

LYPD3 Recombinant Matched Antibody Pair, PBS Only

Catalog Number: **MP00387-3**

Capture Antibody Information

Catalog Number:

83345-1-PBS

Host:

Rabbit

Isotype:

IgG

Purification Method:

Protein A purification

Clone ID:

240347C5

Reactivity:

Human

Immunogen Catalog Number:

Ag34961

Conjugate:

Unconjugated

Full name:

LY6/PLAUR domain containing 3

Gene ID:

27076

Detection Antibody Information

Catalog Number:

83345-3-PBS

Host:

Rabbit

Isotype:

IgG

Purification Method:

Protein A purification

Clone ID:

240347D8

Reactivity:

Human

GenBank:

NM_014400

Immunogen Catalog Number:

Ag34961

Conjugate:

Unconjugated

Full name:

LY6/PLAUR domain containing 3

Gene ID:

27076

Applications

Tested Applications:

Cytometric bead array

Range:

0.156-20 ng/mL (Cytometric Bead Array)

Recommended Dilutions:

It is recommended that this reagent should be titrated in each testing system to obtain optimal results.

Product Information

MP00387-3 targets LYPD3 in immunoassays as a matched antibody pair. Validated in Cytometric bead array.

Capture antibody: LYPD3 Recombinant antibody, PBS Only (Capture) 83345-1-PBS (240347C5). 100 µg. Concentration 1 mg/mL.

Detection antibody: LYPD3 Recombinant antibody, PBS Only (Capture/Detector) 83345-3-PBS (240347D8). 100 µg. Concentration 1 mg/mL.

Alternative LYPD3 matched antibody pairs: MP00387-1, MP00387-2

Unconjugated rabbit recombinant monoclonal antibody pair in PBS only storage buffer at a concentration of 1 mg/mL, ready for conjugation. Created using Proteintech's proprietary in-house recombinant technology. Recombinant production enables unrivalled batch-to-batch consistency, easy scale-up, and future security of supply.

Matched antibody pairs are designed for use in a variety of assays and platforms that require matched antibody pairs.

Antibody use should be optimized for each application and assay.

Storage

Storage:

Store at -80°C.

Storage buffer:

PBS only

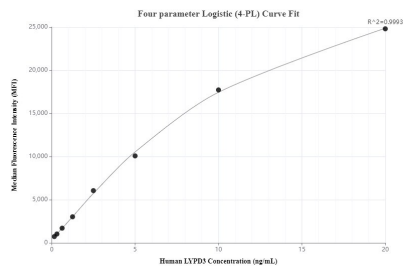
For technical support and original validation data for this product please contact:

T: 1 (888) 4PTGLAB (1-888-478-4522) (toll free in USA), or 1(312) 455-8498 (outside USA)

E: proteintech@ptglab.com
W: ptglab.com

This product is exclusively available under Proteintech Group brand and is not available to purchase from any other manufacturer.

Selected Validation Data



Cytometric bead array standard curve of MP00387-3, LYPD3 Recombinant Matched Antibody Pair, PBS Only. Capture antibody: 83345-1-PBS. Detection antibody: 83345-3-PBS. Standard: Ag34961. Range: 0.156-20 ng/mL