

For Research Use Only

NCAM1/CD56 Recombinant Matched Antibody Pair, PBS Only



Catalog Number:MP00393-4

Capture Antibody Information

Catalog Number:
83365-5-PBS
Host:
Rabbit
Isotype:
IgG
Purification Method:
Protein A purification

Clone ID:
240078A7
Reactivity:
human

Conjugate:
Unconjugated
Full name:
neural cell adhesion molecule 1
Gene ID:
4684

Detection Antibody Information

Catalog Number:
83365-4-PBS
Host:
Rabbit
Isotype:
IgG
Purification Method:
Protein A purification

Clone ID:
240078H1
Reactivity:
human
GenBank:
BC047244

Conjugate:
Unconjugated
Full name:
neural cell adhesion molecule 1
Gene ID:
4684

Applications

Tested Applications:
Sandwich ELISA

Range:
0.156-10 ng/mL (Sandwich ELISA)

Recommended Dilutions:
It is recommended that this reagent should be titrated in each testing system to obtain optimal results.

Product Information

MP00393-4 targets NCAM1/CD56 in immunoassays as a matched antibody pair. Validated in Sandwich ELISA.

Capture antibody: NCAM1/CD56 Recombinant antibody, PBS Only (Capture) 83365-5-PBS (240078A7). 100 µg. Concentration 1 mg/mL.

Detection antibody: NCAM1/CD56 Recombinant antibody, PBS Only (Capture/Detector) 83365-4-PBS (240078H1). 100 µg. Concentration 1 mg/mL.

Unconjugated rabbit recombinant monoclonal antibody pair in PBS only storage buffer at a concentration of 1 mg/mL, ready for conjugation. Created using Proteintech's proprietary in-house recombinant technology. Recombinant production enables unrivalled batch-to-batch consistency, easy scale-up, and future security of supply.

Matched antibody pairs are designed for use in a variety of assays and platforms that require matched antibody pairs.

Antibody use should be optimized for each application and assay.

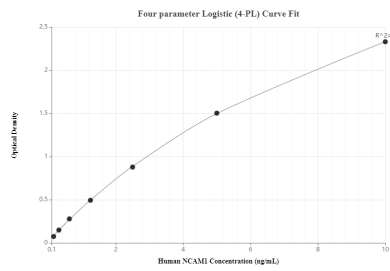
Storage

Storage:
Store at -80°C.
Storage buffer:
PBS only

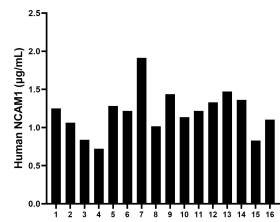
For technical support and original validation data for this product please contact:
T: 1 (888) 4PTGLAB (1-888-478-4522) (toll free in USA), or 1(312) 455-8498 (outside USA)
E: proteintech@ptglab.com
W: ptglab.com

This product is exclusively available under Proteintech Group brand and is not available to purchase from any other manufacturer.

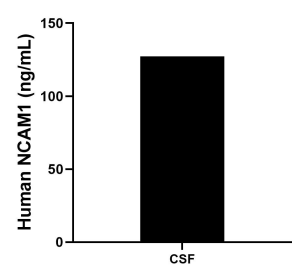
Selected Validation Data



Sandwich ELISA standard curve of MP00393-4, Human NCAM1/CD56 Monoclonal Matched Antibody Pair - PBS only. 83365-5-PBS was coated to a plate as the capture antibody and incubated with serial dilutions of standard Eg31816. 83365-4-PBS was HRP conjugated as the detection antibody. Range: 0.156-10 ng/mL



Serum of sixteen individual healthy human donors were measured. The NCAM1/CD56 concentration of detected samples was determined to be 1.2 ug/mL with a range of 0.7 - 1.9 ug/mL



The NCAM1/CD56 concentration of Human cerebrospinal fluid (CSF) samples were determined to be 127.3 ng/mL