

# C13orf18 Recombinant Matched Antibody Pair, PBS Only

Catalog Number: **MP00398-2**

## Capture Antibody Information

**Catalog Number:**  
83411-2-PBS  
**Host:**  
Rabbit  
**Isotype:**  
IgG  
**Purification Method:**  
Protein A purification

**Clone ID:**  
240259G4  
**Reactivity:**  
human  
**Immunogen Catalog Number:**  
Ag15474

**Conjugate:**  
Unconjugated  
**Full name:**  
chromosome 13 open reading frame 18  
**Gene ID:**  
80183

## Detection Antibody Information

**Catalog Number:**  
83411-4-PBS  
**Host:**  
Rabbit  
**Isotype:**  
IgG  
**Purification Method:**  
Protein A purification

**Clone ID:**  
240259C6  
**Reactivity:**  
human  
**GenBank:**  
BC032311  
**Immunogen Catalog Number:**  
Ag15474

**Conjugate:**  
Unconjugated  
**Full name:**  
chromosome 13 open reading frame 18  
**Gene ID:**  
80183

## Applications

**Tested Applications:**  
Cytometric bead array

**Range:**  
0.625-40 ng/mL (Cytometric Bead Array)

**Recommended Dilutions:**  
It is recommended that this reagent should be titrated in each testing system to obtain optimal results.

## Product Information

MP00398-2 targets C13orf18 in immunoassays as a matched antibody pair. Validated in Cytometric bead array.

Capture antibody: C13orf18 Recombinant antibody, PBS Only (Capture) 83411-2-PBS (240259G4). 100 µg. Concentration 1 mg/mL.

Detection antibody: C13orf18 Recombinant antibody, PBS Only (Detector) 83411-4-PBS (240259C6). 100 µg. Concentration 1 mg/mL.

Unconjugated rabbit recombinant monoclonal antibody pair in PBS only storage buffer at a concentration of 1 mg/mL, ready for conjugation. Created using Proteintech's proprietary in-house recombinant technology. Recombinant production enables unrivalled batch-to-batch consistency, easy scale-up, and future security of supply.

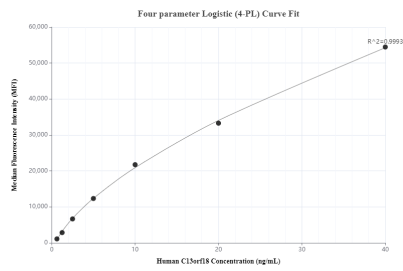
Matched antibody pairs are designed for use in a variety of assays and platforms that require matched antibody pairs.

Antibody use should be optimized for each application and assay.

## Storage

**Storage:**  
Store at -80°C.  
**Storage buffer:**  
PBS only

# Selected Validation Data



Cytometric bead array standard curve of MP00398-2, C13orf18 Recombinant Matched Antibody Pair, PBS Only. Capture antibody: 83411-2-PBS. Detection antibody: 83411-4-PBS. Standard: Ag15474. Range: 0.625-40 ng/mL.