

Mouse Osteopontin Recombinant Matched Antibody Pair, PBS Only

Catalog Number: **MP00400-2**

Capture Antibody Information

Catalog Number:
83413-5-PBS
Host:
Rabbit
Isotype:
IgG
Purification Method:
Protein A purification

Clone ID:
240250H3
Reactivity:
mouse

Conjugate:
Unconjugated
Full name:
secreted phosphoprotein 1
Gene ID:
20750

Detection Antibody Information

Catalog Number:
83413-4-PBS
Host:
Rabbit
Isotype:
IgG
Purification Method:
Protein A purification

Clone ID:
240250F11
Reactivity:
mouse
GenBank:
NM_001204233.1

Conjugate:
Unconjugated
Full name:
secreted phosphoprotein 1
Gene ID:
20750

Applications

Tested Applications:
Cytometric bead array, Sandwich ELISA

Range:
0.313-40 ng/mL (Cytometric Bead Array)
78.1-5000 pg/mL (Sandwich ELISA)

Recommended Dilutions:
It is recommended that this reagent should be titrated in each testing system to obtain optimal results.

Product Information

MP00400-2 targets Osteopontin in immunoassays as a matched antibody pair. Validated in Cytometric bead array, Sandwich ELISA.

Capture antibody: Mouse Osteopontin Recombinant antibody, PBS Only (Capture/Detector) 83413-5-PBS (240250H3). 100 µg. Concentration 1 mg/mL.

Detection antibody: Mouse Osteopontin Recombinant antibody, PBS Only (Detector) 83413-4-PBS (240250F11). 100 µg. Concentration 1 mg/mL.

Unconjugated rabbit recombinant monoclonal antibody pair in PBS only storage buffer at a concentration of 1 mg/mL, ready for conjugation. Created using Proteintech's proprietary in-house recombinant technology. Recombinant production enables unrivalled batch-to-batch consistency, easy scale-up, and future security of supply.

Matched antibody pairs are designed for use in a variety of assays and platforms that require matched antibody pairs.

Antibody use should be optimized for each application and assay.

Storage

Storage:
Store at -80°C.
Storage buffer:
PBS only

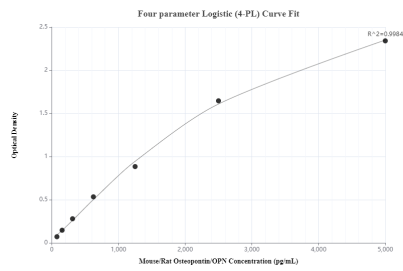
For technical support and original validation data for this product please contact:

T: 1 (888) 4PTGLAB (1-888-478-4522) (toll free in USA), or 1(312) 455-8498 (outside USA)

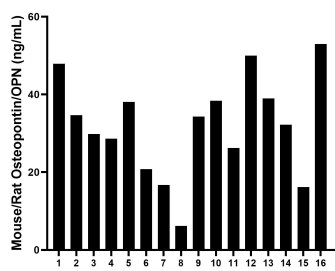
E: proteintech@ptglab.com
W: ptglab.com

This product is exclusively available under Proteintech Group brand and is not available to purchase from any other manufacturer.

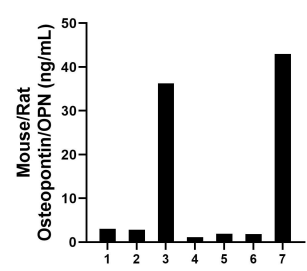
Selected Validation Data



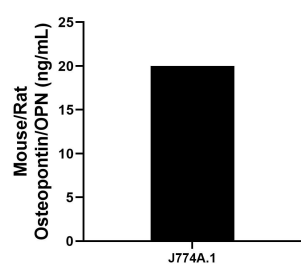
Sandwich ELISA standard curve of MP00400-2, mouse/rat Osteopontin Recombinant Matched Antibody Pair - PBS only. 83413-5-PBS was coated to a plate as the capture antibody and incubated with serial dilutions of standard Eg0317. 83413-4-PBS was HRP conjugated as the detection antibody. Range: 78.1-5000 pg/mL



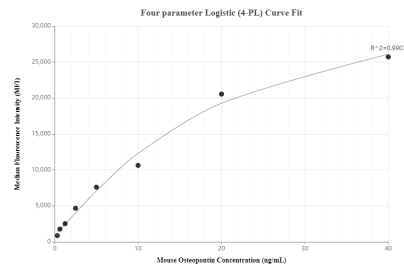
Serum of sixteen mice was measured. The Osteopontin concentration of detected samples was determined to be 32.0 ng/mL with a range of 6.2 - 53.0 ng/mL.



Serum of seven rats was measured. The Osteopontin concentration of detected samples was determined to be 12.8 ng/mL with a range of 1.1 - 43.0 ng/mL.



J774A.1 mouse reticulum cell sarcoma macrophage cells were cultured in DMEM supplemented with 10% fetal bovine serum, 2.5 mM L-glutamine, 100 U/mL penicillin and 100 µg/mL streptomycin sulfate. An aliquot of the cell culture supernatant was removed, assayed for mouse/rat Osteopontin and measured 20.0 ng/mL



Cytometric bead array standard curve of MP00400-2, MOUSE Osteopontin Recombinant Matched Antibody Pair, PBS Only. Capture antibody: 83413-5-PBS. Detection antibody: 83413-4-PBS. Standard: Eg0317. Range: 0.313-40 ng/mL