

# PINK1 Recombinant Matched Antibody Pair, PBS Only

Catalog Number: **MP00404-1**

## Capture Antibody Information

**Catalog Number:**

81991-2-PBS

**Host:**

Rabbit

**Isotype:**

IgG

**Purification Method:**

Protein A purification

**Clone ID:**

240449A2

**Reactivity:**

human

**Immunogen Catalog Number:**

Ag19825

**Conjugate:**

Unconjugated

**Full name:**

PTEN induced putative kinase 1

**Gene ID:**

65018

## Detection Antibody Information

**Catalog Number:**

81991-5-PBS

**Host:**

Rabbit

**Isotype:**

IgG

**Purification Method:**

Protein A purification

**Clone ID:**

240449G8

**Reactivity:**

human

**GenBank:**

BC028215

**Immunogen Catalog Number:**

Ag19825

**Conjugate:**

Unconjugated

**Full name:**

PTEN induced putative kinase 1

**Gene ID:**

65018

## Applications

**Tested Applications:**

Cytometric bead array, Sandwich ELISA

**Range:**

0.78-100 ng/mL (Cytometric Bead Array)  
0.156-10 ng/mL (Sandwich ELISA)

**Recommended Dilutions:**

It is recommended that this reagent should be titrated in each testing system to obtain optimal results.

## Product Information

MP00404-1 targets PINK1 in immunoassays as a matched antibody pair. Validated in Cytometric bead array, Sandwich ELISA.

Capture antibody: PINK1 Recombinant antibody, PBS Only (Capture/Detector) 81991-2-PBS (240449A2). 100 µg. Concentration 1 mg/mL.

Detection antibody: PINK1 Recombinant antibody, PBS Only (Capture/Detector) 81991-5-PBS (240449G8). 100 µg. Concentration 1 mg/mL.

Alternative PINK1 matched antibody pairs: MP00404-2, MP00404-3, MP50236-1, MP50236-2

Unconjugated rabbit recombinant monoclonal antibody pair in PBS only storage buffer at a concentration of 1 mg/mL, ready for conjugation. Created using Proteintech's proprietary in-house recombinant technology. Recombinant production enables unrivalled batch-to-batch consistency, easy scale-up, and future security of supply.

Matched antibody pairs are designed for use in a variety of assays and platforms that require matched antibody pairs.

Antibody use should be optimized for each application and assay.

## Storage

**Storage:**

Store at -80°C.

**Storage buffer:**

PBS only

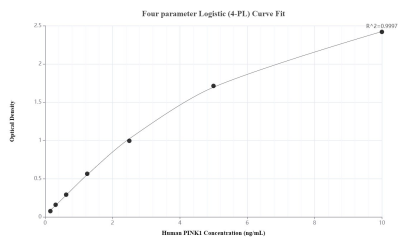
For technical support and original validation data for this product please contact:

T: 1 (888) 4PTGLAB (1-888-478-4522) (toll free in USA), or 1(312) 455-8498 (outside USA)

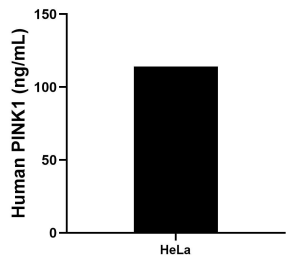
E: [proteintech@ptglab.com](mailto:proteintech@ptglab.com)  
W: [ptglab.com](http://ptglab.com)

**This product is exclusively available under Proteintech Group brand and is not available to purchase from any other manufacturer.**

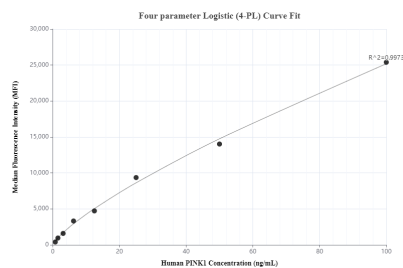
## Selected Validation Data



Sandwich ELISA standard curve of MP00404-1, Human PINK1 Recombinant Matched Antibody Pair - PBS only. 81991-2-PBS was coated to a plate as the capture antibody and incubated with serial dilutions of standard Ag19825. 81991-5-PBS was HRP conjugated as the detection antibody. Range: 0.156-10 ng/mL



The mean PINK1 concentration was determined to be 114.07 ng/mL in HeLa cell extract based on a 2.00 mg/mL extract load.



Cytometric bead array standard curve of MP00404-1, PINK1 Recombinant Matched Antibody Pair, PBS Only. Capture antibody: 81991-2-PBS. Detection antibody: 81991-5-PBS. Standard: Ag19825. Range: 0.78-100 ng/mL