

Lactotransferrin/LTF Recombinant Matched Antibody Pair, PBS Only

Catalog Number: **MP00429-1**

Capture Antibody Information

Catalog Number:
83409-4-PBS
Host:
Rabbit
Isotype:
IgG
Purification Method:
Protein A purification

Clone ID:
240280H3
Reactivity:
human

Conjugate:
Unconjugated
Full name:
Lactotransferrin
Gene ID:
4057

Detection Antibody Information

Catalog Number:
83409-1-PBS
Host:
Rabbit
Isotype:
IgG
Purification Method:
Protein A purification

Clone ID:
240280A9
Reactivity:
human
GenBank:
NM_002343.6

Conjugate:
Unconjugated
Full name:
Lactotransferrin
Gene ID:
4057

Applications

Tested Applications:
Cytometric bead array, Sandwich ELISA

Range:
0.625-80 ng/mL (Cytometric Bead Array)
15.6-1000 pg/mL (Sandwich ELISA)

Recommended Dilutions:
It is recommended that this reagent should be titrated in each testing system to obtain optimal results.

Product Information

MP00429-1 targets Lactotransferrin/LTF in immunoassays as a matched antibody pair. Validated in Cytometric bead array, Sandwich ELISA.

Capture antibody: Lactotransferrin/LTF Recombinant antibody, PBS Only (Capture) 83409-4-PBS (240280H3). 100 µg. Concentration 1 mg/mL.

Detection antibody: Lactotransferrin/LTF Recombinant antibody, PBS Only (Detector) 83409-1-PBS (240280A9). 100 µg. Concentration 1 mg/mL.

Alternative Lactotransferrin/LTF matched antibody pairs: MP00429-2, MP00429-3

Unconjugated rabbit recombinant monoclonal antibody pair in PBS only storage buffer at a concentration of 1 mg/mL, ready for conjugation. Created using Proteintech's proprietary in-house recombinant technology. Recombinant production enables unrivalled batch-to-batch consistency, easy scale-up, and future security of supply.

Matched antibody pairs are designed for use in a variety of assays and platforms that require matched antibody pairs.

Antibody use should be optimized for each application and assay.

Storage

Storage:
Store at -80°C.
Storage buffer:
PBS only

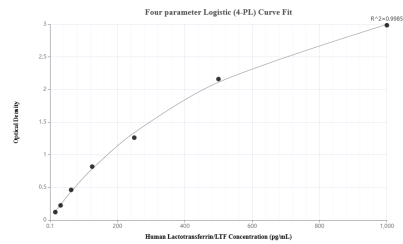
For technical support and original validation data for this product please contact:

T: 1 (888) 4PTGLAB (1-888-478-4522) (toll free in USA), or 1(312) 455-8498 (outside USA)

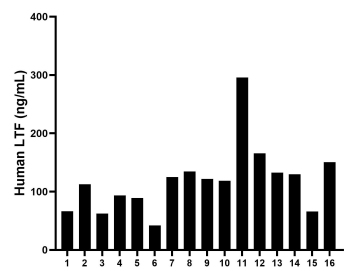
E: proteintech@ptglab.com
W: ptglab.com

This product is exclusively available under Proteintech Group brand and is not available to purchase from any other manufacturer.

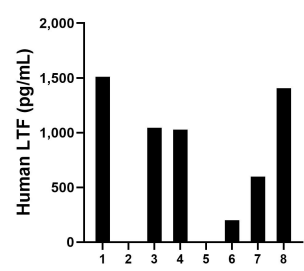
Selected Validation Data



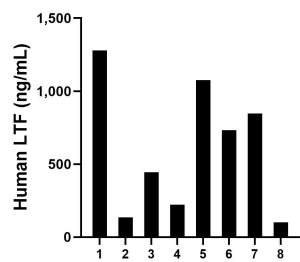
Sandwich ELISA standard curve of MP00429-1, Human Lactotransferrin/LTF Recombinant Matched Antibody Pair - PBS only. 83409-4-PBS was coated to a plate as the capture antibody and incubated with serial dilutions of standard Eg0888. 83409-1-PBS was HRP conjugated as the detection antibody. Range: 15.6-1000 pg/mL



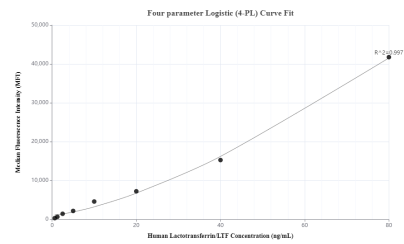
Serum of sixteen humans was measured. The Lactotransferrin/LTF concentration of these samples was determined to be 119.112 ng/mL, with a range of 42.104 - 295.911 pg/mL.



Urine of eight humans was measured. The Lactotransferrin/LTF concentration of these samples was determined to be 964.611 pg/mL, with a range of 201.321 - 1,510.588. pg/mL



Saliva of eight humans was measured. The Lactotransferrin/LTF concentration of these samples was determined to be 604.833 ng/mL, with a range of 101.828 - 1,277.928 pg/mL



Cytometric bead array standard curve of MP00429-1, Lactotransferrin/LTF Recombinant Matched Antibody Pair, PBS Only. Capture antibody: 83409-4-PBS. Detection antibody: 83409-1-PBS. Standard: Eg0888. Range: 0.625-80 ng/mL