

For Research Use Only



SLCO1A2 Recombinant Matched Antibody Pair, PBS Only

Catalog Number:MP00452-3

Capture Antibody Information

Catalog Number:
83446-2-PBS
Host:
Rabbit
Isotype:
IgG
Purification Method:
Protein A purification

Clone ID:
240484F11
Reactivity:
Human
Immunogen Catalog Number:
Ag34497

Conjugate:
Unconjugated
Full name:
solute carrier organic anion transporter family, member 1A2
Gene ID:
6579

Detection Antibody Information

Catalog Number:
83446-1-PBS
Host:
Rabbit
Isotype:
IgG
Purification Method:
Protein A purification

Clone ID:
240484B11
Reactivity:
Human
GenBank:
NM_021094
Immunogen Catalog Number:
Ag34497

Conjugate:
Unconjugated
Full name:
solute carrier organic anion transporter family, member 1A2
Gene ID:
6579

Applications

Tested Applications:
Cytometric bead array

Range:
0.625-80 ng/mL (Cytometric Bead Array)

Recommended Dilutions:
It is recommended that this reagent should be titrated in each testing system to obtain optimal results.

Product Information

MP00452-3 targets SLCO1A2 in immunoassays as a matched antibody pair. Validated in Cytometric bead array.

Capture antibody: SLCO1A2 Recombinant antibody, PBS Only (Capture/Detector) 83446-2-PBS (240484F11). 100 µg. Concentration 1 mg/mL.

Detection antibody: SLCO1A2 Recombinant antibody, PBS Only (Capture/Detector) 83446-1-PBS (240484B11). 100 µg. Concentration 1 mg/mL.

Alternative SLCO1A2 matched antibody pairs: MP00452-1, MP00452-2

Unconjugated rabbit recombinant monoclonal antibody pair in PBS only storage buffer at a concentration of 1 mg/mL, ready for conjugation. Created using Proteintech's proprietary in-house recombinant technology. Recombinant production enables unrivalled batch-to-batch consistency, easy scale-up, and future security of supply.

Matched antibody pairs are designed for use in a variety of assays and platforms that require matched antibody pairs.

Antibody use should be optimized for each application and assay.

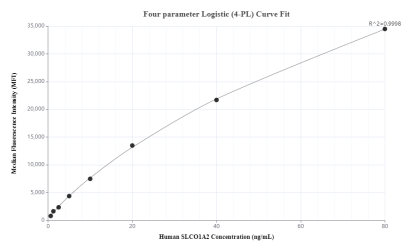
Storage

Storage:
Store at -80°C.
Storage buffer:
PBS only

For technical support and original validation data for this product please contact:
T: 1 (888) 4PTGLAB (1-888-478-4522) (toll free in USA), or 1(312) 455-8498 (outside USA)
E: proteintech@ptglab.com
W: ptglab.com

This product is exclusively available under Proteintech Group brand and is not available to purchase from any other manufacturer.

Selected Validation Data



Cytometric bead array standard curve of MP00452-3, SLCO1A2 Recombinant Matched Antibody Pair, PBS Only. Capture antibody: 83446-2-PBS. Detection antibody: 83446-1-PBS. Standard: Ag34497. Range: 0.625-80 ng/mL.