

For Research Use Only

GSDME Recombinant Matched Antibody Pair, PBS Only

Catalog Number: **MP00455-2**

Capture Antibody Information

Catalog Number:

83454-1-PBS

Host:

Rabbit

Isotype:

IgG

Purification Method:

Protein A purification

Clone ID:

240394B3

Reactivity:

human

Immunogen Catalog Number:

Ag3746

Conjugate:

Unconjugated

Full name:

deafness, autosomal dominant 5

Gene ID:

1687

Detection Antibody Information

Catalog Number:

83454-4-PBS

Host:

Rabbit

Isotype:

IgG

Purification Method:

Protein A purification

Clone ID:

240394E11

Reactivity:

human

GenBank:

BC019689

Immunogen Catalog Number:

Ag3746

Conjugate:

Unconjugated

Full name:

deafness, autosomal dominant 5

Gene ID:

1687

Applications

Tested Applications:

Cytometric bead array, Sandwich ELISA

Range:

0.78-100 ng/mL (Cytometric Bead Array)
1.88-120 ng/mL (Sandwich ELISA)

Recommended Dilutions:

It is recommended that this reagent should be titrated in each testing system to obtain optimal results.

Product Information

MP00455-2 targets GSDME in immunoassays as a matched antibody pair. Validated in Cytometric bead array, Sandwich ELISA.

Capture antibody: GSDME Recombinant antibody, PBS Only (Capture) 83454-1-PBS (240394B3). 100 µg. Concentration 1 mg/mL.

Detection antibody: GSDME Recombinant antibody, PBS Only (Detector) 83454-4-PBS (240394E11). 100 µg. Concentration 1 mg/mL.

Unconjugated rabbit recombinant monoclonal antibody pair in PBS only storage buffer at a concentration of 1 mg/mL, ready for conjugation. Created using Proteintech's proprietary in-house recombinant technology. Recombinant production enables unrivalled batch-to-batch consistency, easy scale-up, and future security of supply.

Matched antibody pairs are designed for use in a variety of assays and platforms that require matched antibody pairs.

Antibody use should be optimized for each application and assay.

Storage

Storage:

Store at -80°C.

Storage buffer:

PBS only

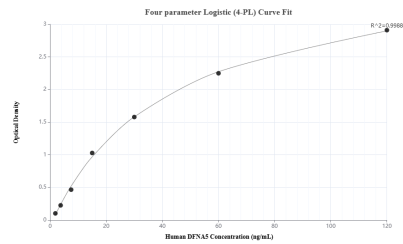
For technical support and original validation data for this product please contact:

T: 1 (888) 4PTGLAB (1-888-478-4522) (toll free in USA), or 1(312) 455-8498 (outside USA)

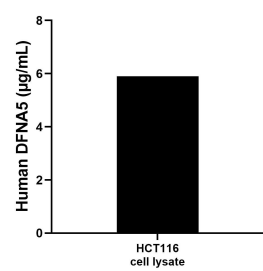
E: proteintech@ptglab.com
W: ptglab.com

This product is exclusively available under Proteintech Group brand and is not available to purchase from any other manufacturer.

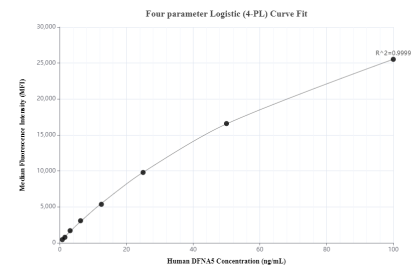
Selected Validation Data



Sandwich ELISA standard curve of MP00455-2, Human DFNA5 Recombinant Matched Antibody Pair - PBS only. 83454-1-PBS was coated to a plate as the capture antibody and incubated with serial dilutions of standard Ag3746. 83454-4-PBS was HRP conjugated as the detection antibody. Range: 1.88-120 ng/mL



HCT116 cell lysate was measured. The human DFNA5 concentration of detected samples was determined to be 5.90 µg/mL (based on a 4.3 mg/mL extract load).



Cytometric bead array standard curve of MP00455-2, DFNA5 Recombinant Matched Antibody Pair, PBS Only. Capture antibody: 83454-1-PBS. Detection antibody: 83454-4-PBS. Standard: Ag3746. Range: 0.78-100 ng/mL