

HSPA2 Recombinant Matched Antibody Pair, PBS Only

Catalog Number: MP00465-1

Capture Antibody Information

Catalog Number:
83466-1-PBS

Host:
Rabbit

Isotype:
IgG

Purification Method:
Protein A purification

Clone ID:
240421A2

Reactivity:
human, mouse

Immunogen Catalog Number:
Ag3539

Conjugate:
Unconjugated

Full name:
heat shock 70kDa protein 2

Gene ID:
3306

Detection Antibody Information

Catalog Number:
83466-3-PBS

Host:
Rabbit

Isotype:
IgG

Purification Method:
Protein A purification

Clone ID:
240421A4

Reactivity:
human

GenBank:
BC036107

Immunogen Catalog Number:
Ag3539

Conjugate:
Unconjugated

Full name:
heat shock 70kDa protein 2

Gene ID:
3306

Applications

Tested Applications:

Cytometric bead array, Sandwich
ELISA

Range:

0.625-80 ng/mL (Cytometric Bead
Array)
78.1-5000 pg/mL (Sandwich ELISA)

Recommended Dilutions:

It is recommended that this reagent
should be titrated in each testing
system to obtain optimal results.

Product Information

MP00465-1 targets HSPA2 in immunoassays as a matched antibody pair. Validated in Cytometric bead array, Sandwich ELISA.

Capture antibody: HSPA2 Recombinant antibody, PBS Only (Capture) 83466-1-PBS (240421A2). 100 µg.
Concentration 1 mg/mL.

Detection antibody: HSPA2 Recombinant antibody, PBS Only (Capture/Detector) 83466-3-PBS (240421A4). 100 µg.
Concentration 1 mg/mL.

Alternative HSPA2 matched antibody pairs: MP00465-2, MP00465-3

Unconjugated rabbit recombinant monoclonal antibody pair in PBS only storage buffer at a concentration of 1 mg/mL, ready for conjugation. Created using Proteintech's proprietary in-house recombinant technology. Recombinant production enables unrivalled batch-to-batch consistency, easy scale-up, and future security of supply.

Matched antibody pairs are designed for use in a variety of assays and platforms that require matched antibody pairs.

Antibody use should be optimized for each application and assay.

Storage

Storage:

Store at -80°C.

Storage buffer:
PBS only

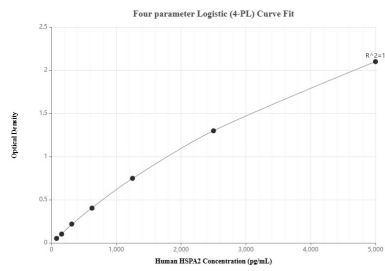
For technical support and original validation data for this product please contact:

T: 1 (888) 4PTGLAB (1-888-478-4522) (toll free
in USA), or 1(312) 455-8498 (outside USA)

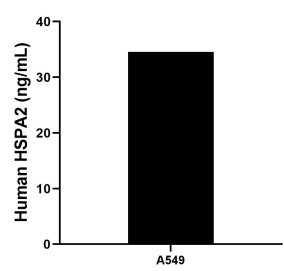
E: proteintech@ptglab.com
W: ptglab.com

This product is exclusively available under Proteintech Group brand and is not available to purchase from any other manufacturer.

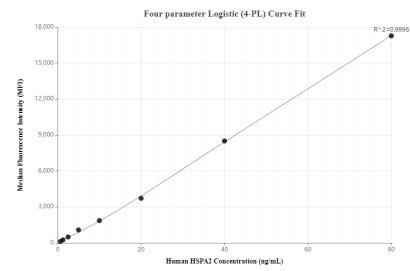
Selected Validation Data



Sandwich ELISA standard curve of MP00465-1, Human HSPA2 Recombinant Matched Antibody Pair - PBS only. 83466-1-PBS was coated to a plate as the capture antibody and incubated with serial dilutions of standard Ag3539. 83466-3-PBS was HRP conjugated as the detection antibody. Range: 78.1-5000 pg/mL



The mean HSPA2 concentration was determined to be 34.57 ng/mL in A549 cell extract based on a 2.5 mg/mL extract load.



Cytometric bead array standard curve of MP00465-1, HSPA2 Recombinant Matched Antibody Pair, PBS Only. Capture antibody: 83466-1-PBS. Detection antibody: 83466-3-PBS. Standard: Ag3539. Range: 0.625-80 ng/mL