

MDC1 Recombinant Matched Antibody Pair, PBS Only

Catalog Number: MP00487-1

Capture Antibody Information

Catalog Number:
83496-5-PBS
Host:
Rabbit
Isotype:
IgG
Purification Method:
Protein A purification

Clone ID:
240469G11
Reactivity:
human
Immunogen Catalog Number:
Ag20135

Conjugate:
Unconjugated
Full name:
mediator of DNA damage checkpoint 1
Gene ID:
9656

Detection Antibody Information

Catalog Number:
83496-1-PBS
Host:
Rabbit
Isotype:
IgG
Purification Method:
Protein A purification

Clone ID:
240469D5
Reactivity:
human
GenBank:
BC152556
Immunogen Catalog Number:
Ag20135

Conjugate:
Unconjugated
Full name:
mediator of DNA damage checkpoint 1
Gene ID:
9656

Applications

Tested Applications:
Cytometric bead array, Sandwich ELISA

Range:
0.313-40 ng/mL (Cytometric Bead Array)
39.06-2500 pg/mL (Sandwich ELISA)

Recommended Dilutions:
It is recommended that this reagent should be titrated in each testing system to obtain optimal results.

Product Information

MP00487-1 targets MDC1 in immunoassays as a matched antibody pair. Validated in Cytometric bead array, Sandwich ELISA.

Capture antibody: MDC1 Recombinant antibody, PBS Only (Capture) 83496-5-PBS (240469G11). 100 µg. Concentration 1 mg/mL.

Detection antibody: MDC1 Recombinant antibody, PBS Only (Detector) 83496-1-PBS (240469D5). 100 µg. Concentration 1 mg/mL.

Alternative MDC1 matched antibody pairs: MP00487-2, MP00487-3

Unconjugated rabbit recombinant monoclonal antibody pair in PBS only storage buffer at a concentration of 1 mg/mL, ready for conjugation. Created using Proteintech's proprietary in-house recombinant technology. Recombinant production enables unrivalled batch-to-batch consistency, easy scale-up, and future security of supply.

Matched antibody pairs are designed for use in a variety of assays and platforms that require matched antibody pairs.

Antibody use should be optimized for each application and assay.

Storage

Storage:
Store at -80°C.
Storage buffer:
PBS only

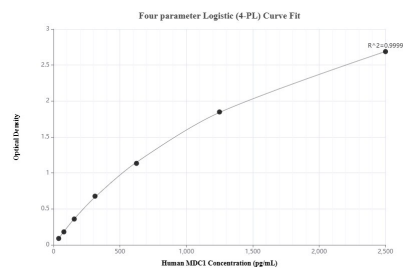
For technical support and original validation data for this product please contact:

T: 1 (888) 4PTGLAB (1-888-478-4522) (toll free in USA), or 1(312) 455-8498 (outside USA)

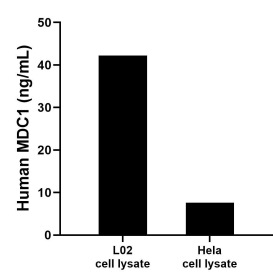
E: proteintech@ptglab.com
W: ptglab.com

This product is exclusively available under Proteintech Group brand and is not available to purchase from any other manufacturer.

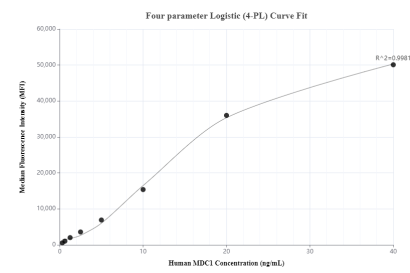
Selected Validation Data



Sandwich ELISA standard curve of MP00487-1, Human MDC1 Recombinant Matched Antibody Pair - PBS only. 83496-5-PBS was coated to a plate as the capture antibody and incubated with serial dilutions of standard Ag20135. 83496-1-PBS was HRP conjugated as the detection antibody. Range: 39.06-2500 pg/mL



L02 and HeLa cell lysate were measured. The human MDC1 concentration of detected samples was determined to be 42.2 ng/mL (based on a 2.6 mg/mL extract load) in L02 cell lysate and 7.6 ng/mL (based on a 1.2 mg/mL extract load) in HeLa cell lysate.



Cytometric bead array standard curve of MP00487-1, MDC1 Recombinant Matched Antibody Pair, PBS Only. Capture antibody: 83496-5-PBS. Detection antibody: 83496-1-PBS. Standard: Ag20135. Range: 0.313-40 ng/mL