

NELF Recombinant Matched Antibody Pair, PBS Only

Catalog Number: **MP00490-1**

Capture Antibody Information

Catalog Number:
83490-1-PBS

Host:
Rabbit

Isotype:
IgG

Purification Method:
Protein A purification

Clone ID:
240482C5

Reactivity:
human

Immunogen Catalog Number:
Ag34902

Conjugate:
Unconjugated

Full name:
nasal embryonic LHRH factor

Gene ID:
26012

Detection Antibody Information

Catalog Number:
83490-2-PBS

Host:
Rabbit

Isotype:
IgG

Purification Method:
Protein A purification

Clone ID:
240482G1

Reactivity:
human

GenBank:
BC016862

Immunogen Catalog Number:
Ag34902

Conjugate:
Unconjugated

Full name:
nasal embryonic LHRH factor

Gene ID:
26012

Applications

Tested Applications:
Cytometric bead array, Sandwich ELISA

Range:
0.625-80 ng/mL (Cytometric Bead Array)
156-5000 pg/mL (Sandwich ELISA)

Recommended Dilutions:
It is recommended that this reagent should be titrated in each testing system to obtain optimal results.

Product Information

MP00490-1 targets NELF in immunoassays as a matched antibody pair. Validated in Cytometric bead array, Sandwich ELISA.

Capture antibody: NELF Recombinant antibody, PBS Only (Capture) 83490-1-PBS (240482C5). 100 µg. Concentration 1 mg/mL.

Detection antibody: NELF Recombinant antibody, PBS Only (Detector) 83490-2-PBS (240482G1). 100 µg. Concentration 1 mg/mL.

Unconjugated rabbit recombinant monoclonal antibody pair in PBS only storage buffer at a concentration of 1 mg/mL, ready for conjugation. Created using Proteintech's proprietary in-house recombinant technology. Recombinant production enables unrivalled batch-to-batch consistency, easy scale-up, and future security of supply.

Matched antibody pairs are designed for use in a variety of assays and platforms that require matched antibody pairs.

Antibody use should be optimized for each application and assay.

Storage

Storage:
Store at -80°C.

Storage buffer:
PBS only

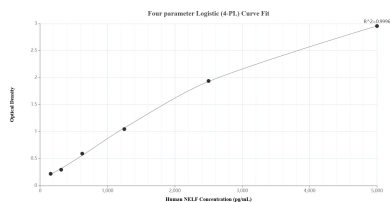
For technical support and original validation data for this product please contact:

T: 1 (888) 4PTGLAB (1-888-478-4522) (toll free in USA), or 1(312) 455-8498 (outside USA)

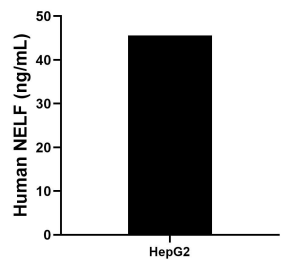
E: proteintech@ptglab.com
W: ptglab.com

This product is exclusively available under Proteintech Group brand and is not available to purchase from any other manufacturer.

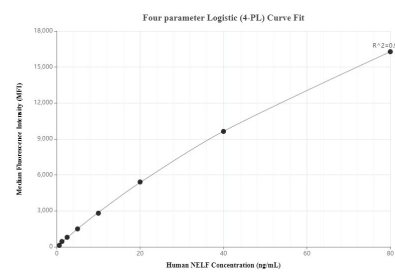
Selected Validation Data



Sandwich ELISA standard curve of MP00490-1, Human NELF Recombinant Matched Antibody Pair - PBS only. 83490-1-PBS was coated to a plate as the capture antibody and incubated with serial dilutions of standard Ag34902. 83490-2-PBS was HRP conjugated as the detection antibody. Range: 156-5000 pg/mL



The mean NELF concentration was determined to be 45.6 ng/mL in HepG2 cell extract based on a 2.3 mg/mL extract load.



Cytometric bead array standard curve of MP00490-1, NELF Recombinant Matched Antibody Pair, PBS Only. Capture antibody: 83490-1-PBS. Detection antibody: 83490-2-PBS. Standard: Ag34902. Range: 0.625-80 ng/mL