

CD4 Recombinant Matched Antibody Pair, PBS Only

Catalog Number: **MP00503-2**

Capture Antibody Information

Catalog Number:
83513-3-PBS

Host:
Rabbit

Isotype:
IgG

Purification Method:
Protein A purification

Clone ID:
240427E10

Reactivity:
human

Conjugate:
Unconjugated

Full name:
CD4 molecule

Gene ID:
920

Detection Antibody Information

Catalog Number:
83513-4-PBS

Host:
Rabbit

Isotype:
IgG

Purification Method:
Protein A purification

Clone ID:
240427B7

Reactivity:
human

GenBank:
BC025782

Conjugate:
Unconjugated

Full name:
CD4 molecule

Gene ID:
920

Applications

Tested Applications:
Cytometric bead array

Range:
0.313-40 ng/mL (Cytometric Bead Array)

Recommended Dilutions:
It is recommended that this reagent should be titrated in each testing system to obtain optimal results.

Product Information

MP00503-2 targets CD4 in immunoassays as a matched antibody pair. Validated in Cytometric bead array.

Capture antibody: CD4 Recombinant antibody, PBS Only (Capture) 83513-3-PBS (240427E10). 100 µg. Concentration 1 mg/mL.

Detection antibody: CD4 Recombinant antibody, PBS Only (Capture/Detector) 83513-4-PBS (240427B7). 100 µg. Concentration 1 mg/mL.

Alternative CD4 matched antibody pairs: MP00503-1, MP00503-3, MP50077-1

Unconjugated rabbit recombinant monoclonal antibody pair in PBS only storage buffer at a concentration of 1 mg/mL, ready for conjugation. Created using Proteintech's proprietary in-house recombinant technology. Recombinant production enables unrivalled batch-to-batch consistency, easy scale-up, and future security of supply.

Matched antibody pairs are designed for use in a variety of assays and platforms that require matched antibody pairs.

Antibody use should be optimized for each application and assay.

Storage

Storage:
Store at -80°C.

Storage buffer:
PBS only

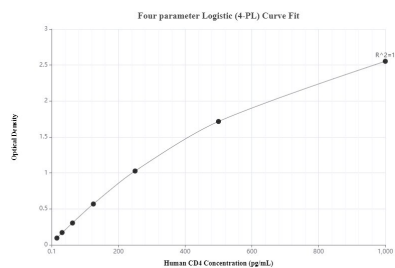
For technical support and original validation data for this product please contact:

T: 1 (888) 4PTGLAB (1-888-478-4522) (toll free in USA), or 1(312) 455-8498 (outside USA)

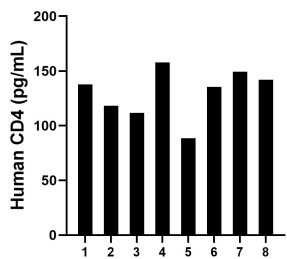
E: proteintech@ptglab.com
W: ptglab.com

This product is exclusively available under Proteintech Group brand and is not available to purchase from any other manufacturer.

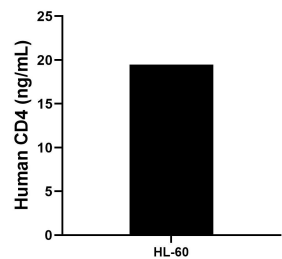
Selected Validation Data



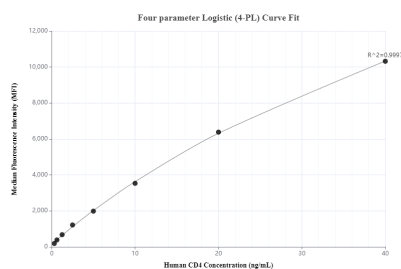
Sandwich ELISA standard curve of MP00503-2, CD4 Recombinant Matched Antibody Pair - PBS only. 83513-3-PBS was coated to a plate as the capture antibody and incubated with serial dilutions of standard Eg0333.83513-4-PBS was HRP conjugated as the detection antibody. Range: 15.6-1000 pg/mL



Serum of eight individual healthy human donors was measured. The CD4 concentration of detected samples was determined to be 130 pg/mL with a range of 88.46 - 157.66 pg/mL.



The mean CD4 concentration was determined to be 14.49 ng/mL in HL-60 cell extract based on a 5.6 mg/mL extract load.



Cytometric bead array standard curve of MP00503-2, CD4 Recombinant Matched Antibody Pair, PBS Only. Capture antibody: 83513-3-PBS. Detection antibody: 83513-4-PBS. Standard: Eg0333. Range: 0.313-40 ng/mL