

For Research Use Only



Integrin Beta 5 Recombinant Matched Antibody Pair, PBS Only

Catalog Number:MP00512-4

Capture Antibody Information

Catalog Number:
83514-3-PBS

Host:
Rabbit

Isotype:
IgG

Purification Method:
Protein A purification

Clone ID:
240401G11

Reactivity:
human

Immunogen Catalog Number:
Ag29783

Conjugate:
Unconjugated

Full name:
integrin, beta 5

Gene ID:
3693

Detection Antibody Information

Catalog Number:
83514-1-PBS

Host:
Rabbit

Isotype:
IgG

Purification Method:
Protein A purification

Clone ID:
240401C12

Reactivity:
human

GenBank:
BC006541

Immunogen Catalog Number:
Ag29783

Conjugate:
Unconjugated

Full name:
integrin, beta 5

Gene ID:
3693

Applications

Tested Applications:
Sandwich ELISA

Range:
9.766-625 pg/mL (Sandwich ELISA)

Recommended Dilutions:
It is recommended that this reagent should be titrated in each testing system to obtain optimal results.

Product Information

MP00512-4 targets Integrin Beta 5 in immunoassays as a matched antibody pair. Validated in Sandwich ELISA.

Capture antibody: Integrin beta-5 Recombinant antibody, PBS Only (Capture/Detector) 83514-3-PBS (240401G11). 100 µg. Concentration 1 mg/ml.

Detection antibody: Integrin beta-5 Recombinant antibody, PBS Only (Detector) 83514-1-PBS (240401C12). 100 µg. Concentration 1 mg/ml.

Unconjugated rabbit recombinant monoclonal antibody pair in PBS only storage buffer at a concentration of 1 mg/mL, ready for conjugation. Created using Proteintech's proprietary in-house recombinant technology. Recombinant production enables unrivalled batch-to-batch consistency, easy scale-up, and future security of supply.

Matched antibody pairs are designed for use in a variety of assays and platforms that require matched antibody pairs.

Antibody use should be optimized for each application and assay.

Storage

Storage:
Store at -80°C.
Storage buffer:
PBS only

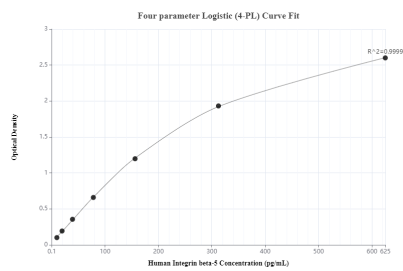
For technical support and original validation data for this product please contact:

T: 1 (888) 4PTGLAB (1-888-478-4522) (toll free in USA), or 1(312) 455-8498 (outside USA)

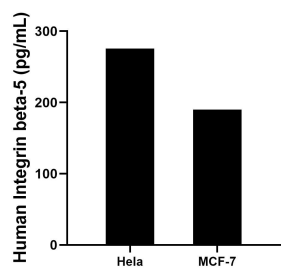
E: proteintech@ptglab.com
W: ptglab.com

This product is exclusively available under Proteintech Group brand and is not available to purchase from any other manufacturer.

Selected Validation Data



Sandwich ELISA standard curve of MP00512-4, Integrin Beta 5 Recombinant Matched Antibody Pair - PBS only. 83514-3-PBS was coated to a plate as the capture antibody and incubated with serial dilutions of standard Ag29783.83514-1-PBS was HRP conjugated as the detection antibody. Range: 9.766-625 pg/mL



The mean Integrin Beta 5 concentration was determined to be 275.71 pg/mL in HeLa cell extract based on a 2.8 mg/mL extract load and 190.06 pg/mL in MCF-7 cell extract based on a 3.1 mg/mL extract load.