

IL-2 Recombinant Matched Antibody Pair, PBS Only

Catalog Number: **MP00545-5**

Capture Antibody Information

Catalog Number:
83558-8-PBS
Host:
Rabbit
Isotype:
IgG
Purification Method:
Protein A purification

Clone ID:
252448A5
Reactivity:
human
Immunogen Catalog Number:
HZ-1015

Conjugate:
Unconjugated
Full name:
interleukin 2
Gene ID:
3558

Detection Antibody Information

Catalog Number:
83558-6-PBS
Host:
Rabbit
Isotype:
IgG
Purification Method:
Protein A purification

Clone ID:
252448F3
Reactivity:
human
GenBank:

Immunogen Catalog Number:
HZ-1015

Conjugate:
Unconjugated
Full name:
interleukin 2
Gene ID:
3558

Applications

Tested Applications:
Sandwich ELISA

Range:
3.91-250 pg/mL (Sandwich ELISA)

Recommended Dilutions:
It is recommended that this reagent should be titrated in each testing system to obtain optimal results.

Product Information

MP00545-5 targets IL-2 in immunoassays as a matched antibody pair. Validated in Sandwich ELISA.

Capture antibody: IL-2 Recombinant monoclonal antibody, PBS Only (Capture) 83558-8-PBS (252448A5). 100 µg. Concentration 1 mg/mL.

Detection antibody: IL-2 Recombinant monoclonal antibody, PBS Only (Detector) 83558-6-PBS (252448F3). 100 µg. Concentration 1 mg/mL.

Unconjugated rabbit recombinant monoclonal antibody pair in PBS only storage buffer at a concentration of 1 mg/mL, ready for conjugation. Created using Proteintech's proprietary in-house recombinant technology. Recombinant production enables unrivalled batch-to-batch consistency, easy scale-up, and future security of supply.

Matched antibody pairs are designed for use in a variety of assays and platforms that require matched antibody pairs.

Antibody use should be optimized for each application and assay.

Storage

Storage:
Store at -80°C.
Storage buffer:
PBS only

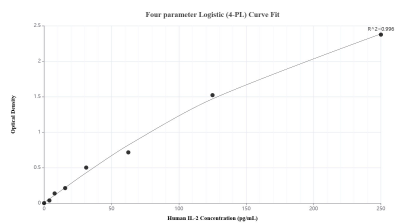
For technical support and original validation data for this product please contact:

T: 1 (888) 4PTGLAB (1-888-478-4522) (toll free in USA), or 1(312) 455-8498 (outside USA)

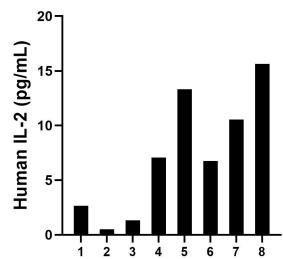
E: proteintech@ptglab.com
W: ptglab.com

This product is exclusively available under Proteintech Group brand and is not available to purchase from any other manufacturer.

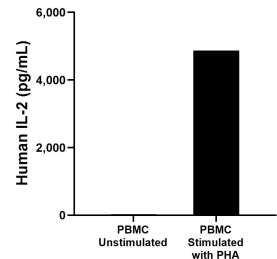
Selected Validation Data



Sandwich ELISA standard curve of MP00545-5, Human IL-2 Recombinant Matched Antibody Pair - PBS only. 83558-8-PBS was coated to a plate as the capture antibody and incubated with serial dilutions of standard HZ-1015. 83558-6-PBS was HRP conjugated as the detection antibody. Range: 3.91-250 pg/mL



Plasma of eight individual healthy human donors was measured. The IL-2 concentration of detected samples was determined to be 7.2 pg/mL with a range of 0.5-15.6 pg/mL.



Human peripheral blood mononuclear cells (PBMC) were cultured unstimulated or stimulated with 10 µg/mL PHA for 3 days. The mean IL-2 concentration was determined to be 28.9 pg/mL in unstimulated PBMC supernatant, 4,872.0 pg/mL in PHA stimulated PBMC supernatant.