

HDAC1 Recombinant Matched Antibody Pair, PBS Only

Catalog Number: **MP00577-1**

Capture Antibody Information

Catalog Number:

83624-2-PBS

Host:

Rabbit

Isotype:

IgG

Purification Method:

Protein A purification

Clone ID:

240614A10

Reactivity:

human

Immunogen Catalog Number:

Ag0256

Conjugate:

Unconjugated

Full name:

histone deacetylase 1

Gene ID:

3065

Detection Antibody Information

Catalog Number:

83624-4-PBS

Host:

Rabbit

Isotype:

IgG

Purification Method:

Protein A purification

Clone ID:

240614G4

Reactivity:

human

GenBank:

BC000301

Immunogen Catalog Number:

Ag0256

Conjugate:

Unconjugated

Full name:

histone deacetylase 1

Gene ID:

3065

Applications

Tested Applications:

Cytometric bead array, Sandwich ELISA

Range:0.625-80 ng/mL (Cytometric Bead Array)
0.313-20 ng/mL (Sandwich ELISA)**Recommended Dilutions:**

It is recommended that this reagent should be titrated in each testing system to obtain optimal results.

Product Information

MP00577-1 targets HDAC1 in immunoassays as a matched antibody pair. Validated in Cytometric bead array, Sandwich ELISA.

Capture antibody: HDAC1 Recombinant antibody, PBS Only (Capture) 83624-2-PBS (240614A10). 100 µg. Concentration 1 mg/mL.

Detection antibody: HDAC1 Recombinant antibody, PBS Only (Detector) 83624-4-PBS (240614G4). 100 µg. Concentration 1 mg/mL.

Alternative HDAC1 matched antibody pairs: MP00577-2, MP00577-3

Unconjugated rabbit recombinant monoclonal antibody pair in PBS only storage buffer at a concentration of 1 mg/mL, ready for conjugation. Created using Proteintech's proprietary in-house recombinant technology. Recombinant production enables unrivalled batch-to-batch consistency, easy scale-up, and future security of supply.

Matched antibody pairs are designed for use in a variety of assays and platforms that require matched antibody pairs.

Antibody use should be optimized for each application and assay.

Storage

Storage:

Store at -80°C.

Storage buffer:

PBS only

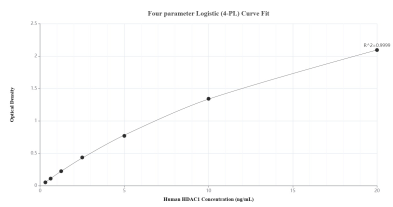
For technical support and original validation data for this product please contact:

T: 1 (888) 4PTGLAB (1-888-478-4522) (toll free in USA), or 1(312) 455-8498 (outside USA)

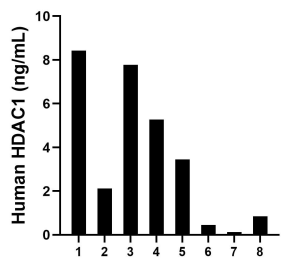
E: proteintech@ptglab.com
W: ptglab.com

This product is exclusively available under Proteintech Group brand and is not available to purchase from any other manufacturer.

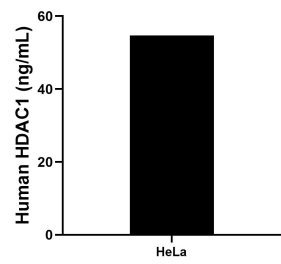
Selected Validation Data



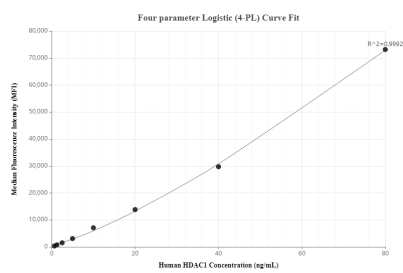
Sandwich ELISA standard curve of MP00577-1, Human HDAC1 Recombinant Matched Antibody Pair - PBS only. 83624-2-PBS was coated to a plate as the capture antibody and incubated with serial dilutions of standard Ag0256. 83624-4-PBS was HRP conjugated as the detection antibody. Range: 0.313-20 ng/mL



Serum of eight individual healthy human donors was measured. The HDAC1 concentration of detected samples was determined to be 3.56 ng/mL with a range of 0.13 - 8.43 ng/mL



The mean HDAC1 concentration was determined to be 54.72 ng/mL in HeLa cell extract based on a 4.30 mg/mL extract load.



Cytometric bead array standard curve of MP00577-1, HDAC1 Recombinant Matched Antibody Pair, PBS Only. Capture antibody: 83624-2-PBS. Detection antibody: 83624-4-PBS. Standard: Ag0256. Range: 0.625-80 ng/mL