

# SLC39A14/ZIP-14 Recombinant Matched Antibody Pair, PBS Only

Catalog Number: **MP00583-3**

## Capture Antibody Information

**Catalog Number:**  
83597-3-PBS  
**Host:**  
Rabbit  
**Isotype:**  
IgG  
**Purification Method:**  
Protein A purification

**Clone ID:**  
240577B3  
**Reactivity:**  
human  
**Immunogen Catalog Number:**  
Ag24210

**Conjugate:**  
Unconjugated  
**Full name:**  
solute carrier family 39 (zinc transporter), member 14  
**Gene ID:**  
23516

## Detection Antibody Information

**Catalog Number:**  
83597-2-PBS  
**Host:**  
Rabbit  
**Isotype:**  
IgG  
**Purification Method:**  
Protein A purification

**Clone ID:**  
240577G11  
**Reactivity:**  
human  
**GenBank:**  
BC015770  
**Immunogen Catalog Number:**  
Ag24210

**Conjugate:**  
Unconjugated  
**Full name:**  
solute carrier family 39 (zinc transporter), member 14  
**Gene ID:**  
23516

## Applications

**Tested Applications:**  
Sandwich ELISA

**Range:**  
0.195-12.5 ng/mL (Sandwich ELISA)

**Recommended Dilutions:**  
It is recommended that this reagent should be titrated in each testing system to obtain optimal results.

## Product Information

MP00583-3 targets SLC39A14/ZIP-14 in immunoassays as a matched antibody pair. Validated in Sandwich ELISA.

Capture antibody: SLC39A14/ZIP-14 Recombinant antibody, PBS Only (Capture/Detector) 83597-3-PBS (240577B3). 100 µg. Concentration 1 mg/mL.

Detection antibody: SLC39A14/ZIP-14 Recombinant antibody, PBS Only (Capture/Detector) 83597-2-PBS (240577G11). 100 µg. Concentration 1 mg/mL.

Unconjugated rabbit recombinant monoclonal antibody pair in PBS only storage buffer at a concentration of 1 mg/mL, ready for conjugation. Created using Proteintech's proprietary in-house recombinant technology. Recombinant production enables unrivalled batch-to-batch consistency, easy scale-up, and future security of supply.

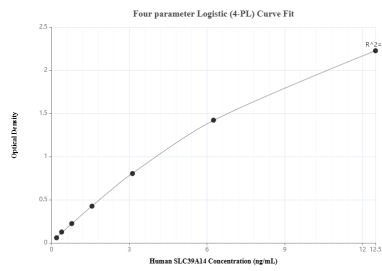
Matched antibody pairs are designed for use in a variety of assays and platforms that require matched antibody pairs.

Antibody use should be optimized for each application and assay.

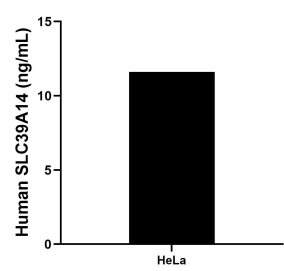
## Storage

**Storage:**  
Store at -80°C.  
**Storage buffer:**  
PBS only

## Selected Validation Data



Sandwich ELISA standard curve of MP00583-3, Human SLC39A14/ZIP-14 Recombinant Matched Antibody Pair - PBS only. 83597-3-PBS was coated to a plate as the capture antibody and incubated with serial dilutions of standard Ag24210. 83597-2-PBS was HRP conjugated as the detection antibody. Range:0.195-12.5 ng/mL



The mean SLC39A14/ZIP-14 concentration was determined to be 11.60 ng/mL in HeLa cell extract based on a 1.3 mg/mL extract load.