

# phospho(409/410)-TDP43 Recombinant Matched Antibody Pair, PBS Only

Catalog Number: **MP00589-2**

## Capture Antibody Information

**Catalog Number:**  
80007-1-PBS  
**Host:**  
Rabbit  
**Isotype:**  
IgG  
**Purification Method:**  
Protein A purification

**Clone ID:**  
6M10  
**Reactivity:**  
human, mouse

**Conjugate:**  
Unconjugated  
**Full name:**  
TAR DNA binding protein  
**Gene ID:**  
23435

## Detection Antibody Information

**Catalog Number:**  
80002-1-PBS  
**Host:**  
Rabbit  
**Isotype:**  
IgG  
**Purification Method:**  
Protein A purification

**Clone ID:**  
16A22  
**Reactivity:**  
human, mouse, rat  
**GenBank:**  
BC001487  
**Immunogen Catalog Number:**  
Ag1231

**Conjugate:**  
Unconjugated  
**Full name:**  
TAR DNA binding protein  
**Gene ID:**  
23435

## Applications

**Tested Applications:**  
Cytometric bead array

**Range:**  
N/A (Cytometric Bead Array)

**Recommended Dilutions:**  
It is recommended that this reagent should be titrated in each testing system to obtain optimal results.

## Product Information

MP00589-2 targets phospho(409/410)-TDP43 in immunoassays as a matched antibody pair. Validated in Cytometric bead array.

Capture antibody: Phospho-TDP43 (Ser409/410) Recombinant antibody, PBS Only (Capture) 80007-1-PBS (6M10). 100 µg. Concentration 1 mg/ml.

Detection antibody: TDP-43 Recombinant antibody, PBS Only (Detector) 80002-1-PBS (16A22). 100 µg. Concentration 1 mg/ml.

Alternative phospho(409/410)-TDP43 matched antibody pairs: MP00589-1

Unconjugated rabbit recombinant monoclonal antibody pair in PBS only storage buffer at a concentration of 1 mg/mL, ready for conjugation. Created using Proteintech's proprietary in-house recombinant technology. Recombinant production enables unrivalled batch-to-batch consistency, easy scale-up, and future security of supply.

Matched antibody pairs are designed for use in a variety of assays and platforms that require matched antibody pairs.

Antibody use should be optimized for each application and assay.

## Storage

**Storage:**  
Store at -80°C.  
**Storage buffer:**  
PBS only

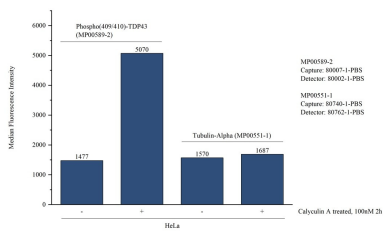
For technical support and original validation data for this product please contact:

T: 1 (888) 4PTGLAB (1-888-478-4522) (toll free in USA), or 1(312) 455-8498 (outside USA)

E: [proteintech@ptglab.com](mailto:proteintech@ptglab.com)  
W: [ptglab.com](http://ptglab.com)

**This product is exclusively available under Proteintech Group brand and is not available to purchase from any other manufacturer.**

# Selected Validation Data



Cytometric bead array in cell lysate using MP00589-2, phospho(409/410)-TDP43 Recombinant Matched Antibody Pair, PBS Only. Capture antibody: 80007-1-PBS. Detection antibody: 80002-1-PBS. Cell lysate(30µg/well): Non-treated HeLa and Calyculin A treated HeLa cells were lysed in 8M urea buffer and diluted in assay buffer. Non-related target Tubulin-Alpha Recombinant Matched Antibody Pair (MP00551-1) was served as control.