

# MNT Recombinant Matched Antibody Pair, PBS Only

Catalog Number: **MP00617-1**

## Capture Antibody Information

**Catalog Number:**

83648-1-PBS

**Host:**

Rabbit

**Isotype:**

IgG

**Purification Method:**

Protein A purification

**Clone ID:**

240550A10

**Reactivity:**

human, rat

**Immunogen Catalog Number:**

Ag34529

**Conjugate:**

Unconjugated

**Full name:**

MAX binding protein

**Gene ID:**

4335

## Detection Antibody Information

**Catalog Number:**

83648-3-PBS

**Host:**

Rabbit

**Isotype:**

IgG

**Purification Method:**

Protein A purification

**Clone ID:**

240550D12

**Reactivity:**

human

**GenBank:**

BC117563

**Immunogen Catalog Number:**

Ag34529

**Conjugate:**

Unconjugated

**Full name:**

MAX binding protein

**Gene ID:**

4335

## Applications

**Tested Applications:**

Cytometric bead array, Sandwich ELISA

**Range:**0.625-80 ng/mL (Cytometric Bead Array)  
0.156-10 ng/mL (Sandwich ELISA)**Recommended Dilutions:**

It is recommended that this reagent should be titrated in each testing system to obtain optimal results.

## Product Information

MP00617-1 targets MNT in immunoassays as a matched antibody pair. Validated in Cytometric bead array, Sandwich ELISA.

Capture antibody: MNT Recombinant antibody, PBS Only (Capture) 83648-1-PBS (240550A10). 100 µg. Concentration 1 mg/mL.

Detection antibody: MNT Recombinant antibody, PBS Only (Detector) 83648-3-PBS (240550D12). 100 µg. Concentration 1 mg/mL.

Alternative MNT matched antibody pairs: MP00617-2, MP00617-3

Unconjugated rabbit recombinant monoclonal antibody pair in PBS only storage buffer at a concentration of 1 mg/mL, ready for conjugation. Created using Proteintech's proprietary in-house recombinant technology. Recombinant production enables unrivalled batch-to-batch consistency, easy scale-up, and future security of supply.

Matched antibody pairs are designed for use in a variety of assays and platforms that require matched antibody pairs.

Antibody use should be optimized for each application and assay.

## Storage

**Storage:**

Store at -80°C.

**Storage buffer:**

PBS only

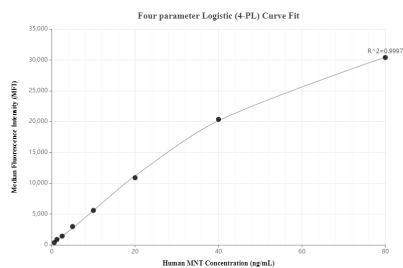
For technical support and original validation data for this product please contact:

T: 1 (888) 4PTGLAB (1-888-478-4522) (toll free in USA), or 1(312) 455-8498 (outside USA)

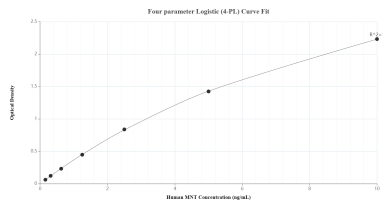
E: [proteintech@ptglab.com](mailto:proteintech@ptglab.com)  
W: [ptglab.com](http://ptglab.com)

This product is exclusively available under Proteintech Group brand and is not available to purchase from any other manufacturer.

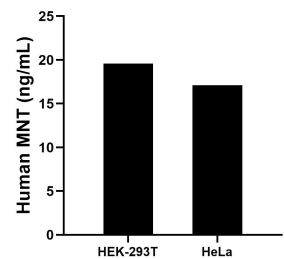
## Selected Validation Data



Cytometric bead array standard curve of MP00617-1, MNT Recombinant Matched Antibody Pair, PBS Only. Capture antibody: 83648-1-PBS. Detection antibody: 83648-3-PBS. Standard: Ag34529. Range: 0.625-80 ng/mL



Sandwich ELISA standard curve of MP00617-1, Human MNT Recombinant Matched Antibody Pair - PBS only. 83648-1-PBS was coated to a plate as the capture antibody and incubated with serial dilutions of standard Ag34529. 83648-3-PBS was HRP conjugated as the detection antibody. Range: 0.156-10 ng/mL



The mean MNT concentration was determined to be 19.62 ng/mL in HEK-293T cell extract based on a 5.50 mg/mL extract load and 17.06 ng/mL in HeLa cell extract based on a 3.60 mg/mL extract load.