

RNASET2 Recombinant Matched Antibody Pair, PBS Only

Catalog Number: **MP00620-1**

Capture Antibody Information

Catalog Number:
83650-2-PBS
Host:
Rabbit
Isotype:
IgG
Purification Method:
Protein A purification

Clone ID:
240581D11
Reactivity:
human
Immunogen Catalog Number:
Ag28353

Conjugate:
Unconjugated
Full name:
ribonuclease T2
Gene ID:
8635

Detection Antibody Information

Catalog Number:
83650-1-PBS
Host:
Rabbit
Isotype:
IgG
Purification Method:
Protein A purification

Clone ID:
240581C4
Reactivity:
human
GenBank:
BC039713
Immunogen Catalog Number:
Ag28353

Conjugate:
Unconjugated
Full name:
ribonuclease T2
Gene ID:
8635

Applications

Tested Applications:
Cytometric bead array, Sandwich ELISA

Range:
3.125-200 ng/mL (Cytometric Bead Array)
0.156-10 ng/mL (Sandwich ELISA)

Recommended Dilutions:
It is recommended that this reagent should be titrated in each testing system to obtain optimal results.

Product Information

MP00620-1 targets RNASET2 in immunoassays as a matched antibody pair. Validated in Cytometric bead array, Sandwich ELISA.

Capture antibody: RNASET2 Recombinant antibody, PBS Only (Capture) 83650-2-PBS (240581D11). 100 µg. Concentration 1 mg/mL.

Detection antibody: RNASET2 Recombinant antibody, PBS Only (Detector) 83650-1-PBS (240581C4). 100 µg. Concentration 1 mg/mL.

Unconjugated rabbit recombinant monoclonal antibody pair in PBS only storage buffer at a concentration of 1 mg/mL, ready for conjugation. Created using Proteintech's proprietary in-house recombinant technology. Recombinant production enables unrivalled batch-to-batch consistency, easy scale-up, and future security of supply.

Matched antibody pairs are designed for use in a variety of assays and platforms that require matched antibody pairs.

Antibody use should be optimized for each application and assay.

Storage

Storage:
Store at -80°C.
Storage buffer:
PBS only

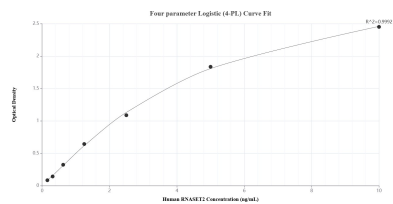
For technical support and original validation data for this product please contact:

T: 1 (888) 4PTGLAB (1-888-478-4522) (toll free in USA), or 1(312) 455-8498 (outside USA)

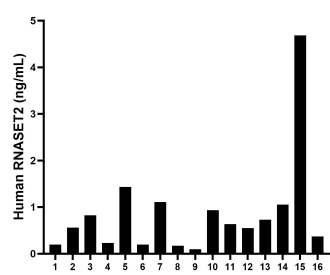
E: proteintech@ptglab.com
W: ptglab.com

This product is exclusively available under Proteintech Group brand and is not available to purchase from any other manufacturer.

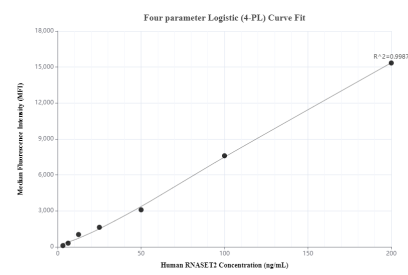
Selected Validation Data



Sandwich ELISA standard curve of MP00620-1, Human RNASET2 Recombinant Matched Antibody Pair - PBS only. 83650-2-PBS was coated to a plate as the capture antibody and incubated with serial dilutions of standard Ag28353. 83650-1-PBS was HRP conjugated as the detection antibody. Range: 0.156-10 ng/mL.



Serum of sixteen individual healthy human donors was measured. The RNASET2 concentration of detected samples was determined to be 0.86 ng/mL with a range of 0.10-4.68 ng/mL.



Cytometric bead array standard curve of MP00620-1, RNASET2 Recombinant Matched Antibody Pair, PBS Only. Capture antibody: 83650-2-PBS. Detection antibody: 83650-1-PBS. Standard: Ag28353. Range: 3.125-200 ng/mL.