

Optineurin Recombinant Matched Antibody Pair, PBS Only

Catalog Number: **MP00621-2**

Capture Antibody Information

Catalog Number:
83634-2-PBSHost:
RabbitIsotype:
IgGPurification Method:
Protein A purificationClone ID:
240636E8Reactivity:
humanImmunogen Catalog Number:
Ag1272Conjugate:
UnconjugatedFull name:
optineurinGene ID:
10133

Detection Antibody Information

Catalog Number:
83634-3-PBSHost:
RabbitIsotype:
IgGPurification Method:
Protein A purificationClone ID:
240636D12Reactivity:
humanGenBank:
BC013876Immunogen Catalog Number:
Ag1272Conjugate:
UnconjugatedFull name:
optineurinGene ID:
10133

Applications

Tested Applications:

Cytometric bead array, Sandwich
ELISA

Range:

1.25-80 ng/mL (Cytometric Bead
Array)
93.8-6000 pg/mL (Sandwich ELISA)

Recommended Dilutions:

It is recommended that this reagent
should be titrated in each testing
system to obtain optimal results.

Product Information

MP00621-2 targets Optineurin in immunoassays as a matched antibody pair. Validated in Cytometric bead array, Sandwich ELISA.

Capture antibody: Optineurin Recombinant antibody, PBS Only (Capture) 83634-2-PBS (240636E8). 100 µg. Concentration 1 mg/mL.

Detection antibody: Optineurin Recombinant antibody, PBS Only (Detector) 83634-3-PBS (240636D12). 100 µg. Concentration 1 mg/mL.

Unconjugated rabbit recombinant monoclonal antibody pair in PBS only storage buffer at a concentration of 1 mg/mL, ready for conjugation. Created using Proteintech's proprietary in-house recombinant technology. Recombinant production enables unrivalled batch-to-batch consistency, easy scale-up, and future security of supply.

Matched antibody pairs are designed for use in a variety of assays and platforms that require matched antibody pairs.

Antibody use should be optimized for each application and assay.

Storage

Storage:

Store at -80°C.

Storage buffer:

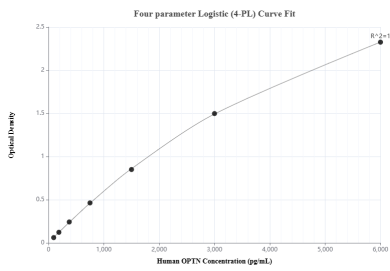
PBS only

For technical support and original validation data for this product please contact:

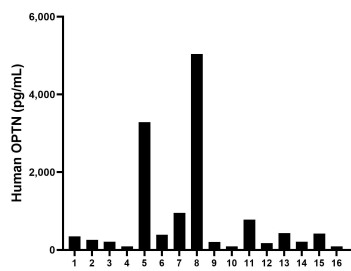
T: 1 (888) 4PTGLAB (1-888-478-4522) (toll free
in USA), or 1(312) 455-8498 (outside USA)E: proteintech@ptglab.com
W: ptglab.com

This product is exclusively available under Proteintech Group brand and is not available to purchase from any other manufacturer.

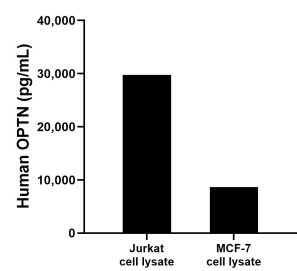
Selected Validation Data



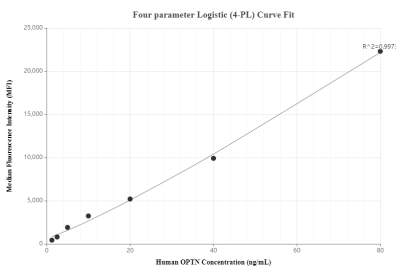
Sandwich ELISA standard curve of MP00621-2, Human OPTN Recombinant Matched Antibody Pair - PBS only. 83634-2-PBS was coated to a plate as the capture antibody and incubated with serial dilutions of standard Ag1272. 83634-3-PBS was HRP conjugated as the detection antibody. Range: 93.8-6000 pg/mL



Serum of sixteen individual healthy human donors was measured. The human OPTN concentration of detected samples was determined to be 813.0 pg/mL with a range of 92.0 - 5,037.9 pg/mL



Jurkat and MCF-7 cell lysates were measured. The human OPTN concentration of detected samples was determined to be 29,772.0 pg/mL (based on a 1.0 mg/mL extract load) in Jurkat cell lysate and 8,643.8 pg/mL (based on a 4.3 mg/mL extract load) in MCF-7 cell lysate.



Cytometric bead array standard curve of MP00621-2, OPTN Recombinant Matched Antibody Pair, PBS Only. Capture antibody: 83634-2-PBS. Detection antibody: 83634-3-PBS. Standard: Ag1272. Range: 1.25-80 ng/mL