

# CEA/CD66e Recombinant Matched Antibody Pair, PBS Only

Catalog Number: **MP00626-3**

## Capture Antibody Information

**Catalog Number:**  
83653-1-PBS  
**Host:**  
Rabbit  
**Isotype:**  
IgG  
**Purification Method:**  
Protein A purification

**Clone ID:**  
240666B6  
**Reactivity:**  
human

**Conjugate:**  
Unconjugated  
**Full name:**  
carcinoembryonic antigen-related cell adhesion molecule 5  
**Gene ID:**  
1048

## Detection Antibody Information

**Catalog Number:**  
83653-3-PBS  
**Host:**  
Rabbit  
**Isotype:**  
IgG  
**Purification Method:**  
Protein A purification

**Clone ID:**  
240666C12  
**Reactivity:**  
human  
**GenBank:**  
NM\_004363

**Conjugate:**  
Unconjugated  
**Full name:**  
carcinoembryonic antigen-related cell adhesion molecule 5  
**Gene ID:**  
1048

## Applications

**Tested Applications:**  
Cytometric bead array, Sandwich ELISA

**Range:**  
0.625-80 ng/mL (Cytometric Bead Array)  
7.8-500 pg/mL (Sandwich ELISA)

**Recommended Dilutions:**  
It is recommended that this reagent should be titrated in each testing system to obtain optimal results.

## Product Information

MP00626-3 targets CEA/CD66e in immunoassays as a matched antibody pair. Validated in Cytometric bead array, Sandwich ELISA.

Capture antibody: CEA/CD66e Recombinant antibody, PBS Only (Capture) 83653-1-PBS (240666B6). 100 µg. Concentration 1 mg/mL.

Detection antibody: CEA/CD66e Recombinant antibody, PBS Only (Detector) 83653-3-PBS (240666C12). 100 µg. Concentration 1 mg/mL.

Unconjugated rabbit recombinant monoclonal antibody pair in PBS only storage buffer at a concentration of 1 mg/mL, ready for conjugation. Created using Proteintech's proprietary in-house recombinant technology. Recombinant production enables unrivalled batch-to-batch consistency, easy scale-up, and future security of supply.

Matched antibody pairs are designed for use in a variety of assays and platforms that require matched antibody pairs.

Antibody use should be optimized for each application and assay.

## Storage

**Storage:**  
Store at -80°C.  
**Storage buffer:**  
PBS only

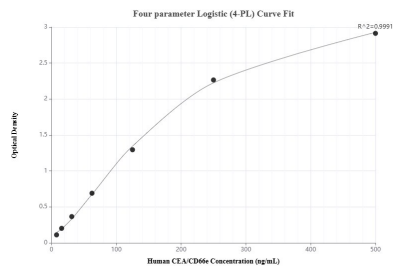
For technical support and original validation data for this product please contact:

T: 1 (888) 4PTGLAB (1-888-478-4522) (toll free in USA), or 1(312) 455-8498 (outside USA)

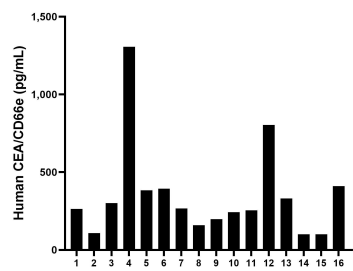
E: [proteintech@ptglab.com](mailto:proteintech@ptglab.com)  
W: [ptglab.com](http://ptglab.com)

**This product is exclusively available under Proteintech Group brand and is not available to purchase from any other manufacturer.**

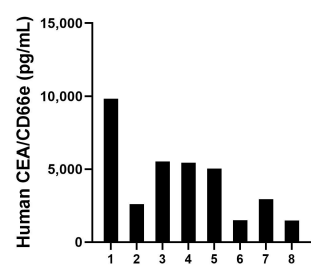
Selected Validation Data



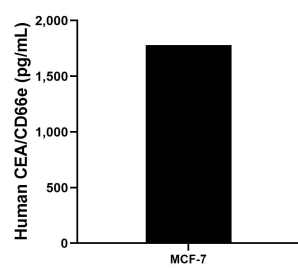
Sandwich ELISA standard curve of MP00626-3, Human CEA/CD66e Recombinant Matched Antibody Pair - PBS only. 83653-1-PBS was coated to a plate as the capture antibody and incubated with serial dilutions of standard Eg0449. 83653-3-PBS was HRP conjugated as the detection antibody. Range: 7.8-500 pg/mL



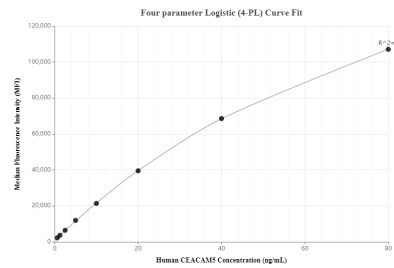
Serum of sixteen individual healthy human donors was measured. The human CEA/CD66e concentration of detected samples was determined to be 351.5 pg/mL with a range of 100.4 - 1,305.8 pg/mL



Saliva of eight individual healthy human donors was measured. The human CEA/CD66e concentration of detected samples was determined to be 4,297.5 pg/mL with a range of 1,476.6 - 9,827.4 pg/mL



The mean CEA/CD66e concentration was determined to be 1,780.9 pg/mL in MCF-7 cell extract based on a 1.5 mg/mL extract load.



Cytometric bead array standard curve of MP00626-3, CEA/CD66e Recombinant Matched Antibody Pair, PBS Only. Capture antibody: 83653-1-PBS. Detection antibody: 83653-3-PBS. Standard: Eg0449. Range: 0.625-80 ng/mL