

Rat Albumin Recombinant Matched Antibody Pair, PBS Only

Catalog Number: **MP00652-4**

Capture Antibody Information

Catalog Number:
83697-3-PBS
Host:
Rabbit
Isotype:
IgG
Purification Method:
Protein A purification

Clone ID:
240745A5
Reactivity:
rat

Conjugate:
Unconjugated
Full name:
albumin
Gene ID:
24186

Detection Antibody Information

Catalog Number:
83697-4-PBS
Host:
Rabbit
Isotype:
IgG
Purification Method:
Protein A purification

Clone ID:
240745E4
Reactivity:
rat
GenBank:

Conjugate:
Unconjugated
Full name:
albumin
Gene ID:
24186

Applications

Tested Applications:
Sandwich ELISA

Range:
0.31-20 ng/mL (Sandwich ELISA)

Recommended Dilutions:
It is recommended that this reagent should be titrated in each testing system to obtain optimal results.

Product Information

MP00652-4 targets Albumin in immunoassays as a matched antibody pair. Validated in Sandwich ELISA.

Capture antibody: Rat Albumin Recombinant antibody, PBS Only (Capture/Detector) 83697-3-PBS (240745A5). 100 µg. Concentration 1 mg/mL.

Detection antibody: Rat Albumin Recombinant antibody, PBS Only (Detector) 83697-4-PBS (240745E4). 100 µg. Concentration 1 mg/mL.

Unconjugated rabbit recombinant monoclonal antibody pair in PBS only storage buffer at a concentration of 1 mg/mL, ready for conjugation. Created using Proteintech's proprietary in-house recombinant technology. Recombinant production enables unrivalled batch-to-batch consistency, easy scale-up, and future security of supply.

Matched antibody pairs are designed for use in a variety of assays and platforms that require matched antibody pairs.

Antibody use should be optimized for each application and assay.

Storage

Storage:
Store at -80°C.
Storage buffer:
PBS only

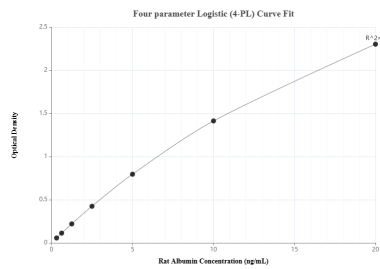
For technical support and original validation data for this product please contact:

T: 1 (888) 4PTGLAB (1-888-478-4522) (toll free in USA), or 1(312) 455-8498 (outside USA)

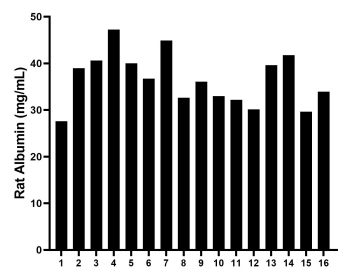
E: proteintech@ptglab.com
W: ptglab.com

This product is exclusively available under Proteintech Group brand and is not available to purchase from any other manufacturer.

Selected Validation Data



Sandwich ELISA standard curve of MP00652-4, Rat Albumin Recombinant Matched Antibody Pair - PBS only. 83697-3-PBS was coated to a plate as the capture antibody and incubated with serial dilutions of standard Eg0935. 83697-4-PBS was HRP conjugated as the detection antibody. Range: 0.31-20 ng/mL



Serum of sixteen rats was measured. The Albumin concentration of detected samples was determined to be 36.6 mg/mL with a range of 27.6 - 47.2 mg/mL.