

# IL-22 Recombinant Matched Antibody Pair, PBS Only

Catalog Number: **MP00657-2**

## Capture Antibody Information

**Catalog Number:**

82766-12-PBS

**Host:**

Rabbit

**Isotype:**

IgG

**Purification Method:**

Protein A purification

**Clone ID:**

240699D1

**Reactivity:**

human

**Conjugate:**

Unconjugated

**Full name:**

interleukin 22

**Gene ID:**

50616

## Detection Antibody Information

**Catalog Number:**

82766-11-PBS

**Host:**

Rabbit

**Isotype:**

IgG

**Purification Method:**

Protein A purification

**Clone ID:**

240699A4

**Reactivity:**

human

**GenBank:**

BC070261

**Conjugate:**

Unconjugated

**Full name:**

interleukin 22

**Gene ID:**

50616

## Applications

**Tested Applications:**

Cytometric bead array, Sandwich ELISA

**Range:**0.313-40 ng/mL (Cytometric Bead Array)  
3.91-250 pg/mL (Sandwich ELISA)**Recommended Dilutions:**

It is recommended that this reagent should be titrated in each testing system to obtain optimal results.

## Product Information

MP00657-2 targets IL-22 in immunoassays as a matched antibody pair. Validated in Cytometric bead array, Sandwich ELISA.

Capture antibody: IL-22 Recombinant antibody, PBS Only (Capture) 82766-12-PBS (240699D1). 100 µg. Concentration 1 mg/mL.

Detection antibody: IL-22 Recombinant antibody, PBS Only (Detector) 82766-11-PBS (240699A4). 100 µg. Concentration 1 mg/mL.

Alternative IL-22 matched antibody pairs: MP00410-1, MP00410-2, MP00657-1, MP00657-3

Unconjugated rabbit recombinant monoclonal antibody pair in PBS only storage buffer at a concentration of 1 mg/mL, ready for conjugation. Created using Proteintech's proprietary in-house recombinant technology. Recombinant production enables unrivalled batch-to-batch consistency, easy scale-up, and future security of supply.

Matched antibody pairs are designed for use in a variety of assays and platforms that require matched antibody pairs.

Antibody use should be optimized for each application and assay.

## Storage

**Storage:**

Store at -80°C.

**Storage buffer:**

PBS only

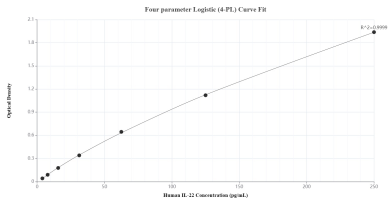
For technical support and original validation data for this product please contact:

T: 1 (888) 4PTGLAB (1-888-478-4522) (toll free in USA), or 1(312) 455-8498 (outside USA)

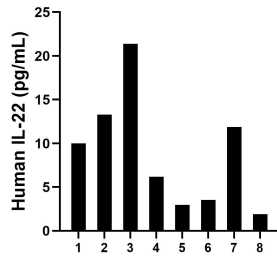
E: [proteintech@ptglab.com](mailto:proteintech@ptglab.com)  
W: [ptglab.com](http://ptglab.com)

This product is exclusively available under Proteintech Group brand and is not available to purchase from any other manufacturer.

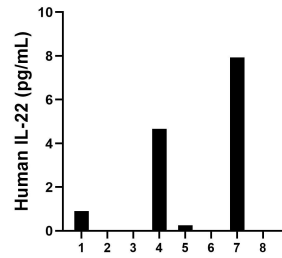
Selected Validation Data



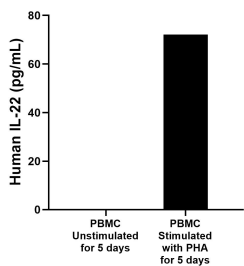
Sandwich ELISA standard curve of MP00657-2, Human IL-22 Recombinant Matched Antibody Pair - PBS only. 82766-12-PBS was coated to a plate as the capture antibody and incubated with serial dilutions of standard Eg0228. 82766-11-PBS was HRP conjugated as the detection antibody. Range: 3.91-250 pg/mL



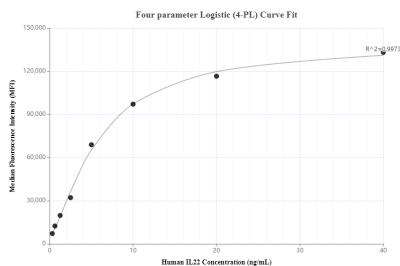
Serum of eight individual healthy human donors was measured. The IL-22 concentration of detected samples was determined to be 8.9 pg/mL with a range of ND - 21.4 pg/mL



Urine of eight individual healthy human donors was measured. The IL-22 concentration of detected samples was determined to be 2.8 pg/mL with a range of ND - 7.9 pg/mL



Human peripheral blood mononuclear cells (PBMC) were cultured unstimulated or stimulated with 10 µg/mL PHA for 5 days. The mean IL-22 concentration was not determined in unstimulated PBMC supernatant, 72.1 pg/mL in PHA stimulated PBMC supernatant.



Cytometric bead array standard curve of MP00657-2, IL-22 Recombinant Matched Antibody Pair, PBS Only. Capture antibody: 82766-12-PBS. Detection antibody: 82766-11-PBS. Standard: Eg0228. Range: 0.313-40 ng/mL