

# CHI3L1/YKL40 Recombinant Matched Antibody Pair, PBS Only

Catalog Number: **MP00663-4**

## Capture Antibody Information

**Catalog Number:**  
83685-6-PBS  
**Host:**  
Rabbit  
**Isotype:**  
IgG  
**Purification Method:**  
Protein A purification

**Clone ID:**  
253193A1  
**Reactivity:**  
human  
**Immunogen Catalog Number:**  
Eg4992

**Conjugate:**  
Unconjugated  
**Full name:**  
chitinase 3-like 1 (cartilage  
glycoprotein-39)  
**Gene ID:**  
1116

## Detection Antibody Information

**Catalog Number:**  
83685-5-PBS  
**Host:**  
Rabbit  
**Isotype:**  
IgG  
**Purification Method:**  
Protein A purification

**Clone ID:**  
253193B1  
**Reactivity:**  
human  
**GenBank:**  
NM\_001276.4  
**Immunogen Catalog Number:**  
Eg4992

**Conjugate:**  
Unconjugated  
**Full name:**  
chitinase 3-like 1 (cartilage  
glycoprotein-39)  
**Gene ID:**  
1116

## Applications

**Tested Applications:**  
Cytometric bead array

**Range:**  
0.312-40 ng/mL (Cytometric Bead  
Array)

**Recommended Dilutions:**  
It is recommended that this reagent  
should be titrated in each testing  
system to obtain optimal results.

## Product Information

MP00663-4 targets CHI3L1/YKL40 in immunoassays as a matched antibody pair. Validated in Cytometric bead array.

Capture antibody: Chitinase 3-like 1/CHI3L1 Recombinant monoclonal antibody, PBS Only (Capture) 83685-6-PBS (253193A1). 100 µg. Concentration 1 mg/mL.

Detection antibody: Chitinase 3-like 1/CHI3L1 Recombinant monoclonal antibody, PBS Only (Detector) 83685-5-PBS (253193B1). 100 µg. Concentration 1 mg/mL.

Unconjugated rabbit recombinant monoclonal antibody pair in PBS only storage buffer at a concentration of 1 mg/mL, ready for conjugation. Created using Proteintech's proprietary in-house recombinant technology. Recombinant production enables unrivalled batch-to-batch consistency, easy scale-up, and future security of supply.

Matched antibody pairs are designed for use in a variety of assays and platforms that require matched antibody pairs.

Antibody use should be optimized for each application and assay.

## Storage

**Storage:**  
Store at -80°C.  
**Storage buffer:**  
PBS only

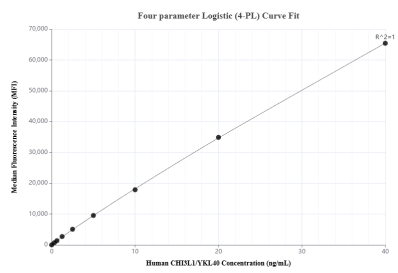
For technical support and original validation data for this product please contact:

T: 1 (888) 4PTGLAB (1-888-478-4522) (toll free  
in USA), or 1(312) 455-8498 (outside USA)

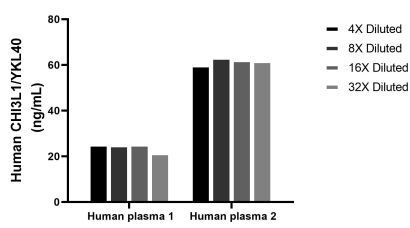
E: [proteintech@ptglab.com](mailto:proteintech@ptglab.com)  
W: [ptglab.com](http://ptglab.com)

**This product is exclusively available under Proteintech  
Group brand and is not available to purchase from any  
other manufacturer.**

## Selected Validation Data



Cytometric bead array standard curve of MP00663-4, CHI3L1/YKL40 Recombinant Matched Antibody Pair, PBS Only. Capture antibody: 83685-6-PBS. Detection antibody: 83685-5-PBS. Standard: Eg4992. Range: 0.312-40 ng/mL.



The mean CHI3L1/YKL40 concentration was determined to be 24.2 ng/mL in human plasma 1, 61.8 ng/mL in human plasma 2.