

CD126/IL-6R alpha Recombinant Matched Antibody Pair, PBS Only

Catalog Number: MP00676-1

Capture Antibody Information

Catalog Number:

83688-3-PBS

Host:

Rabbit

Isotype:

IgG

Purification Method:

Protein A purification

Clone ID:

240734A8

Reactivity:

human

Conjugate:

Unconjugated

Full name:

interleukin 6 receptor

Gene ID:

3570

Detection Antibody Information

Catalog Number:

83688-2-PBS

Host:

Rabbit

Isotype:

IgG

Purification Method:

Protein A purification

Clone ID:

240734B6

Reactivity:

human

GenBank:

BC132684

Conjugate:

Unconjugated

Full name:

interleukin 6 receptor

Gene ID:

3570

Applications

Tested Applications:

Cytometric bead array, Sandwich ELISA

Range:

0.625-80 ng/mL (Cytometric Bead Array)
7.8-500 pg/mL (Sandwich ELISA)

Recommended Dilutions:

It is recommended that this reagent should be titrated in each testing system to obtain optimal results.

Product Information

MP00676-1 targets CD126/IL-6R alpha in immunoassays as a matched antibody pair. Validated in Cytometric bead array, Sandwich ELISA.

Capture antibody: CD126/IL-6R alpha Recombinant antibody, PBS Only (Capture) 83688-3-PBS (240734A8). 100 µg. Concentration 1 mg/mL.

Detection antibody: CD126/IL-6R alpha Recombinant antibody, PBS Only (Detector) 83688-2-PBS (240734B6). 100 µg. Concentration 1 mg/mL.

Alternative CD126/IL-6R alpha matched antibody pairs: MP00676-2, MP50060-1

Unconjugated rabbit recombinant monoclonal antibody pair in PBS only storage buffer at a concentration of 1 mg/mL, ready for conjugation. Created using Proteintech's proprietary in-house recombinant technology. Recombinant production enables unrivalled batch-to-batch consistency, easy scale-up, and future security of supply.

Matched antibody pairs are designed for use in a variety of assays and platforms that require matched antibody pairs.

Antibody use should be optimized for each application and assay.

Storage

Storage:

Store at -80°C.

Storage buffer:

PBS only

For technical support and original validation data for this product please contact:

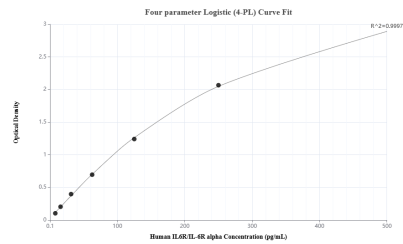
T: 1 (888) 4PTGLAB (1-888-478-4522) (toll free in USA), or 1(312) 455-8498 (outside USA)

E: proteintech@ptglab.com

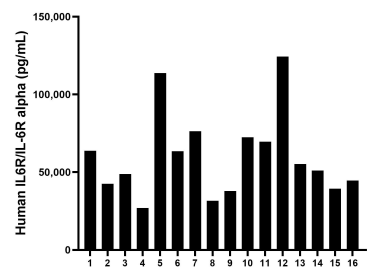
W: ptglab.com

This product is exclusively available under Proteintech Group brand and is not available to purchase from any other manufacturer.

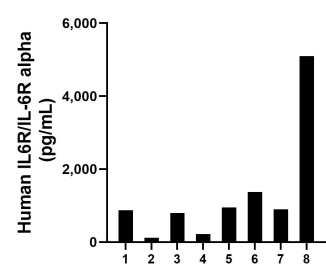
Selected Validation Data



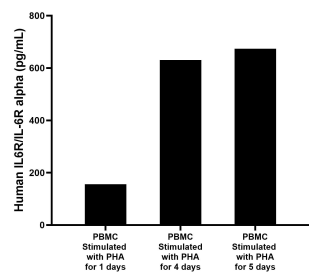
Sandwich ELISA standard curve of MP00676-1, Human IL6R/IL-6R alpha Recombinant Matched Antibody Pair - PBS only. 83688-3-PBS was coated to a plate as the capture antibody and incubated with serial dilutions of standard Eg0490. 83688-2-PBS was HRP conjugated as the detection antibody. Range: 7.8-500 pg/mL



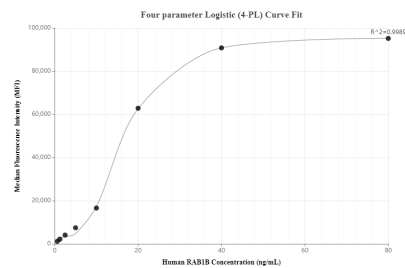
Serum of sixteen humans was measured. The human IL6R/IL-6R alpha concentration of these samples was determined to be 60,089 pg/mL, with a range of 37,850.6 - 124,335.2 pg/mL.



Urine of eight humans was measured. The human IL6R/IL-6R alpha concentration of these samples was determined to be 1,291.5 pg/mL, with a range of 119.4 - 5,099.9 pg/mL.



Human peripheral blood mononuclear cells (PBMC) (1×10^6 cells/mL) were cultured in DMEM supplemented with 8% fetal bovine serum, $5 \mu\text{M}$ β -mercaptoethanol, 2 mM L-glutamine, 100 U/mL penicillin, and 100 $\mu\text{g}/\text{mL}$ streptomycin sulfate. Cells were cultured unstimulated or stimulated with 10 $\mu\text{g}/\text{mL}$ PHA for 1day, 4 days and 5 days. Aliquots of the cell culture supernates were removed and assayed for levels of human IL6.



Cytometric bead array standard curve of MP00676-1, CD126/IL-6R alpha Recombinant Matched Antibody Pair, PBS Only. Capture antibody: 83688-3-PBS. Detection antibody: 83688-2-PBS. Standard: Eg0490. Range: 0.625-80 ng/mL.