

ASGR1 Recombinant Matched Antibody Pair, PBS Only

Catalog Number: **MP00681-3**

Capture Antibody Information

Catalog Number:
83691-1-PBS
Host:
Rabbit
Isotype:
IgG
Purification Method:
Protein A purification

Clone ID:
240672A3
Reactivity:
human

Conjugate:
Unconjugated
Full name:
asialoglycoprotein receptor 1
Gene ID:
432

Detection Antibody Information

Catalog Number:
83691-3-PBS
Host:
Rabbit
Isotype:
IgG
Purification Method:
Protein A purification

Clone ID:
240672C4
Reactivity:
human, mouse, rat
GenBank:
NM_001671.4

Conjugate:
Unconjugated
Full name:
asialoglycoprotein receptor 1
Gene ID:
432

Applications

Tested Applications:
Cytometric bead array, Sandwich ELISA

Range:
0.625-80 ng/mL (Cytometric Bead Array)
7.8-1000 pg/mL (Sandwich ELISA)

Recommended Dilutions:
It is recommended that this reagent should be titrated in each testing system to obtain optimal results.

Product Information

MP00681-3 targets ASGR1 in immunoassays as a matched antibody pair. Validated in Cytometric bead array, Sandwich ELISA.

Capture antibody: ASGR1 Recombinant antibody, PBS Only (Capture/Detector) 83691-1-PBS (240672A3). 100 µg. Concentration 1 mg/mL.

Detection antibody: ASGR1 Recombinant antibody, PBS Only (Detector) 83691-3-PBS (240672C4). 100 µg. Concentration 1 mg/mL.

Alternative ASGR1 matched antibody pairs: MP00681-1, MP00681-2, MP50623-1

Unconjugated rabbit recombinant monoclonal antibody pair in PBS only storage buffer at a concentration of 1 mg/mL, ready for conjugation. Created using Proteintech's proprietary in-house recombinant technology. Recombinant production enables unrivalled batch-to-batch consistency, easy scale-up, and future security of supply.

Matched antibody pairs are designed for use in a variety of assays and platforms that require matched antibody pairs.

Antibody use should be optimized for each application and assay.

Storage

Storage:
Store at -80°C.
Storage buffer:
PBS only

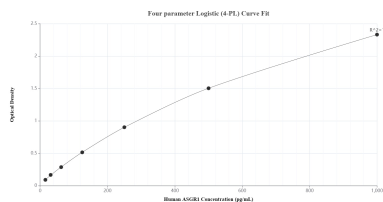
For technical support and original validation data for this product please contact:

T: 1 (888) 4PTGLAB (1-888-478-4522) (toll free in USA), or 1(312) 455-8498 (outside USA)

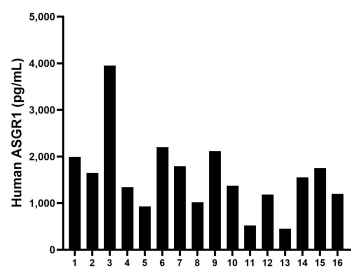
E: proteintech@ptglab.com
W: ptglab.com

This product is exclusively available under Proteintech Group brand and is not available to purchase from any other manufacturer.

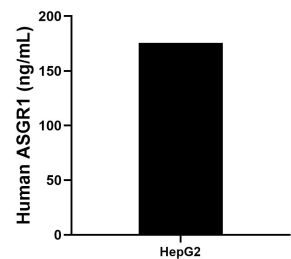
Selected Validation Data



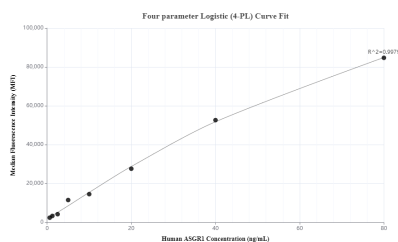
Sandwich ELISA standard curve of MP00681-3, Human ASGR1 Recombinant Matched Antibody Pair - PBS only. 83691-1-PBS was coated to a plate as the capture antibody and incubated with serial dilutions of standard Eg0946. 83691-3-PBS was HRP conjugated as the detection antibody. Range: 7.8-1000 pg/mL.



Serum of sixteen individual healthy human donors was measured. The ASGR1 concentration of detected samples was determined to be 1,563.4 pg/mL with a range of 450.5-3,950.7 pg/mL.



The mean human ASGR1 concentration was determined to be 175.6 ng/mL in HepG2 cell extract based on a 3.7 mg/mL extract load.



Cytometric bead array standard curve of MP00681-3, ASGR1 Recombinant Matched Antibody Pair, PBS Only. Capture antibody: 83691-1-PBS. Detection antibody: 83691-3-PBS. Standard: Eg0946. Range: 0.625-80 ng/mL.