

Mesothelin Recombinant Matched Antibody Pair, PBS Only

Catalog Number: **MP00697-2**

Capture Antibody Information

Catalog Number:
83744-5-PBS

Host:
Rabbit

Isotype:
IgG

Purification Method:
Protein A purification

Clone ID:
240795G1

Reactivity:
human

Immunogen Catalog Number:
Eg31658

Conjugate:
Unconjugated

Full name:
mesothelin

Gene ID:
10232

Detection Antibody Information

Catalog Number:
83744-2-PBS

Host:
Rabbit

Isotype:
IgG

Purification Method:
Protein A purification

Clone ID:
240795G5

Reactivity:
human

GenBank:
NM_005823

Immunogen Catalog Number:
Eg31658

Conjugate:
Unconjugated

Full name:
mesothelin

Gene ID:
10232

Applications

Tested Applications:

Cytometric bead array, Sandwich
ELISA

Range:

0.625-80 ng/mL (Cytometric Bead
Array)
39.1-2500 pg/mL (Sandwich ELISA)

Recommended Dilutions:

It is recommended that this reagent
should be titrated in each testing
system to obtain optimal results.

Product Information

MP00697-2 targets Mesothelin in immunoassays as a matched antibody pair. Validated in Cytometric bead array, Sandwich ELISA.

Capture antibody: Mesothelin Recombinant antibody, PBS Only (Capture) 83744-5-PBS (240795G1). 100 µg. Concentration 1 mg/mL.

Detection antibody: Mesothelin Recombinant antibody, PBS Only (Detector) 83744-2-PBS (240795G5). 100 µg. Concentration 1 mg/mL.

Unconjugated rabbit recombinant monoclonal antibody pair in PBS only storage buffer at a concentration of 1 mg/mL, ready for conjugation. Created using Proteintech's proprietary in-house recombinant technology. Recombinant production enables unrivalled batch-to-batch consistency, easy scale-up, and future security of supply.

Matched antibody pairs are designed for use in a variety of assays and platforms that require matched antibody pairs.

Antibody use should be optimized for each application and assay.

Storage

Storage:

Store at -80°C.

Storage buffer:

PBS only

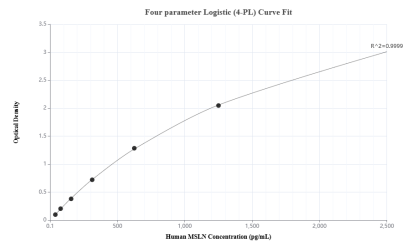
For technical support and original validation data for this product please contact:

T: 1 (888) 4PTGLAB (1-888-478-4522) (toll free
in USA), or 1(312) 455-8498 (outside USA)

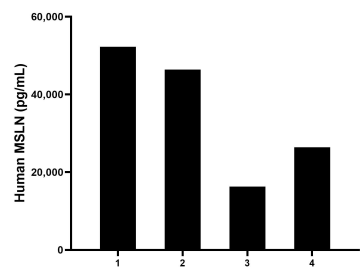
E: proteintech@ptglab.com
W: ptglab.com

This product is exclusively available under Proteintech Group brand and is not available to purchase from any other manufacturer.

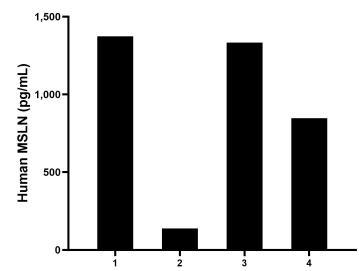
Selected Validation Data



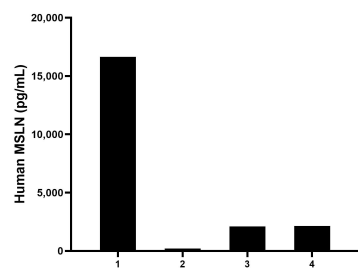
Sandwich ELISA standard curve of MP00697-2, Human MSLN/Mesothelin Recombinant Matched Antibody Pair - PBS only. 83744-5-PBS was coated to a plate as the capture antibody and incubated with serial dilutions of standard Eg31658. 83744-2-PBS was HRP conjugated as the detection antibody. Range: 39.1-2500 pg/mL



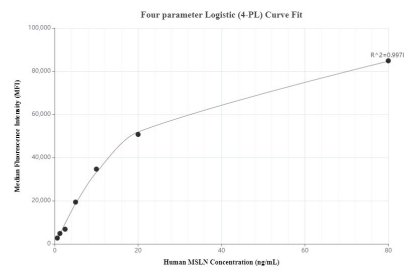
Serum of four humans was measured. The human MSLN/Mesothelin concentration of detected samples was determined to be 35,341.8 pg/mL with a range of 16,291.9 - 52,246.0 pg/mL



Urine of four humans was measured. The human MSLN/Mesothelin concentration of detected samples was determined to be 923.5 pg/mL with a range of 138.7 - 1,373.8 pg/mL



Saliva of four humans was measured. The human MSLN/Mesothelin concentration of detected samples was determined to be 5,273.4 pg/mL with a range of 209.0 - 16,634.9 pg/mL



Cytometric bead array standard curve of MP00697-2, MSLN/Mesothelin Recombinant Matched Antibody Pair, PBS Only. Capture antibody: 83744-5-PBS. Detection antibody: 83744-2-PBS. Standard: Eg31658. Range: 0.625-80 ng/mL