

VEGF-C Recombinant Matched Antibody Pair, PBS Only

Catalog Number: **MP00710-3**

Capture Antibody Information

Catalog Number:
83727-3-PBS
Host:
Rabbit
Isotype:
IgG
Purification Method:
Protein A purification

Clone ID:
240772C1
Reactivity:
human

Conjugate:
Unconjugated
Full name:
vascular endothelial growth factor C
Gene ID:
7424

Detection Antibody Information

Catalog Number:
83727-4-PBS
Host:
Rabbit
Isotype:
IgG
Purification Method:
Protein A purification

Clone ID:
240772G8
Reactivity:
human
GenBank:
BC035212

Conjugate:
Unconjugated
Full name:
vascular endothelial growth factor C
Gene ID:
7424

Applications

Tested Applications:
Cytometric bead array, Sandwich ELISA

Range:
0.313-20 ng/mL (Cytometric Bead Array)
109.4-7000 pg/mL (Sandwich ELISA)

Recommended Dilutions:
It is recommended that this reagent should be titrated in each testing system to obtain optimal results.

Product Information

MP00710-3 targets VEGF-C in immunoassays as a matched antibody pair. Validated in Cytometric bead array, Sandwich ELISA.

Capture antibody: VEGF-C Recombinant antibody, PBS Only (Capture/Detector) 83727-3-PBS (240772C1). 100 µg. Concentration 1 mg/mL.

Detection antibody: VEGF-C Recombinant antibody, PBS Only (Detector) 83727-4-PBS (240772G8). 100 µg. Concentration 1 mg/mL.

Alternative VEGF-C matched antibody pairs: MP00710-1, MP00710-2

Unconjugated rabbit recombinant monoclonal antibody pair in PBS only storage buffer at a concentration of 1 mg/mL, ready for conjugation. Created using Proteintech's proprietary in-house recombinant technology. Recombinant production enables unrivalled batch-to-batch consistency, easy scale-up, and future security of supply.

Matched antibody pairs are designed for use in a variety of assays and platforms that require matched antibody pairs.

Antibody use should be optimized for each application and assay.

Storage

Storage:
Store at -80°C.
Storage buffer:
PBS only

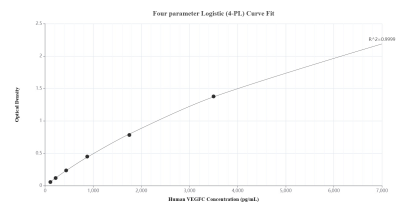
For technical support and original validation data for this product please contact:

T: 1 (888) 4PTGLAB (1-888-478-4522) (toll free in USA), or 1(312) 455-8498 (outside USA)

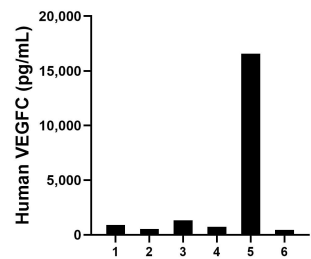
E: proteintech@ptglab.com
W: ptglab.com

This product is exclusively available under Proteintech Group brand and is not available to purchase from any other manufacturer.

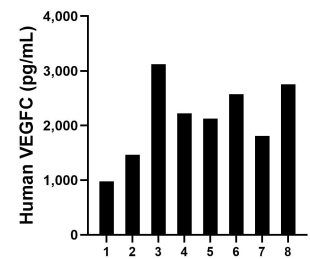
Selected Validation Data



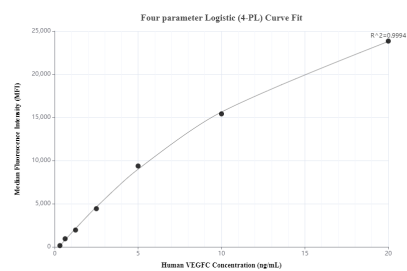
Sandwich ELISA standard curve of MP00710-3, Human VEGFC Recombinant Matched Antibody Pair - PBS only. 83727-3-PBS was coated to a plate as the capture antibody and incubated with serial dilutions of standard Eg32025. 83727-4-PBS was HRP conjugated as the detection antibody. Range: 109.4-7000 pg/mL



Serum of six individual healthy human donors was measured. The VEGFC concentration of detected samples was determined to be 3,419.6 pg/mL with a range of 440.5 - 16,575.6 pg/mL



Saliva of eight individual healthy human donors was measured. The VEGFC concentration of detected samples was determined to be 2,130.9 pg/mL with a range of 977.3 - 3,119.4 pg/mL



Cytometric bead array standard curve of MP00710-3, VEGF-C Recombinant Matched Antibody Pair, PBS Only. Capture antibody: 83727-3-PBS. Detection antibody: 83727-4-PBS. Standard: Eg32025. Range: 0.313-20 ng/mL