

SIRP Alpha/CD172a Recombinant Matched Antibody Pair, PBS Only

Catalog Number: **MP00713-1**

Capture Antibody Information

Catalog Number:

83729-1-PBS

Host:

Rabbit

Isotype:

IgG

Purification Method:

Protein A purification

Clone ID:

240789D4

Reactivity:

human

Conjugate:

Unconjugated

Full name:

signal-regulatory protein alpha

Gene ID:

140885

Detection Antibody Information

Catalog Number:

83729-4-PBS

Host:

Rabbit

Isotype:

IgG

Purification Method:

Protein A purification

Clone ID:

240789G10

Reactivity:

human

GenBank:

NM_080792

Conjugate:

Unconjugated

Full name:

signal-regulatory protein alpha

Gene ID:

140885

Applications

Tested Applications:

Cytometric bead array, Sandwich ELISA

Range:

0.313-40 ng/mL (Cytometric Bead Array)
62.5-4000 pg/mL (Sandwich ELISA)

Recommended Dilutions:

It is recommended that this reagent should be titrated in each testing system to obtain optimal results.

Product Information

MP00713-1 targets SIRP Alpha/CD172a in immunoassays as a matched antibody pair. Validated in Cytometric bead array, Sandwich ELISA.

Capture antibody: SIRP Alpha/CD172a Recombinant antibody, PBS Only (Capture) 83729-1-PBS (240789D4). 100 µg. Concentration 1 mg/mL.

Detection antibody: SIRP Alpha/CD172a Recombinant antibody, PBS Only (Detector) 83729-4-PBS (240789G10). 100 µg. Concentration 1 mg/mL.

Alternative SIRP Alpha/CD172a matched antibody pairs: MP00713-2

Unconjugated rabbit recombinant monoclonal antibody pair in PBS only storage buffer at a concentration of 1 mg/mL, ready for conjugation. Created using Proteintech's proprietary in-house recombinant technology. Recombinant production enables unrivalled batch-to-batch consistency, easy scale-up, and future security of supply.

Matched antibody pairs are designed for use in a variety of assays and platforms that require matched antibody pairs.

Antibody use should be optimized for each application and assay.

Storage

Storage:

Store at -80°C.

Storage buffer:

PBS only

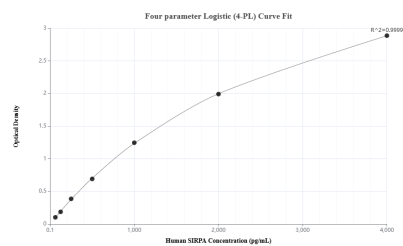
For technical support and original validation data for this product please contact:

T: 1 (888) 4PTGLAB (1-888-478-4522) (toll free in USA), or 1(312) 455-8498 (outside USA)

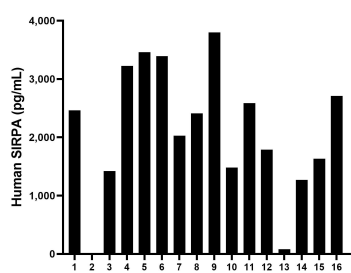
E: proteintech@ptglab.com
W: ptglab.com

This product is exclusively available under Proteintech Group brand and is not available to purchase from any other manufacturer.

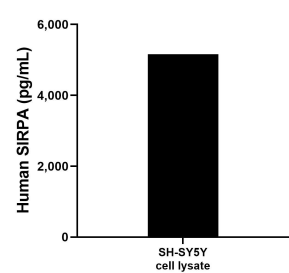
Selected Validation Data



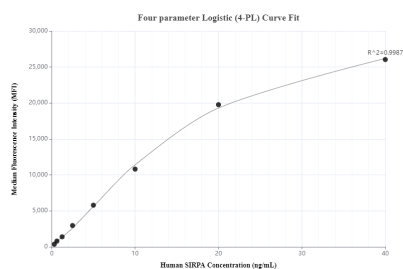
Sandwich ELISA standard curve of MP00713-1, Human SIRPA Recombinant Matched Antibody Pair - PBS only. 83729-1-PBS was coated to a plate as the capture antibody and incubated with serial dilutions of standard Eg0625. 83729-4-PBS was HRP conjugated as the detection antibody. Range: 62.5-4000 pg/mL



Serum of sixteen humans was measured. The human SIRPA concentration of detected samples was determined to be 2,250 pg/mL with a range of 79.96 - 3,800.09 pg/mL



SH-SY5Y cell lysate was measured. The human SIRPA concentration of detected samples was determined to be 5,156.59 pg/mL



Cytometric bead array standard curve of MP00713-1, SIRP Alpha Recombinant Matched Antibody Pair, PBS Only. Capture antibody: 83729-1-PBS. Detection antibody: 83729-4-PBS. Standard: Eg0625. Range: 0.313-40 ng/mL