

Mouse E-selectin/CD62E Recombinant Matched Antibody Pair, PBS Only

Catalog Number: **MP00720-3**

Capture Antibody Information

Catalog Number:
83720-4-PBS
Host:
Rabbit
Isotype:
IgG
Purification Method:
Protein A purification

Clone ID:
240700G8
Reactivity:
mouse

Conjugate:
Unconjugated
Full name:
selectin, endothelial cell
Gene ID:
20339

Detection Antibody Information

Catalog Number:
83720-1-PBS
Host:
Rabbit
Isotype:
IgG
Purification Method:
Protein A purification

Clone ID:
240700B9
Reactivity:
mouse
GenBank:
NM_011345.2

Conjugate:
Unconjugated
Full name:
selectin, endothelial cell
Gene ID:
20339

Applications

Tested Applications:
Cytometric bead array, Sandwich
ELISA

Range:
0.625-40 ng/mL (Cytometric Bead
Array)
39.1-2500 pg/mL (Sandwich ELISA)

Recommended Dilutions:
It is recommended that this reagent
should be titrated in each testing
system to obtain optimal results.

Product Information

MP00720-3 targets E-selectin/CD62E in immunoassays as a matched antibody pair. Validated in Cytometric bead array, Sandwich ELISA.

Capture antibody: Mouse E-selectin Recombinant antibody, PBS Only (Capture) 83720-4-PBS (240700G8). 100 µg. Concentration 1 mg/mL.

Detection antibody: Mouse E-selectin Recombinant antibody, PBS Only (Detector) 83720-1-PBS (240700B9). 100 µg. Concentration 1 mg/mL.

Alternative E-selectin/CD62E matched antibody pairs: MP00720-1, MP00720-2

Unconjugated rabbit recombinant monoclonal antibody pair in PBS only storage buffer at a concentration of 1 mg/mL, ready for conjugation. Created using Proteintech's proprietary in-house recombinant technology. Recombinant production enables unrivalled batch-to-batch consistency, easy scale-up, and future security of supply.

Matched antibody pairs are designed for use in a variety of assays and platforms that require matched antibody pairs.

Antibody use should be optimized for each application and assay.

Storage

Storage:
Store at -80°C.
Storage buffer:
PBS only

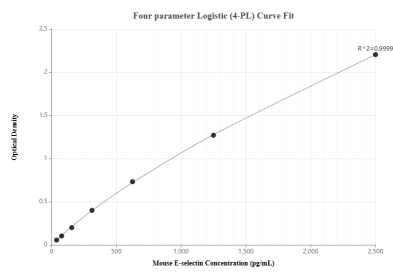
For technical support and original validation data for this product please contact:

T: 1 (888) 4PTGLAB (1-888-478-4522) (toll free
in USA), or 1(312) 455-8498 (outside USA)

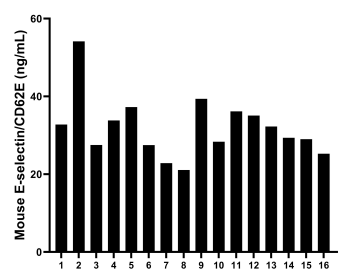
E: proteintech@ptglab.com
W: ptglab.com

**This product is exclusively available under Proteintech
Group brand and is not available to purchase from any
other manufacturer.**

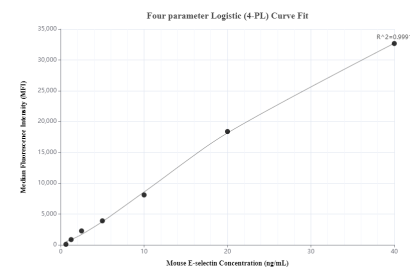
Selected Validation Data



Sandwich ELISA standard curve of MP00720-3, Mouse E-selectin / CD62E Recombinant Matched Antibody Pair - PBS only. 83720-4-PBS was coated to a plate as the capture antibody and incubated with serial dilutions of standard Eg0610. 83720-1-PBS was HRP conjugated as the detection antibody. Range: 39.1-2500 pg/mL



Serum of sixteen mice was measured. The E-selectin concentration of detected samples was determined to be 32.0 ng/mL with a range of 21.1 - 54.1 ng/mL.



Cytometric bead array standard curve of MP00720-3, MOUSE E-selectin/CD62E Recombinant Matched Antibody Pair, PBS Only. Capture antibody: 83720-4-PBS. Detection antibody: 83720-1-PBS. Standard: Eg0610. Range: 0.625-40 ng/mL