

BAG3 Recombinant Matched Antibody Pair, PBS Only

Catalog Number: MP00740-1

Capture Antibody Information

Catalog Number:
83779-1-PBS

Host:
Rabbit

Isotype:
IgG

Purification Method:
Protein A purification

Clone ID:
240860C9

Reactivity:
human

Immunogen Catalog Number:
Ag0956

Conjugate:
Unconjugated

Full name:
BCL2-associated athanogene 3

Gene ID:
9531

Detection Antibody Information

Catalog Number:
83779-2-PBS

Host:
Rabbit

Isotype:
IgG

Purification Method:
Protein A purification

Clone ID:
240860D12

Reactivity:
human

GenBank:
BC006418

Immunogen Catalog Number:
Ag0956

Conjugate:
Unconjugated

Full name:
BCL2-associated athanogene 3

Gene ID:
9531

Applications

Tested Applications:
Cytometric bead array, Sandwich
ELISA

Range:
0.313-40 ng/mL (Cytometric Bead
Array)
125-8000 pg/mL (Sandwich ELISA)

Recommended Dilutions:
It is recommended that this reagent
should be titrated in each testing
system to obtain optimal results.

Product Information

MP00740-1 targets BAG3 in immunoassays as a matched antibody pair. Validated in Cytometric bead array, Sandwich ELISA.

Capture antibody: BAG3 Recombinant antibody, PBS Only (Capture) 83779-1-PBS (240860C9). 100 µg. Concentration 1 mg/mL.

Detection antibody: BAG3 Recombinant antibody, PBS Only (Detector) 83779-2-PBS (240860D12). 100 µg. Concentration 1 mg/mL.

Unconjugated rabbit recombinant monoclonal antibody pair in PBS only storage buffer at a concentration of 1 mg/mL, ready for conjugation. Created using Proteintech's proprietary in-house recombinant technology. Recombinant production enables unrivalled batch-to-batch consistency, easy scale-up, and future security of supply.

Matched antibody pairs are designed for use in a variety of assays and platforms that require matched antibody pairs.

Antibody use should be optimized for each application and assay.

Storage

Storage:
Store at -80°C.
Storage buffer:
PBS only

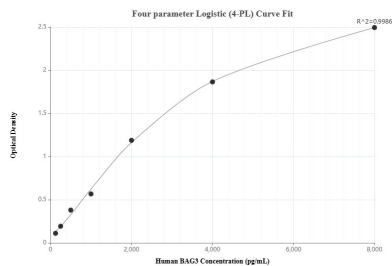
For technical support and original validation data for this product please contact:

T: 1 (888) 4PTGLAB (1-888-478-4522) (toll free
in USA), or 1(312) 455-8498 (outside USA)

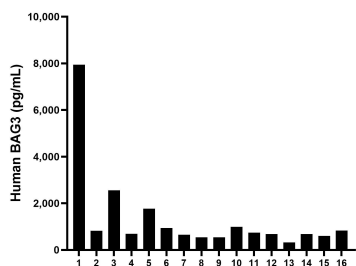
E: proteintech@ptglab.com
W: ptglab.com

This product is exclusively available under Proteintech Group brand and is not available to purchase from any other manufacturer.

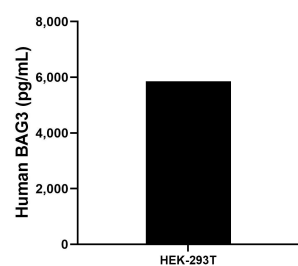
Selected Validation Data



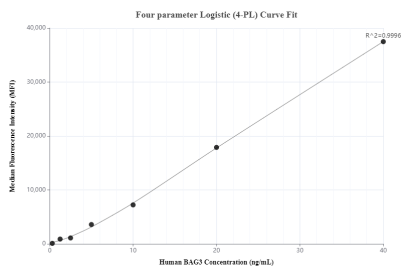
Sandwich ELISA standard curve of MP00740-1, Human BAG3 Recombinant Matched Antibody Pair - PBS only. 83779-1-PBS was coated to a plate as the capture antibody and incubated with serial dilutions of standard Ag0956. 83779-2-PBS was HRP conjugated as the detection antibody. Range: 125-8000 pg/mL



Plasma of sixteen individual healthy human donors was measured. The human BAG3 concentration of detected samples was determined to be 1,332.2 pg/mL with a range of 324.4 - 7,946.1 pg/mL



The mean BAG3 concentration was determined to be 5,853.6 /mL in HEK-293T cell extract based on a 1.4 mg/mL extract load.



Cytometric bead array standard curve of MP00740-1, BAG3 Recombinant Matched Antibody Pair, PBS Only. Capture antibody: 83779-1-PBS. Detection antibody: 83779-2-PBS. Standard: Ag0956. Range: 0.313-40 ng/mL