

Fibrillin 1 Recombinant Matched Antibody Pair, PBS Only

Catalog Number: **MP00807-1**

Capture Antibody Information

Catalog Number:

83836-2-PBS

Host:

Rabbit

Isotype:

IgG

Purification Method:

Protein A purification

Clone ID:

240960E11

Reactivity:

human

Immunogen Catalog Number:

Ag30283

Conjugate:

Unconjugated

Full name:

fibrillin 1

Gene ID:

2200

Detection Antibody Information

Catalog Number:

83836-1-PBS

Host:

Rabbit

Isotype:

IgG

Purification Method:

Protein A purification

Clone ID:

240960E5

Reactivity:

human

GenBank:

BC146854

Immunogen Catalog Number:

Ag30283

Conjugate:

Unconjugated

Full name:

fibrillin 1

Gene ID:

2200

Applications

Tested Applications:

Cytometric bead array, Sandwich ELISA

Range:

0.313-40 ng/mL (Cytometric Bead Array)
62.5-4000 pg/mL (Sandwich ELISA)

Recommended Dilutions:

It is recommended that this reagent should be titrated in each testing system to obtain optimal results.

Product Information

MP00807-1 targets Fibrillin 1 in immunoassays as a matched antibody pair. Validated in Cytometric bead array, Sandwich ELISA.

Capture antibody: Fibrillin 1 Recombinant antibody, PBS Only (Capture) 83836-2-PBS (240960E11). 100 µg. Concentration 1 mg/mL.

Detection antibody: Fibrillin 1 Recombinant antibody, PBS Only (Detector) 83836-1-PBS (240960E5). 100 µg. Concentration 1 mg/mL.

Alternative Fibrillin 1 matched antibody pairs: MP00807-2

Unconjugated rabbit recombinant monoclonal antibody pair in PBS only storage buffer at a concentration of 1 mg/mL, ready for conjugation. Created using Proteintech's proprietary in-house recombinant technology. Recombinant production enables unrivalled batch-to-batch consistency, easy scale-up, and future security of supply.

Matched antibody pairs are designed for use in a variety of assays and platforms that require matched antibody pairs.

Antibody use should be optimized for each application and assay.

Storage

Storage:

Store at -80°C.

Storage buffer:

PBS only

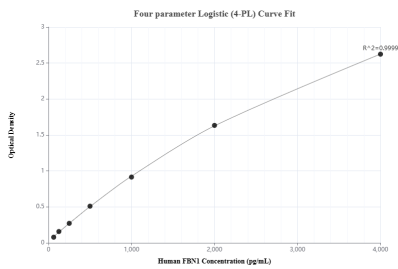
For technical support and original validation data for this product please contact:

T: 1 (888) 4PTGLAB (1-888-478-4522) (toll free in USA), or 1(312) 455-8498 (outside USA)

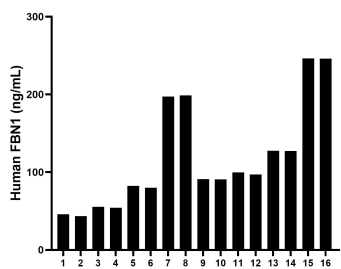
E: proteintech@ptglab.com
W: ptglab.com

This product is exclusively available under Proteintech Group brand and is not available to purchase from any other manufacturer.

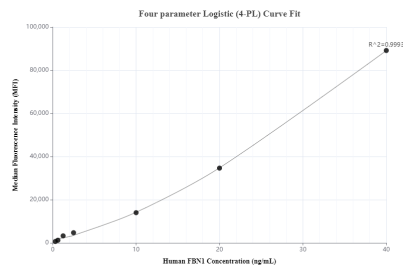
Selected Validation Data



Sandwich ELISA standard curve of MP00807-1, Human Fibrillin 1/FBN1 Recombinant Matched Antibody Pair - PBS only. 83836-2-PBS was coated to a plate as the capture antibody and incubated with serial dilutions of standard Ag30283. 83836-1-PBS was HRP conjugated as the detection antibody. Range: 62.5-4000 pg/mL



Serum of sixteen individual healthy human donors was measured. The human Fibrillin 1/FBN1 concentration of detected samples was determined to be 117.73 ng/mL with a range of 43.48 - 246.44 ng/mL



Cytometric bead array standard curve of MP00807-1, Fibrillin 1/FBN1 Recombinant Matched Antibody Pair, PBS Only. Capture antibody: 83836-2-PBS. Detection antibody: 83836-1-PBS. Standard: Ag30283. Range: 0.313-40 ng/mL