

S1PR2 Recombinant Matched Antibody Pair, PBS Only

Catalog Number: **MP00831-1**

Capture Antibody Information

Catalog Number:
83881-2-PBS

Host:
Rabbit

Isotype:
IgG

Purification Method:
Protein A purification

Clone ID:
241067H8

Reactivity:
human

Immunogen Catalog Number:
Ag15470

Conjugate:
Unconjugated

Full name:
sphingosine-1-phosphate receptor 2

Gene ID:
9294

Detection Antibody Information

Catalog Number:
83881-1-PBS

Host:
Rabbit

Isotype:
IgG

Purification Method:
Protein A purification

Clone ID:
241067B10

Reactivity:
human

GenBank:
BC069598

Immunogen Catalog Number:
Ag15470

Conjugate:
Unconjugated

Full name:
sphingosine-1-phosphate receptor 2

Gene ID:
9294

Applications

Tested Applications:
Cytometric bead array, Sandwich ELISA

Range:
3.125-100 ng/mL (Cytometric Bead Array)
1.56-100 ng/mL (Sandwich ELISA)

Recommended Dilutions:
It is recommended that this reagent should be titrated in each testing system to obtain optimal results.

Product Information

MP00831-1 targets S1PR2 in immunoassays as a matched antibody pair. Validated in Cytometric bead array, Sandwich ELISA.

Capture antibody: S1PR2 Recombinant antibody, PBS Only (Capture) 83881-2-PBS (241067H8). 100 µg. Concentration 1 mg/mL.

Detection antibody: S1PR2 Recombinant antibody, PBS Only (Detector) 83881-1-PBS (241067B10). 100 µg. Concentration 1 mg/mL.

Unconjugated rabbit recombinant monoclonal antibody pair in PBS only storage buffer at a concentration of 1 mg/mL, ready for conjugation. Created using Proteintech's proprietary in-house recombinant technology. Recombinant production enables unrivalled batch-to-batch consistency, easy scale-up, and future security of supply.

Matched antibody pairs are designed for use in a variety of assays and platforms that require matched antibody pairs.

Antibody use should be optimized for each application and assay.

Storage

Storage:
Store at -80°C.

Storage buffer:
PBS only

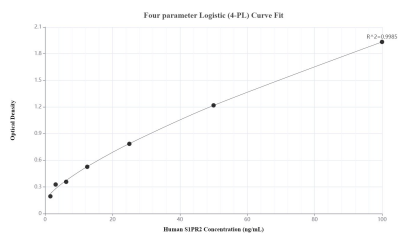
For technical support and original validation data for this product please contact:

T: 1 (888) 4PTGLAB (1-888-478-4522) (toll free in USA), or 1(312) 455-8498 (outside USA)

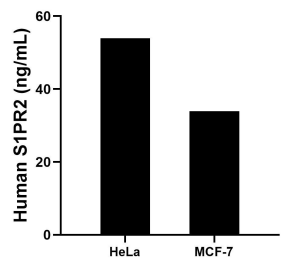
E: proteintech@ptglab.com
W: ptglab.com

This product is exclusively available under Proteintech Group brand and is not available to purchase from any other manufacturer.

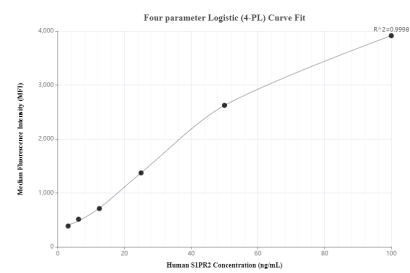
Selected Validation Data



Sandwich ELISA standard curve of MP00831-1, Human S1PR2 Recombinant Matched Antibody Pair - PBS only. 83881-2-PBS was coated to a plate as the capture antibody and incubated with serial dilutions of standard Ag15470. 83881-1-PBS was HRP conjugated as the detection antibody. Range: 1.56-100 ng/mL.



The mean S1PR2 concentration was determined to be 53.98 ng/mL in HeLa cell extract based on a 1.20 mg/mL extract load and 33.91 ng/mL in MCF-7 cell extract based on a 1.20 mg/mL extract load.



Cytometric bead array standard curve of MP00831-1, S1PR2 Recombinant Matched Antibody Pair, PBS Only. Capture antibody: 83881-2-PBS. Detection antibody: 83881-1-PBS. Standard: Ag15470. Range: 3.125-100 ng/mL.