

For Research Use Only

# Mouse CD200R1 Recombinant Matched Antibody Pair, PBS Only



Catalog Number:MP00835-3

## Capture Antibody Information

Catalog Number:

83889-9-PBS

Host:

Rabbit

Isotype:

IgG

Purification Method:

Protein A purification

Clone ID:

252758D6

Reactivity:

mouse

Immunogen Catalog Number:

Eg0988

Conjugate:

Unconjugated

Full name:

CD200 receptor 1

Gene ID:

57781

## Detection Antibody Information

Catalog Number:

83889-8-PBS

Host:

Rabbit

Isotype:

IgG

Purification Method:

Protein A purification

Clone ID:

252758G1

Reactivity:

mouse

GenBank:

NM\_021325.3

Immunogen Catalog Number:

Eg0988

Conjugate:

Unconjugated

Full name:

CD200 receptor 1

Gene ID:

57781

## Applications

Tested Applications:

Cytometric bead array

Range:

0.078-10 ng/mL (Cytometric Bead Array)

Recommended Dilutions:

It is recommended that this reagent should be titrated in each testing system to obtain optimal results.

## Product Information

MP00835-3 targets CD200R1 in immunoassays as a matched antibody pair. Validated in Cytometric bead array.

Capture antibody: Mouse CD200R1 Recombinant monoclonal antibody, PBS Only (Capture) 83889-9-PBS (252758D6). 100 µg. Concentration 1 mg/mL.

Detection antibody: Mouse CD200R1 Recombinant monoclonal antibody, PBS Only (Detector) 83889-8-PBS (252758G1). 100 µg. Concentration 1 mg/mL.

Unconjugated rabbit recombinant monoclonal antibody pair in PBS only storage buffer at a concentration of 1 mg/mL, ready for conjugation. Created using Proteintech's proprietary in-house recombinant technology. Recombinant production enables unrivalled batch-to-batch consistency, easy scale-up, and future security of supply.

Matched antibody pairs are designed for use in a variety of assays and platforms that require matched antibody pairs.

Antibody use should be optimized for each application and assay.

## Storage

Storage:

Store at -80°C.

Storage buffer:

PBS only

For technical support and original validation data for this product please contact:

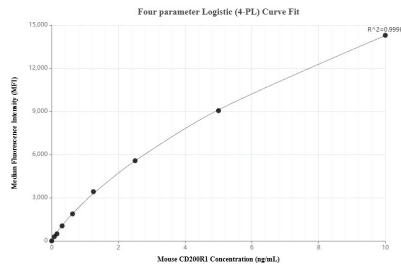
T: 1 (888) 4PTGLAB (1-888-478-4522) (toll free in USA), or 1(312) 455-8498 (outside USA)

E: [proteintech@ptglab.com](mailto:proteintech@ptglab.com)

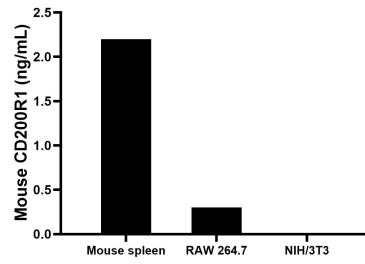
W: [ptglab.com](http://ptglab.com)

This product is exclusively available under Proteintech Group brand and is not available to purchase from any other manufacturer.

## Selected Validation Data



Cytometric bead array standard curve of MP00835-3, MOUSE CD200R1 Recombinant Matched Antibody Pair, PBS Only. Capture antibody: 83889-9-PBS. Detection antibody: 83889-8-PBS. Standard: Eg0988. Range: 0.078-10 ng/mL



The mean CD200R1 concentration was determined to be 2.2 ng/mL in mouse spleen tissue extract based on a 1.2 mg/mL extract load, 0.3 ng/mL in RAW 264.7 cell extract based on a 1.2 mg/mL extract load, NIH/3T3 cell extract were served as a negative control.