

CD25/IL-2RA Recombinant Matched Antibody Pair, PBS Only

Catalog Number: **MP00837-3**

Capture Antibody Information

Catalog Number:
83896-5-PBS

Host:
Rabbit

Isotype:
IgG

Purification Method:
Protein A purification

Clone ID:
240906E5

Reactivity:
human

Conjugate:
Unconjugated

Full name:
interleukin 2 receptor, alpha

Gene ID:
3559

Detection Antibody Information

Catalog Number:
83896-6-PBS

Host:
Rabbit

Isotype:
IgG

Purification Method:
Protein A purification

Clone ID:
240906D7

Reactivity:
human

GenBank:
BC156627

Conjugate:
Unconjugated

Full name:
interleukin 2 receptor, alpha

Gene ID:
3559

Applications

Tested Applications:
Sandwich ELISA

Range:
31.25-2000 pg/mL (Sandwich ELISA)

Recommended Dilutions:
It is recommended that this reagent should be titrated in each testing system to obtain optimal results.

Product Information

MP00837-3 targets CD25/IL-2RA in immunoassays as a matched antibody pair. Validated in Sandwich ELISA.

Capture antibody: CD25/IL-2RA Recombinant antibody, PBS Only (Capture) 83896-5-PBS (240906E5). 100 µg. Concentration 1 mg/mL.

Detection antibody: CD25/IL-2RA Recombinant antibody, PBS Only (Detector) 83896-6-PBS (240906D7). 100 µg. Concentration 1 mg/mL.

Unconjugated rabbit recombinant monoclonal antibody pair in PBS only storage buffer at a concentration of 1 mg/mL, ready for conjugation. Created using Proteintech's proprietary in-house recombinant technology. Recombinant production enables unrivalled batch-to-batch consistency, easy scale-up, and future security of supply.

Matched antibody pairs are designed for use in a variety of assays and platforms that require matched antibody pairs.

Antibody use should be optimized for each application and assay.

Storage

Storage:
Store at -80°C.
Storage buffer:
PBS only

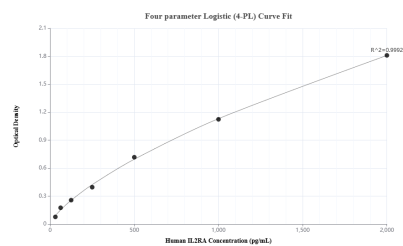
For technical support and original validation data for this product please contact:

T: 1 (888) 4PTGLAB (1-888-478-4522) (toll free in USA), or 1(312) 455-8498 (outside USA)

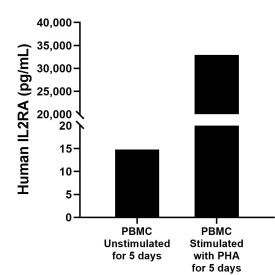
E: proteintech@ptglab.com
W: ptglab.com

This product is exclusively available under Proteintech Group brand and is not available to purchase from any other manufacturer.

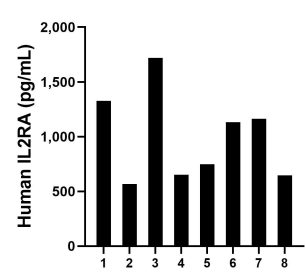
Selected Validation Data



Sandwich ELISA standard curve of MP00837-3, Human CD25/IL-2RA Recombinant Matched Antibody Pair - PBS only. 83896-5-PBS was coated to a plate as the capture antibody and incubated with serial dilutions of standard Eg0408. 83896-6-PBS was HRP conjugated as the detection antibody. Range: 31.25-2000 pg/mL



Human peripheral blood mononuclear cells (5×10^6 cells/mL) were cultured in DMEM supplemented with 5% fetal bovine serum, 50 μ M β -mercaptoethanol, 2 mM L-glutamine, 100 U/mL penicillin, and 100 μ g/mL streptomycin sulfate. The cells were cultured unstimulated or stimulated with 10 μ g/mL PHA for 5 days. Aliquots of the cell culture supernates were removed and assayed for levels of human CD25/IL-2RA.



Serum of eight individual healthy human donors was measured. The human CD25/IL-2RA concentration of detected samples was determined to be 993.9 pg/mL with a range of 567.3 - 1,718.0 pg/mL.