

# Mouse Tissue Factor Recombinant Matched Antibody Pair, PBS Only

Catalog Number: **MP00859-1**

## Capture Antibody Information

<b>Catalog Number:</b> 83887-1-PBS	<b>Clone ID:</b> 240875A2	<b>Conjugate:</b> Unconjugated
<b>Host:</b> Rabbit	<b>Reactivity:</b> mouse	<b>Full name:</b> coagulation factor III
<b>Isotype:</b> IgG	<b>Immunogen Catalog Number:</b> Eg1102	<b>Gene ID:</b> 14066
<b>Purification Method:</b> Protein A purification		

## Detection Antibody Information

<b>Catalog Number:</b> 83887-4-PBS	<b>Clone ID:</b> 240875H3	<b>Conjugate:</b> Unconjugated
<b>Host:</b> Rabbit	<b>Reactivity:</b> human, mouse, rat	<b>Full name:</b> coagulation factor III
<b>Isotype:</b> IgG	<b>GenBank:</b>	<b>Gene ID:</b> 14066
<b>Purification Method:</b> Protein A purification	<b>Immunogen Catalog Number:</b> Eg1102	

## Applications

<b>Tested Applications:</b> Cytometric bead array, Sandwich ELISA	<b>Range:</b> 0.313-40 ng/mL (Cytometric Bead Array) 7.8-500 pg/mL (Sandwich ELISA)	<b>Recommended Dilutions:</b> It is recommended that this reagent should be titrated in each testing system to obtain optimal results.
--	---	---

## Product Information

MP00859-1 targets Tissue Factor in immunoassays as a matched antibody pair. Validated in Cytometric bead array, Sandwich ELISA.

Capture antibody: Mouse Coagulation Factor III/Tissue Factor Recombinant antibody, PBS Only (Capture) 83887-1-PBS (240875A2). 100 µg. Concentration 1 mg/mL.

Detection antibody: Mouse Tissue Factor Recombinant antibody, PBS Only (Capture/Detector) 83887-4-PBS (240875H3). 100 µg. Concentration 1 mg/mL.

Unconjugated rabbit recombinant monoclonal antibody pair in PBS only storage buffer at a concentration of 1 mg/mL, ready for conjugation. Created using Proteintech's proprietary in-house recombinant technology. Recombinant production enables unrivalled batch-to-batch consistency, easy scale-up, and future security of supply.

Matched antibody pairs are designed for use in a variety of assays and platforms that require matched antibody pairs.

Antibody use should be optimized for each application and assay.

## Storage

**Storage:**  
Store at -80°C.  
**Storage buffer:**  
PBS only

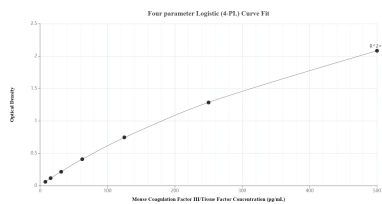
For technical support and original validation data for this product please contact:

T: 1 (888) 4PTGLAB (1-888-478-4522) (toll free in USA), or 1(312) 455-8498 (outside USA)

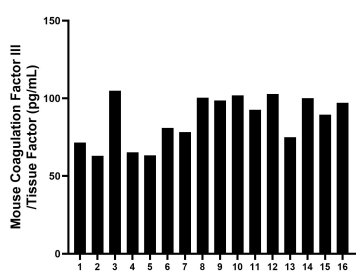
E: [proteintech@ptglab.com](mailto:proteintech@ptglab.com)  
W: [ptglab.com](http://ptglab.com)

**This product is exclusively available under Proteintech Group brand and is not available to purchase from any other manufacturer.**

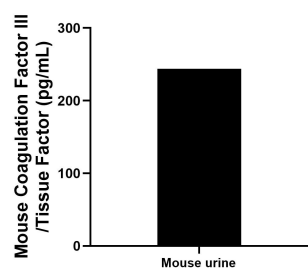
Selected Validation Data



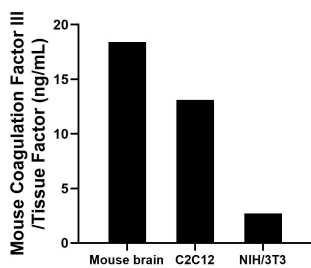
Sandwich ELISA standard curve of MP00859-1, Mouse Tissue Factor Recombinant Matched Antibody Pair - PBS only. 83887-1-PBS was coated to a plate as the capture antibody and incubated with serial dilutions of standard Eg1102. 83887-4-PBS was HRP conjugated as the detection antibody. Range: 7.8-500 pg/mL



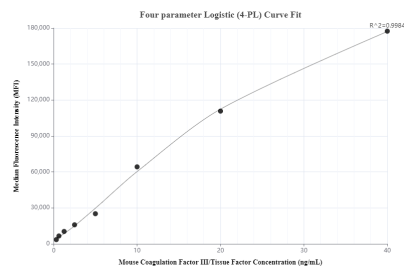
Serum of sixteen mice was measured. The Tissue Factor concentration of detected samples was determined to be 86.6 pg/mL with a range of 63.0-105.0 pg/mL



Urine of mice was measured. The Tissue Factor concentration of detected samples was determined to be 244.1 pg/mL



The mean Tissue Factor concentration was determined to be 18.4 ng/mL in mouse brain tissue extract based on a 6.0 mg/mL extract load, 13.1 ng/mL in C2C12 cell extract based on a 3.6 mg/mL extract load and 2.7 ng/mL in NIH/3T3 cell extract based on a 10.6 mg/mL extract load.



Cytometric bead array standard curve of MP00859-1, MOUSE Tissue Factor Recombinant Matched Antibody Pair, PBS Only. Capture antibody: 83887-1-PBS. Detection antibody: 83887-4-PBS. Standard: Eg1102. Range: 0.313-40 ng/mL