

# Mouse Serpin E1/PAI-1 Recombinant Matched Antibody Pair, PBS Only

Catalog Number: **MP00875-4**

## Capture Antibody Information

Catalog Number:  
83980-2-PBS  
Host:  
Rabbit  
Isotype:  
IgG  
Purification Method:  
Protein A purification

Clone ID:  
241130G3  
Reactivity:  
mouse

Conjugate:  
Unconjugated  
Full name:  
serine (or cysteine) peptidase inhibitor, clade E, member 1  
Gene ID:  
18787

## Detection Antibody Information

Catalog Number:  
83980-3-PBS  
Host:  
Rabbit  
Isotype:  
IgG  
Purification Method:  
Protein A purification

Clone ID:  
241130G6  
Reactivity:  
mouse  
GenBank:

Conjugate:  
Unconjugated  
Full name:  
serine (or cysteine) peptidase inhibitor, clade E, member 1  
Gene ID:  
18787

## Applications

Tested Applications:  
Sandwich ELISA

Range:  
19.5-1250 pg/mL (Sandwich ELISA)

Recommended Dilutions:  
It is recommended that this reagent should be titrated in each testing system to obtain optimal results.

## Product Information

MP00875-4 targets Serpin E1/PAI-1 in immunoassays as a matched antibody pair. Validated in Sandwich ELISA.

Capture antibody: Mouse Serpin E1/PAI-1 Recombinant antibody, PBS Only (Capture/Detector) 83980-2-PBS (241130G3). 100 µg. Concentration 1 mg/mL.

Detection antibody: Mouse Serpin E1/PAI-1 Recombinant antibody, PBS Only (Capture/Detector) 83980-3-PBS (241130G6). 100 µg. Concentration 1 mg/mL.

Unconjugated rabbit recombinant monoclonal antibody pair in PBS only storage buffer at a concentration of 1 mg/mL, ready for conjugation. Created using Proteintech's proprietary in-house recombinant technology. Recombinant production enables unrivalled batch-to-batch consistency, easy scale-up, and future security of supply.

Matched antibody pairs are designed for use in a variety of assays and platforms that require matched antibody pairs.

Antibody use should be optimized for each application and assay.

## Storage

Storage:  
Store at -80°C.  
Storage buffer:  
PBS only

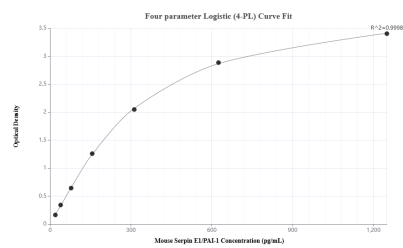
For technical support and original validation data for this product please contact:

T: 1 (888) 4PTGLAB (1-888-478-4522) (toll free in USA), or 1(312) 455-8498 (outside USA)

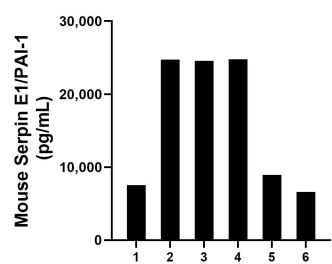
E: [proteintech@ptglab.com](mailto:proteintech@ptglab.com)  
W: [ptglab.com](http://ptglab.com)

This product is exclusively available under Proteintech Group brand and is not available to purchase from any other manufacturer.

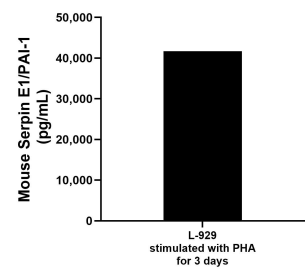
## Selected Validation Data



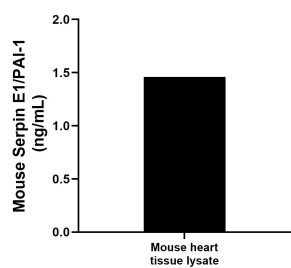
Sandwich ELISA standard curve of MP00875-4, Mouse Serpin E1/PAI-1 Recombinant Matched Antibody Pair - PBS only. 83980-2-PBS was coated to a plate as the capture antibody and incubated with serial dilutions of standard Eg1100. 83980-3-PBS was HRP conjugated as the detection antibody. Range: 19.5-1250 pg/mL



Serum of six mice was measured. The mouse Serpin E1/PAI-1 concentration of detected samples was determined to be 16,187.9 pg/mL with a range of 6,614.7 - 24,758.6 pg/mL.



L-929 mouse fibroblast cells ( $1 \times 10^6$  cells/mL) were cultured for 3 days in MEM supplemented with 10% equine serum and stimulated with 10  $\mu$ g/mL PHA. The cell culture supernatants was assayed for mouse Serpin E1/PAI-1 and measured 41,666.9 pg/mL.



Mouse heart tissue lyaste was measured. The mouse Serpin E1/PAI-1 concentration of detected samples was determined to be 1.46 ng/mL (based on a 4.6 mg/mL extract load).