

PI16 Recombinant Matched Antibody Pair, PBS Only

Catalog Number: **MP00888-4**

Capture Antibody Information

Catalog Number: 83985-3-PBS	Clone ID: 241014D7	Conjugate: Unconjugated
Host: Rabbit	Reactivity: human	Full name: peptidase inhibitor 16
Isotype: IgG	Immunogen Catalog Number: Ag2925	Gene ID: 221476
Purification Method: Protein A purification		

Detection Antibody Information

Catalog Number: 83985-7-PBS	Clone ID: 241014F6	Conjugate: Unconjugated
Host: Rabbit	Reactivity: human	Full name: peptidase inhibitor 16
Isotype: IgG	GenBank: BC022399	Gene ID: 221476
Purification Method: Protein A purification	Immunogen Catalog Number: Ag2925	

Applications

Tested Applications: Sandwich ELISA	Range: 0.781-50 ng/mL (Sandwich ELISA)	Recommended Dilutions: It is recommended that this reagent should be titrated in each testing system to obtain optimal results.
---	--	---

Product Information

MP00888-4 targets PI16 in immunoassays as a matched antibody pair. Validated in Sandwich ELISA.

Capture antibody: PI16 Recombinant antibody, PBS Only (Capture) 83985-3-PBS (241014D7). 100 µg. Concentration 1 mg/mL.

Detection antibody: PI16 Recombinant antibody, PBS Only (Detector) 83985-7-PBS (241014F6). 100 µg. Concentration 1 mg/mL.

Unconjugated rabbit recombinant monoclonal antibody pair in PBS only storage buffer at a concentration of 1 mg/mL, ready for conjugation. Created using Proteintech's proprietary in-house recombinant technology. Recombinant production enables unrivalled batch-to-batch consistency, easy scale-up, and future security of supply.

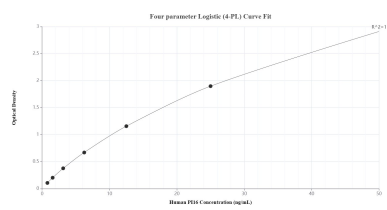
Matched antibody pairs are designed for use in a variety of assays and platforms that require matched antibody pairs.

Antibody use should be optimized for each application and assay.

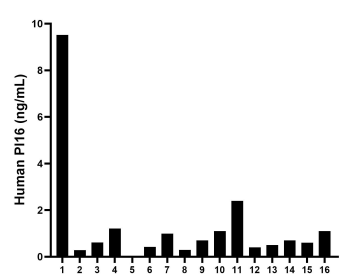
Storage

Storage:
Store at -80°C.
Storage buffer:
PBS only

Selected Validation Data



Sandwich ELISA standard curve of MP00888-4, Human PI16 Recombinant Matched Antibody Pair - PBS only. 83985-3-PBS was coated to a plate as the capture antibody and incubated with serial dilutions of standard Ag2925. 83985-7-PBS was HRP conjugated as the detection antibody. Range: 0.781-50 ng/mL



Serum of sixteen individual healthy human donors was measured. The PI16 concentration of detected samples was determined to be 1.30 ng/mL with a range of 0.01-9.52 ng/mL.