

# SNAT2 Recombinant Matched Antibody Pair, PBS Only

Catalog Number: **MP00889-3**

## Capture Antibody Information

**Catalog Number:**

83968-4-PBS

**Host:**

Rabbit

**Isotype:**

IgG

**Purification Method:**

Protein A purification

**Clone ID:**

241059G7

**Reactivity:**

human

**Immunogen Catalog Number:**

Ag23082

**Conjugate:**

Unconjugated

**Full name:**

solute carrier family 38, member 2

**Gene ID:**

54407

## Detection Antibody Information

**Catalog Number:**

83968-3-PBS

**Host:**

Rabbit

**Isotype:**

IgG

**Purification Method:**

Protein A purification

**Clone ID:**

241059G3

**Reactivity:**

human

**GenBank:**

BC040342

**Immunogen Catalog Number:**

Ag23082

**Conjugate:**

Unconjugated

**Full name:**

solute carrier family 38, member 2

**Gene ID:**

54407

## Applications

**Tested Applications:**

Cytometric bead array, Sandwich ELISA

**Range:**0.625-40 ng/mL (Cytometric Bead Array)  
19.5-1250 pg/mL (Sandwich ELISA)**Recommended Dilutions:**

It is recommended that this reagent should be titrated in each testing system to obtain optimal results.

## Product Information

MP00889-3 targets SNAT2 in immunoassays as a matched antibody pair. Validated in Cytometric bead array, Sandwich ELISA.

Capture antibody: SLC38A2 Recombinant antibody, PBS Only (Capture) 83968-4-PBS (241059G7). 100 µg. Concentration 1 mg/mL.

Detection antibody: SLC38A2 Recombinant antibody, PBS Only (Detector) 83968-3-PBS (241059G3). 100 µg. Concentration 1 mg/mL.

Unconjugated rabbit recombinant monoclonal antibody pair in PBS only storage buffer at a concentration of 1 mg/mL, ready for conjugation. Created using Proteintech's proprietary in-house recombinant technology. Recombinant production enables unrivalled batch-to-batch consistency, easy scale-up, and future security of supply.

Matched antibody pairs are designed for use in a variety of assays and platforms that require matched antibody pairs.

Antibody use should be optimized for each application and assay.

## Storage

**Storage:**

Store at -80°C.

**Storage buffer:**

PBS only

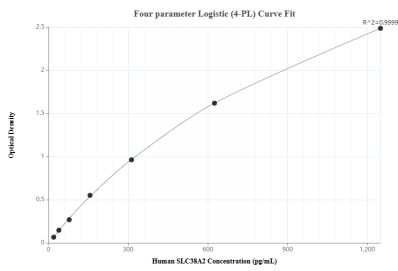
For technical support and original validation data for this product please contact:

T: 1 (888) 4PTGLAB (1-888-478-4522) (toll free in USA), or 1(312) 455-8498 (outside USA)

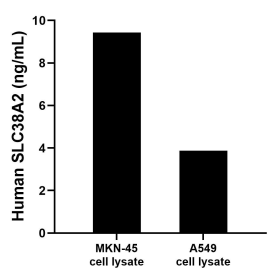
E: [proteintech@ptglab.com](mailto:proteintech@ptglab.com)  
W: [ptglab.com](http://ptglab.com)

This product is exclusively available under Proteintech Group brand and is not available to purchase from any other manufacturer.

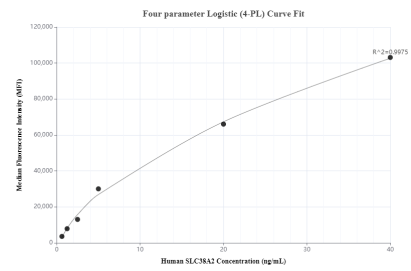
## Selected Validation Data



Sandwich ELISA standard curve of MP00889-3, Human SLC38A2 Recombinant Matched Antibody Pair - PBS only. 83968-4-PBS was coated to a plate as the capture antibody and incubated with serial dilutions of standard Ag23082. 83968-3-PBS was HRP conjugated as the detection antibody. Range: 19.5-1250 pg/mL



MKN-45 and A549 cell lysate were measured. The human SLC38A2 concentration of detected samples was determined to be 9.43 ng/mL (based on a 9.5 mg/mL extract load) in MKN-45 cell lysate and 3.88 ng/mL (based on a 1.0 mg/mL extract load) in A549 cell lysate.



Cytometric bead array standard curve of MP00889-3, SLC38A2 Recombinant Matched Antibody Pair, PBS Only. Capture antibody: 83968-4-PBS. Detection antibody: 83968-3-PBS. Standard: Ag23082. Range: 0.625-40 ng/mL