

GDF9 Recombinant Matched Antibody Pair, PBS Only

Catalog Number: **MP00911-1**

Capture Antibody Information

Catalog Number:
83956-2-PBS

Host:
Rabbit

Isotype:
IgG

Purification Method:
Protein A purification

Clone ID:
241011G3

Reactivity:
human

Immunogen Catalog Number:
Ag29603

Conjugate:
Unconjugated

Full name:
growth differentiation factor 9

Gene ID:
2661

Detection Antibody Information

Catalog Number:
83956-1-PBS

Host:
Rabbit

Isotype:
IgG

Purification Method:
Protein A purification

Clone ID:
241011A1

Reactivity:
human

GenBank:
BC096228

Immunogen Catalog Number:
Ag29603

Conjugate:
Unconjugated

Full name:
growth differentiation factor 9

Gene ID:
2661

Applications

Tested Applications:

Cytometric bead array, Sandwich
ELISA

Range:

0.781-100 ng/mL (Cytometric Bead
Array)
0.781-50 ng/mL (Sandwich ELISA)

Recommended Dilutions:

It is recommended that this reagent
should be titrated in each testing
system to obtain optimal results.

Product Information

MP00911-1 targets GDF9 in immunoassays as a matched antibody pair. Validated in Cytometric bead array, Sandwich ELISA.

Capture antibody: GDF9 Recombinant antibody, PBS Only (Capture) 83956-2-PBS (241011G3). 100 µg. Concentration 1 mg/mL.

Detection antibody: GDF9 Recombinant antibody, PBS Only (Detector) 83956-1-PBS (241011A1). 100 µg. Concentration 1 mg/mL.

Unconjugated rabbit recombinant monoclonal antibody pair in PBS only storage buffer at a concentration of 1 mg/mL, ready for conjugation. Created using Proteintech's proprietary in-house recombinant technology. Recombinant production enables unrivalled batch-to-batch consistency, easy scale-up, and future security of supply.

Matched antibody pairs are designed for use in a variety of assays and platforms that require matched antibody pairs.

Antibody use should be optimized for each application and assay.

Storage

Storage:

Store at -80°C.

Storage buffer:

PBS only

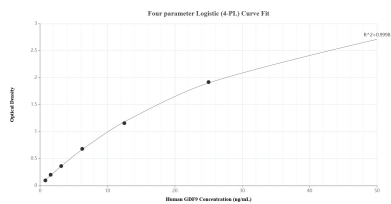
For technical support and original validation data for this product please contact:

T: 1 (888) 4PTGLAB (1-888-478-4522) (toll free
in USA), or 1(312) 455-8498 (outside USA)

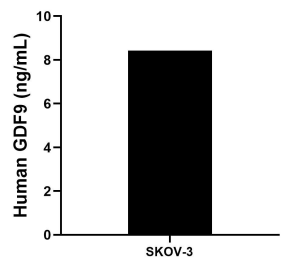
E: proteintech@ptglab.com
W: ptglab.com

This product is exclusively available under Proteintech Group brand and is not available to purchase from any other manufacturer.

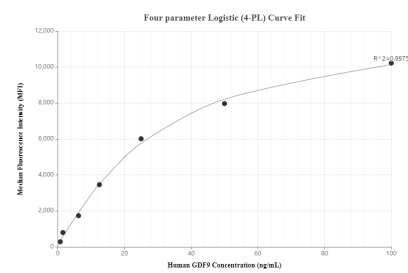
Selected Validation Data



Sandwich ELISA standard curve of MP00911-1, Human GDF9 Recombinant Matched Antibody Pair - PBS only. 83956-2-PBS was coated to a plate as the capture antibody and incubated with serial dilutions of standard Ag29603. 83956-1-PBS was HRP conjugated as the detection antibody. Range: 0.781-50 ng/mL



The mean GDF9 concentration was determined to be 8.42 ng/mL in SKOV-3 cell extract based on a 2.30 mg/mL extract load.



Cytometric bead array standard curve of MP00911-1, GDF9 Recombinant Matched Antibody Pair, PBS Only. Capture antibody: 83956-2-PBS. Detection antibody: 83956-1-PBS. Standard: Ag29603. Range: 0.781-100 ng/mL