

Mouse P-Selectin/CD62P

Recombinant Matched Antibody Pair, PBS Only

Catalog Number: **MP00926-2**

Capture Antibody Information

Catalog Number:
83947-1-PBS
Host:
Rabbit
Isotype:
IgG
Purification Method:
Protein A purification

Clone ID:
240766A1
Reactivity:
mouse

Conjugate:
Unconjugated
Full name:
selectin, platelet
Gene ID:
20344

Detection Antibody Information

Catalog Number:
83947-4-PBS
Host:
Rabbit
Isotype:
IgG
Purification Method:
Protein A purification

Clone ID:
240766G1
Reactivity:
mouse
GenBank:
NM_011347.2

Conjugate:
Unconjugated
Full name:
selectin, platelet
Gene ID:
20344

Applications

Tested Applications:
Cytometric bead array, Sandwich
ELISA

Range:
0.625-80 ng/mL (Cytometric Bead
Array)
19.5-1250 pg/mL (Sandwich ELISA)

Recommended Dilutions:
It is recommended that this reagent
should be titrated in each testing
system to obtain optimal results.

Product Information

MP00926-2 targets P-Selectin/CD62P in immunoassays as a matched antibody pair. Validated in Cytometric bead array, Sandwich ELISA.

Capture antibody: Mouse P-Selectin/CD62P Recombinant antibody, PBS Only (Capture/Detector) 83947-1-PBS (240766A1). 100 µg. Concentration 1 mg/mL.

Detection antibody: Mouse P-Selectin/CD62P Recombinant antibody, PBS Only (Detector) 83947-4-PBS (240766G1). 100 µg. Concentration 1 mg/mL.

Unconjugated rabbit recombinant monoclonal antibody pair in PBS only storage buffer at a concentration of 1 mg/mL, ready for conjugation. Created using Proteintech's proprietary in-house recombinant technology. Recombinant production enables unrivalled batch-to-batch consistency, easy scale-up, and future security of supply.

Matched antibody pairs are designed for use in a variety of assays and platforms that require matched antibody pairs.

Antibody use should be optimized for each application and assay.

Storage

Storage:
Store at -80°C.
Storage buffer:
PBS only

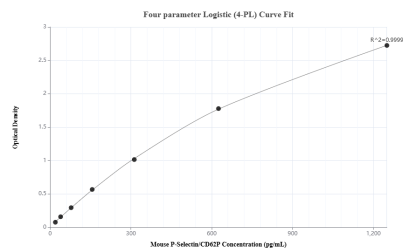
For technical support and original validation data for this product please contact:

T: 1 (888) 4PTGLAB (1-888-478-4522) (toll free
in USA), or 1(312) 455-8498 (outside USA)

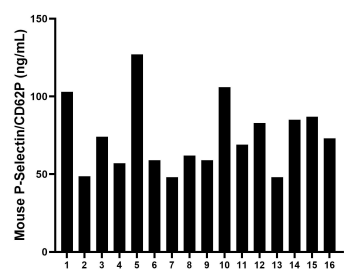
E: proteintech@ptglab.com
W: ptglab.com

This product is exclusively available under Proteintech Group brand and is not available to purchase from any other manufacturer.

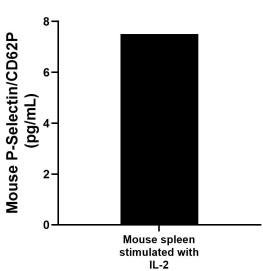
Selected Validation Data



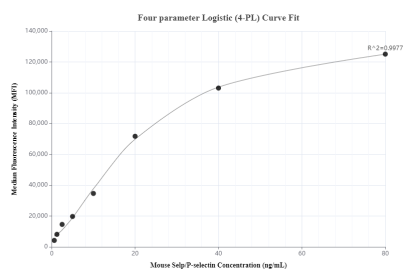
Sandwich ELISA standard curve of MP00926-2, Mouse P-Selectin/CD62P Recombinant Matched Antibody Pair - PBS only. 83947-1-PBS was coated to a plate as the capture antibody and incubated with serial dilutions of standard Eg0691. 83947-4-PBS was HRP conjugated as the detection antibody. Range: 19.5-1250 pg/mL



Serum of sixteen mice was measured. The mouse P-Selectin/CD62P concentration of detected samples was determined to be 74.29 ng/mL with a range of 48.00 - 127.00 ng/mL.



Mouse spleen cells (5×10^6 cells/mL) was cultured for 3 days in RPMI supplemented with 10% fetal bovine serum, 5 μ M β -mercaptoethanol, 2 mM L-glutamine, 100 U/mL penicillin, 100 μ g/mL streptomycin sulfate and stimulated with 10 ng/mL IL-2 for 3 days. An aliquot of the cell culture supernate was removed, assayed for mouse P-Selectin/CD62P, and measured 7.5 pg/mL.



Cytometric bead array standard curve of MP00926-2, MOUSE P-Selectin/CD62P Recombinant Matched Antibody Pair, PBS Only. Capture antibody: 83947-1-PBS. Detection antibody: 83947-4-PBS. Standard: Eg0691. Range: 0.625-80 ng/mL