

NFKB2 Recombinant Matched Antibody Pair, PBS Only

Catalog Number: MP00950-1

Capture Antibody Information

Catalog Number:
84022-4-PBS
Host:
Rabbit
Isotype:
IgG
Purification Method:
Protein A purification

Clone ID:
241126F8
Reactivity:
human
Immunogen Catalog Number:
Ag0662

Conjugate:
Unconjugated
Full name:
nuclear factor of kappa light polypeptide gene enhancer in B-cells 2 (p49/p100)
Gene ID:
4791

Detection Antibody Information

Catalog Number:
84022-2-PBS
Host:
Rabbit
Isotype:
IgG
Purification Method:
Protein A purification

Clone ID:
241126D8
Reactivity:
human
GenBank:
BC002844
Immunogen Catalog Number:
Ag0662

Conjugate:
Unconjugated
Full name:
nuclear factor of kappa light polypeptide gene enhancer in B-cells 2 (p49/p100)
Gene ID:
4791

Applications

Tested Applications:
Cytometric bead array, Sandwich ELISA

Range:
0.781-100 ng/mL (Cytometric Bead Array)
12.7-813 pg/mL (Sandwich ELISA)

Recommended Dilutions:
It is recommended that this reagent should be titrated in each testing system to obtain optimal results.

Product Information

MP00950-1 targets NFKB2 in immunoassays as a matched antibody pair. Validated in Cytometric bead array, Sandwich ELISA.

Capture antibody: NFKB2,p100 Recombinant antibody, PBS Only (Capture/Detector) 84022-4-PBS (241126F8). 100 µg. Concentration 1 mg/mL.

Detection antibody: NFKB2,p100 Recombinant antibody, PBS Only (Detector) 84022-2-PBS (241126D8). 100 µg. Concentration 1 mg/mL.

Unconjugated rabbit recombinant monoclonal antibody pair in PBS only storage buffer at a concentration of 1 mg/mL, ready for conjugation. Created using Proteintech's proprietary in-house recombinant technology. Recombinant production enables unrivalled batch-to-batch consistency, easy scale-up, and future security of supply.

Matched antibody pairs are designed for use in a variety of assays and platforms that require matched antibody pairs.

Antibody use should be optimized for each application and assay.

Storage

Storage:
Store at -80°C.
Storage buffer:
PBS only

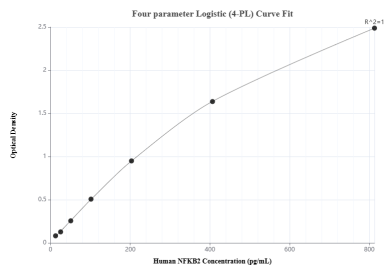
For technical support and original validation data for this product please contact:

T: 1 (888) 4PTGLAB (1-888-478-4522) (toll free in USA), or 1(312) 455-8498 (outside USA)

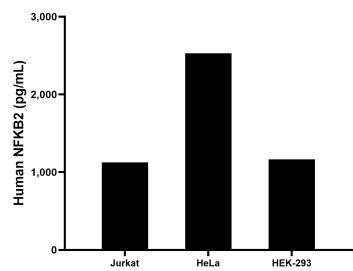
E: proteintech@ptglab.com
W: ptglab.com

This product is exclusively available under Proteintech Group brand and is not available to purchase from any other manufacturer.

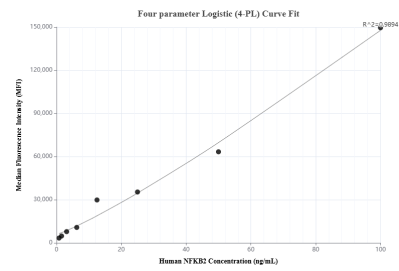
Selected Validation Data



Sandwich ELISA standard curve of MP00950-1, Human NFKB2 Recombinant Matched Antibody Pair - PBS only. 84022-4-PBS was coated to a plate as the capture antibody and incubated with serial dilutions of standard Ag0662. 84022-2-PBS was HRP conjugated as the detection antibody. Range: 12.7-813 pg/mL



The mean NFKB2 concentration was determined to be 1,125.5 pg/mL in Jurkat cell extract based on a 2.3 mg/mL extract load, 2,530.2 pg/mL in HeLa cell extract based on a 1.5 mg/mL extract load and 1,165.1 pg/mL in HEK-293 cell extract based on a 2.0 mg/mL extract load.



Cytometric bead array standard curve of MP00950-1, NFKB2 Recombinant Matched Antibody Pair, PBS Only. Capture antibody: 84022-4-PBS. Detection antibody: 84022-2-PBS. Standard: Ag0662. Range: 0.781-100 ng/mL