

# Siglec-8 Recombinant Matched Antibody Pair, PBS Only

Catalog Number: **MP00960-2**

## Capture Antibody Information

**Catalog Number:**  
84026-1-PBS  
**Host:**  
Rabbit  
**Isotype:**  
IgG  
**Purification Method:**  
Protein A purification

**Clone ID:**  
241275D7  
**Reactivity:**  
human

**Conjugate:**  
Unconjugated  
**Full name:**  
sialic acid binding Ig-like lectin 8  
**Gene ID:**  
27181

## Detection Antibody Information

**Catalog Number:**  
84026-4-PBS  
**Host:**  
Rabbit  
**Isotype:**  
IgG  
**Purification Method:**  
Protein A purification

**Clone ID:**  
241276C1  
**Reactivity:**  
human  
**GenBank:**  
BC053319

**Conjugate:**  
Unconjugated  
**Full name:**  
sialic acid binding Ig-like lectin 8  
**Gene ID:**  
27181

## Applications

**Tested Applications:**  
Cytometric bead array

**Range:**  
0.313-40 ng/mL (Cytometric Bead Array)

**Recommended Dilutions:**  
It is recommended that this reagent should be titrated in each testing system to obtain optimal results.

## Product Information

MP00960-2 targets Siglec-8 in immunoassays as a matched antibody pair. Validated in Cytometric bead array.

Capture antibody: Siglec-8 Recombinant antibody, PBS Only (Capture/Detector) 84026-1-PBS (241275D7). 100 µg. Concentration 1 mg/mL.

Detection antibody: Siglec-8 Recombinant antibody, PBS Only (Detector) 84026-4-PBS (241276C1). 100 µg. Concentration 1 mg/mL.

Alternative Siglec-8 matched antibody pairs: MP00960-1, MP00960-3, MP00960-4

Unconjugated rabbit recombinant monoclonal antibody pair in PBS only storage buffer at a concentration of 1 mg/mL, ready for conjugation. Created using Proteintech's proprietary in-house recombinant technology. Recombinant production enables unrivalled batch-to-batch consistency, easy scale-up, and future security of supply.

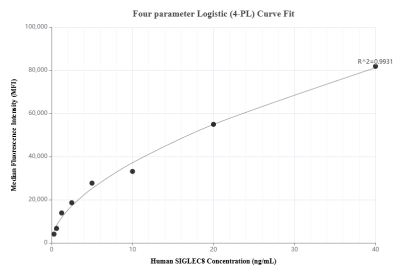
Matched antibody pairs are designed for use in a variety of assays and platforms that require matched antibody pairs.

Antibody use should be optimized for each application and assay.

## Storage

**Storage:**  
Store at -80°C.  
**Storage buffer:**  
PBS only

# Selected Validation Data



Cytometric bead array standard curve of MP00960-2, SIGLEC8 Recombinant Matched Antibody Pair, PBS Only. Capture antibody: 84026-1-PBS. Detection antibody: 84026-4-PBS. Standard: RP02311. Range: 0.313-40 ng/mL.