

Siglec-8 Recombinant Matched Antibody Pair, PBS Only

Catalog Number: **MP00960-4**

Capture Antibody Information

Catalog Number:

84026-2-PBS

Host:

Rabbit

Isotype:

IgG

Purification Method:

Protein A purification

Clone ID:

241276A8

Reactivity:

human

Conjugate:

Unconjugated

Full name:

sialic acid binding Ig-like lectin 8

Gene ID:

27181

Detection Antibody Information

Catalog Number:

84026-1-PBS

Host:

Rabbit

Isotype:

IgG

Purification Method:

Protein A purification

Clone ID:

241275D7

Reactivity:

human

GenBank:

BC053319

Conjugate:

Unconjugated

Full name:

sialic acid binding Ig-like lectin 8

Gene ID:

27181

Applications

Tested Applications:

Sandwich ELISA

Range:

0.313-20 ng/mL (Sandwich ELISA)

Recommended Dilutions:

It is recommended that this reagent should be titrated in each testing system to obtain optimal results.

Product Information

MP00960-4 targets Siglec-8 in immunoassays as a matched antibody pair. Validated in Sandwich ELISA.

Capture antibody: Siglec-8 Recombinant antibody, PBS Only (Capture) 84026-2-PBS (241276A8). 100 µg. Concentration 1 mg/mL.

Detection antibody: Siglec-8 Recombinant antibody, PBS Only (Capture/Detector) 84026-1-PBS (241275D7). 100 µg. Concentration 1 mg/mL.

Alternative Siglec-8 matched antibody pairs: MP00960-1, MP00960-2, MP00960-3

Unconjugated rabbit recombinant monoclonal antibody pair in PBS only storage buffer at a concentration of 1 mg/mL, ready for conjugation. Created using Proteintech's proprietary in-house recombinant technology. Recombinant production enables unrivalled batch-to-batch consistency, easy scale-up, and future security of supply.

Matched antibody pairs are designed for use in a variety of assays and platforms that require matched antibody pairs.

Antibody use should be optimized for each application and assay.

Storage

Storage:

Store at -80°C.

Storage buffer:

PBS only

For technical support and original validation data for this product please contact:

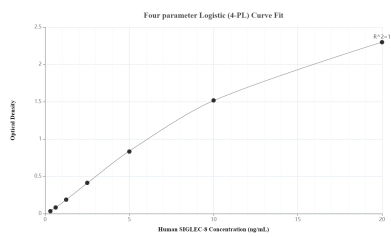
T: 1 (888) 4PTGLAB (1-888-478-4522) (toll free in USA), or 1(312) 455-8498 (outside USA)

E: proteintech@ptglab.com

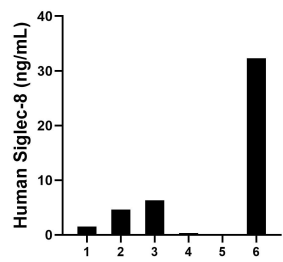
W: ptglab.com

This product is exclusively available under Proteintech Group brand and is not available to purchase from any other manufacturer.

Selected Validation Data



Sandwich ELISA standard curve of MP00960-4, Human Siglec-8 Recombinant Matched Antibody Pair - PBS only. 84026-2-PBS was coated to a plate as the capture antibody and incubated with serial dilutions of standard RP02311. 84026-1-PBS was HRP conjugated as the detection antibody. Range: 0.313-20 ng/mL



Serum of six individual healthy human donors was measured. The Siglec-8 concentration of detected samples was determined to be 7.56 ng/mL with a range of 0.19-32.32 ng/mL