

# KIF5A Recombinant Matched Antibody Pair, PBS Only

Catalog Number: **MP00967-4**

## Capture Antibody Information

**Catalog Number:**

84013-3-PBS

**Host:**

Rabbit

**Isotype:**

IgG

**Purification Method:**

Protein A purification

**Clone ID:**

241124F12

**Reactivity:**

human

**Immunogen Catalog Number:**

Ag15518

**Conjugate:**

Unconjugated

**Full name:**

kinesin family member 5A

**Gene ID:**

3798

## Detection Antibody Information

**Catalog Number:**

84013-6-PBS

**Host:**

Rabbit

**Isotype:**

IgG

**Purification Method:**

Protein A purification

**Clone ID:**

241124G5

**Reactivity:**

human

**GenBank:**

BC146670

**Immunogen Catalog Number:**

Ag15518

**Conjugate:**

Unconjugated

**Full name:**

kinesin family member 5A

**Gene ID:**

3798

## Applications

**Tested Applications:**

Sandwich ELISA

**Range:**

0.313-20 ng/mL (Sandwich ELISA)

**Recommended Dilutions:**

It is recommended that this reagent should be titrated in each testing system to obtain optimal results.

## Product Information

MP00967-4 targets KIF5A in immunoassays as a matched antibody pair. Validated in Sandwich ELISA.

Capture antibody: KIF5A Recombinant antibody, PBS Only (Capture/Detector) 84013-3-PBS (241124F12). 100 µg. Concentration 1 mg/mL.

Detection antibody: KIF5A Recombinant antibody, PBS Only (Detector) 84013-6-PBS (241124G5). 100 µg. Concentration 1 mg/mL.

Unconjugated rabbit recombinant monoclonal antibody pair in PBS only storage buffer at a concentration of 1 mg/mL, ready for conjugation. Created using Proteintech's proprietary in-house recombinant technology. Recombinant production enables unrivalled batch-to-batch consistency, easy scale-up, and future security of supply.

Matched antibody pairs are designed for use in a variety of assays and platforms that require matched antibody pairs.

Antibody use should be optimized for each application and assay.

## Storage

**Storage:**

Store at -80°C.

**Storage buffer:**

PBS only

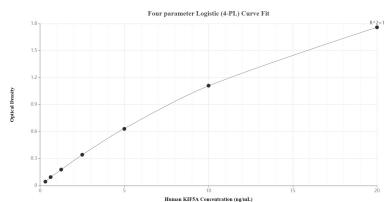
For technical support and original validation data for this product please contact:

T: 1 (888) 4PTGLAB (1-888-478-4522) (toll free in USA), or 1(312) 455-8498 (outside USA)

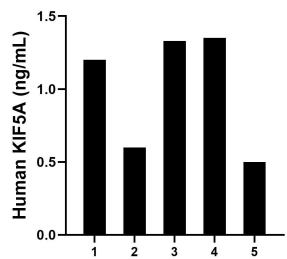
E: [proteintech@ptglab.com](mailto:proteintech@ptglab.com)  
W: [ptglab.com](http://ptglab.com)

**This product is exclusively available under Proteintech Group brand and is not available to purchase from any other manufacturer.**

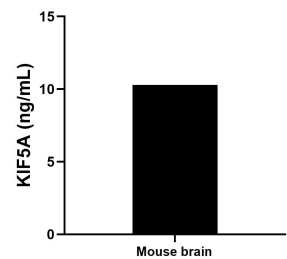
## Selected Validation Data



Sandwich ELISA standard curve of MP00967-4, Human KIF5A Recombinant Matched Antibody Pair - PBS only. 84013-3-PBS was coated to a plate as the capture antibody and incubated with serial dilutions of standard Ag15518. 84013-6-PBS was HRP conjugated as the detection antibody. Range: 0.313-20 ng/mL.



Serum of five individual healthy human donors was measured. The KIF5A concentration of detected samples was determined to be 1.00 ng/mL with a range of 0.50 - 1.35 ng/mL.



The mean KIF5A concentration was determined to be 10.30 ng/mL in mouse brain tissue extract based on a 4.60 mg/mL extract load.