

CRTAM/CD355 Recombinant Matched Antibody Pair, PBS Only

Catalog Number: **MP00989-2**

Capture Antibody Information

Catalog Number:
84068-3-PBS
Host:
Rabbit
Isotype:
IgG
Purification Method:
Protein A purification

Clone ID:
241280F11
Reactivity:
human

Conjugate:
Unconjugated
Full name:
cytotoxic and regulatory T cell
molecule
Gene ID:
56253

Detection Antibody Information

Catalog Number:
84068-1-PBS
Host:
Rabbit
Isotype:
IgG
Purification Method:
Protein A purification

Clone ID:
241280A8
Reactivity:
human
GenBank:
NM_019604.4

Conjugate:
Unconjugated
Full name:
cytotoxic and regulatory T cell
molecule
Gene ID:
56253

Applications

Tested Applications:
Cytometric bead array, Sandwich
ELISA

Range:
0.313-40 ng/mL (Cytometric Bead
Array)
19.5-1250 pg/mL (Sandwich ELISA)

Recommended Dilutions:
It is recommended that this reagent
should be titrated in each testing
system to obtain optimal results.

Product Information

MP00989-2 targets CRTAM/CD355 in immunoassays as a matched antibody pair. Validated in Cytometric bead array, Sandwich ELISA.

Capture antibody: CRTAM/CD355 Recombinant antibody, PBS Only (Capture) 84068-3-PBS (241280F11). 100 µg. Concentration 1 mg/mL.

Detection antibody: CRTAM/CD355 Recombinant antibody, PBS Only (Detector) 84068-1-PBS (241280A8). 100 µg. Concentration 1 mg/mL.

Unconjugated rabbit recombinant monoclonal antibody pair in PBS only storage buffer at a concentration of 1 mg/mL, ready for conjugation. Created using Proteintech's proprietary in-house recombinant technology. Recombinant production enables unrivalled batch-to-batch consistency, easy scale-up, and future security of supply.

Matched antibody pairs are designed for use in a variety of assays and platforms that require matched antibody pairs.

Antibody use should be optimized for each application and assay.

Storage

Storage:
Store at -80°C.
Storage buffer:
PBS only

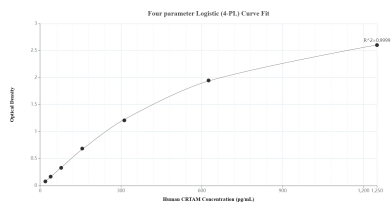
For technical support and original validation data for this product please contact:

T: 1 (888) 4PTGLAB (1-888-478-4522) (toll free
in USA), or 1(312) 455-8498 (outside USA)

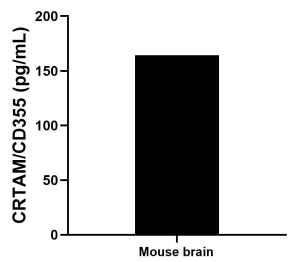
E: proteintech@ptglab.com
W: ptglab.com

**This product is exclusively available under Proteintech
Group brand and is not available to purchase from any
other manufacturer.**

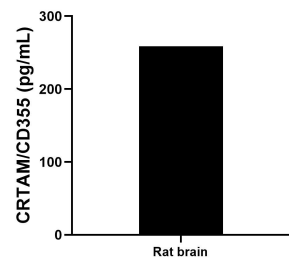
Selected Validation Data



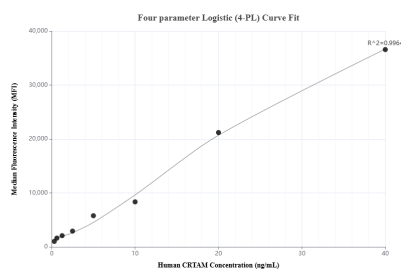
Sandwich ELISA standard curve of MP00989-2, Human CRTAM/CD355 Recombinant Matched Antibody Pair - PBS only. 84068-3-PBS was coated to a plate as the capture antibody and incubated with serial dilutions of standard Eg1541. 84068-1-PBS was HRP conjugated as the detection antibody. Range: 19.5-1250 pg/mL



The mean CRTAM/CD355 concentration was determined to be 164.4 pg/mL in mouse brain tissue extract based on a 2.0 mg/mL extract load.



The mean CRTAM/CD355 concentration was determined to be 258.9 pg/mL in rat brain tissue extract based on a 1.6 mg/mL extract load.



Cytometric bead array standard curve of MP00989-2, CRTAM/CD355 Recombinant Matched Antibody Pair, PBS Only. Capture antibody: 84068-3-PBS. Detection antibody: 84068-1-PBS. Standard: Eg1541. Range: 0.313-40 ng/mL