

# Mouse CD138/Syndecan-1 Recombinant Matched Antibody Pair, PBS Only

Catalog Number: **MP00990-2**

## Capture Antibody Information

**Catalog Number:**

84069-3-PBS

**Host:**

Rabbit

**Isotype:**

IgG

**Purification Method:**

Protein A purification

**Clone ID:**

241278E7

**Reactivity:**

mouse

**Immunogen Catalog Number:**

Eg1221

**Conjugate:**

Unconjugated

**Full name:**

syndecan 1

**Gene ID:**

20969

## Detection Antibody Information

**Catalog Number:**

84069-1-PBS

**Host:**

Rabbit

**Isotype:**

IgG

**Purification Method:**

Protein A purification

**Clone ID:**

241278C7

**Reactivity:**

mouse

**GenBank:**

NM\_011519.2

**Immunogen Catalog Number:**

Eg1221

**Conjugate:**

Unconjugated

**Full name:**

syndecan 1

**Gene ID:**

20969

## Applications

**Tested Applications:**Cytometric bead array, Sandwich  
ELISA**Range:**0.625-80 ng/mL (Cytometric Bead  
Array)  
0.625-40 ng/mL (Sandwich ELISA)**Recommended Dilutions:**It is recommended that this reagent  
should be titrated in each testing  
system to obtain optimal results.

## Product Information

MP00990-2 targets CD138/Syndecan-1 in immunoassays as a matched antibody pair. Validated in Cytometric bead array, Sandwich ELISA.

Capture antibody: Mouse CD138/Syndecan-1 Recombinant antibody, PBS Only (Capture) 84069-3-PBS (241278E7). 100 µg. Concentration 1 mg/mL.

Detection antibody: Mouse CD138/Syndecan-1 Recombinant antibody, PBS Only (Detector) 84069-1-PBS (241278C7). 100 µg. Concentration 1 mg/mL.

Unconjugated rabbit recombinant monoclonal antibody pair in PBS only storage buffer at a concentration of 1 mg/mL, ready for conjugation. Created using Proteintech's proprietary in-house recombinant technology. Recombinant production enables unrivalled batch-to-batch consistency, easy scale-up, and future security of supply.

Matched antibody pairs are designed for use in a variety of assays and platforms that require matched antibody pairs.

Antibody use should be optimized for each application and assay.

## Storage

**Storage:**

Store at -80°C.

**Storage buffer:**

PBS only

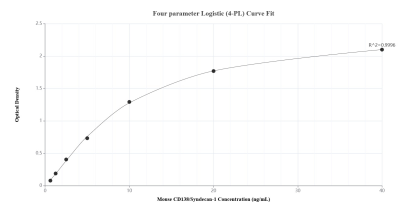
For technical support and original validation data for this product please contact:

T: 1 (888) 4PTGLAB (1-888-478-4522) (toll free  
in USA), or 1(312) 455-8498 (outside USA)

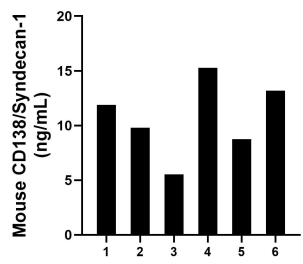
E: [proteintech@ptglab.com](mailto:proteintech@ptglab.com)  
W: [ptglab.com](http://ptglab.com)

This product is exclusively available under Proteintech Group brand and is not available to purchase from any other manufacturer.

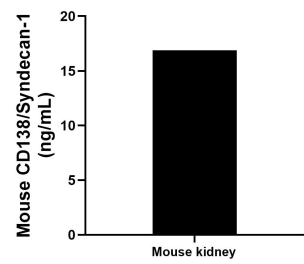
Selected Validation Data



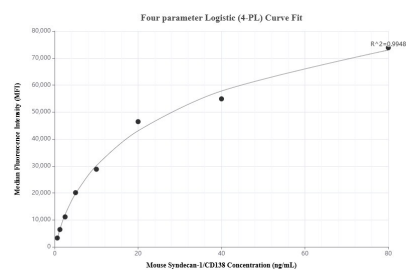
Sandwich ELISA standard curve of MP00990-2, Mouse CD138/Syndecan-1 Recombinant Matched Antibody Pair - PBS only. 84069-3-PBS was coated to a plate as the capture antibody and incubated with serial dilutions of standard Eg1221. 84069-1-PBS was HRP conjugated as the detection antibody. Range: 0.625-40 ng/mL.



Serum of six mice was measured. The CD138/Syndecan-1 concentration of detected samples was determined to be 10.74 ng/mL with a range of 5.54-15.27 ng/mL.



The mean CD138/Syndecan-1 concentration was determined to be 16.88 ng/mL in mouse kidney tissue extract based on a 3.10 mg/mL extract load.



Cytometric bead array standard curve of MP00990-2, MOUSE CD138/Syndecan-1 Recombinant Matched Antibody Pair, PBS Only. Capture antibody: 84069-3-PBS. Detection antibody: 84069-1-PBS. Standard: Eg1221. Range: 0.625-80 ng/mL.