

CD38 Recombinant Matched Antibody Pair, PBS Only

Catalog Number: **MP00991-2**

Capture Antibody Information

Catalog Number:
84070-1-PBS
Host:
Rabbit
Isotype:
IgG
Purification Method:
Protein A purification

Clone ID:
241246A12
Reactivity:
human

Conjugate:
Unconjugated
Full name:
CD38 molecule
Gene ID:
952

Detection Antibody Information

Catalog Number:
84070-2-PBS
Host:
Rabbit
Isotype:
IgG
Purification Method:
Protein A purification

Clone ID:
241246B1
Reactivity:
human
GenBank:
BC007964

Conjugate:
Unconjugated
Full name:
CD38 molecule
Gene ID:
952

Applications

Tested Applications:
Cytometric bead array, Sandwich ELISA

Range:
0.313-40 ng/mL (Cytometric Bead Array)
78.1-5000 pg/mL (Sandwich ELISA)

Recommended Dilutions:
It is recommended that this reagent should be titrated in each testing system to obtain optimal results.

Product Information

MP00991-2 targets CD38 in immunoassays as a matched antibody pair. Validated in Cytometric bead array, Sandwich ELISA.

Capture antibody: CD38 Recombinant antibody, PBS Only (Capture) 84070-1-PBS (241246A12). 100 µg. Concentration 1 mg/mL.

Detection antibody: CD38 Recombinant antibody, PBS Only (Detector) 84070-2-PBS (241246B1). 100 µg. Concentration 1 mg/mL.

Alternative CD38 matched antibody pairs: MP00991-1, MP00991-3

Unconjugated rabbit recombinant monoclonal antibody pair in PBS only storage buffer at a concentration of 1 mg/mL, ready for conjugation. Created using Proteintech's proprietary in-house recombinant technology. Recombinant production enables unrivalled batch-to-batch consistency, easy scale-up, and future security of supply.

Matched antibody pairs are designed for use in a variety of assays and platforms that require matched antibody pairs.

Antibody use should be optimized for each application and assay.

Storage

Storage:
Store at -80°C.
Storage buffer:
PBS only

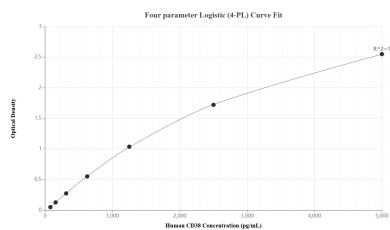
For technical support and original validation data for this product please contact:

T: 1 (888) 4PTGLAB (1-888-478-4522) (toll free in USA), or 1(312) 455-8498 (outside USA)

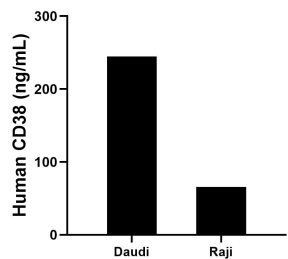
E: proteintech@ptglab.com
W: ptglab.com

This product is exclusively available under Proteintech Group brand and is not available to purchase from any other manufacturer.

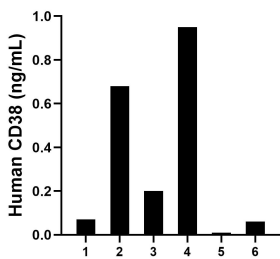
Selected Validation Data



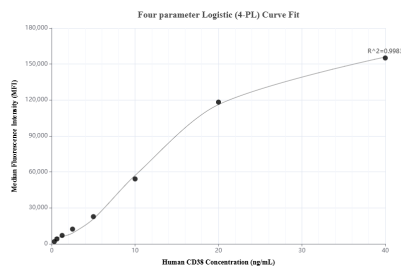
Sandwich ELISA standard curve of MP00991-2, Human CD38 Recombinant Matched Antibody Pair - PBS only. 84070-1-PBS was coated to a plate as the capture antibody and incubated with serial dilutions of standard Eg0110. 84070-2-PBS was HRP conjugated as the detection antibody. Range: 78.1-5000 pg/mL.



The mean CD38 concentration was determined to be 244.5 ng/mL in Daudi cell extract based on a 1.8 mg/mL extract load and 65.6 ng/mL in Raji cell extract based on a 1.2 mg/mL extract load.



Serum of six individual healthy human donors was measured. The CD38 concentration of detected samples was determined to be 0.3 ng/mL with a range of ND-1.0 ng/mL.



Cytometric bead array standard curve of MP00991-2, CD38 Recombinant Matched Antibody Pair, PBS Only. Capture antibody: 84070-1-PBS. Detection antibody: 84070-2-PBS. Standard: Eg0110. Range: 0.313-40 ng/mL.