

Leptin Recombinant Matched Antibody Pair, PBS Only

Catalog Number: **MP00993-1**

Capture Antibody Information

Catalog Number:
84072-2-PBS
Host:
Rabbit
Isotype:
IgG
Purification Method:
Protein A purification

Clone ID:
240720C8
Reactivity:
human

Conjugate:
Unconjugated
Full name:
leptin
Gene ID:
3952

Detection Antibody Information

Catalog Number:
84072-4-PBS
Host:
Rabbit
Isotype:
IgG
Purification Method:
Protein A purification

Clone ID:
240720G6
Reactivity:
human
GenBank:
BC060830

Conjugate:
Unconjugated
Full name:
leptin
Gene ID:
3952

Applications

Tested Applications:
Cytometric bead array, Sandwich ELISA

Range:
0.313-20 ng/mL (Cytometric Bead Array)
31.3-1000 pg/mL (Sandwich ELISA)

Recommended Dilutions:
It is recommended that this reagent should be titrated in each testing system to obtain optimal results.

Product Information

MP00993-1 targets Leptin in immunoassays as a matched antibody pair. Validated in Cytometric bead array, Sandwich ELISA.

Capture antibody: Leptin Recombinant antibody, PBS Only (Capture) 84072-2-PBS (240720C8). 100 µg. Concentration 1 mg/mL.

Detection antibody: Leptin Recombinant antibody, PBS Only (Detector) 84072-4-PBS (240720G6). 100 µg. Concentration 1 mg/mL.

Unconjugated rabbit recombinant monoclonal antibody pair in PBS only storage buffer at a concentration of 1 mg/mL, ready for conjugation. Created using Proteintech's proprietary in-house recombinant technology. Recombinant production enables unrivalled batch-to-batch consistency, easy scale-up, and future security of supply.

Matched antibody pairs are designed for use in a variety of assays and platforms that require matched antibody pairs.

Antibody use should be optimized for each application and assay.

Storage

Storage:
Store at -80°C.
Storage buffer:
PBS only

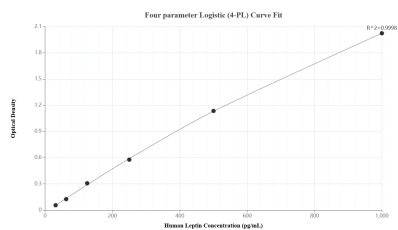
For technical support and original validation data for this product please contact:

T: 1 (888) 4PTGLAB (1-888-478-4522) (toll free in USA), or 1(312) 455-8498 (outside USA)

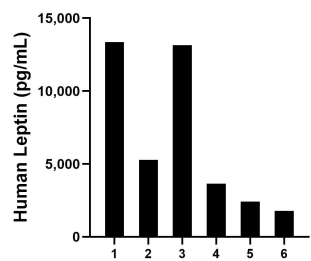
E: proteintech@ptglab.com
W: ptglab.com

This product is exclusively available under Proteintech Group brand and is not available to purchase from any other manufacturer.

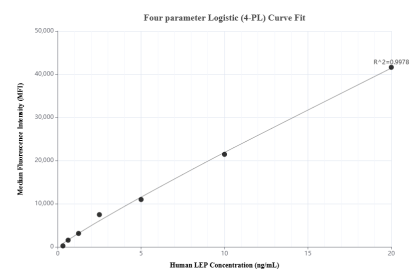
Selected Validation Data



Sandwich ELISA standard curve of MP00993-1, Human Leptin Recombinant Matched Antibody Pair - PBS only. 84072-2-PBS was coated to a plate as the capture antibody and incubated with serial dilutions of standard Eg0834. 84072-4-PBS was HRP conjugated as the detection antibody. Range: 31.3-1000 pg/mL.



Serum of six individual healthy human donors was measured. The Leptin concentration of detected samples was determined to be 6602.2 pg/mL with a range of 1788.2-13350.2 pg/mL.



Cytometric bead array standard curve of MP00993-1, LEP Recombinant Matched Antibody Pair, PBS Only. Capture antibody: 84072-2-PBS. Detection antibody: 84072-4-PBS. Standard: Eg0834. Range: 0.313-20 ng/mL.