

MMP-9 Recombinant Matched Antibody Pair, PBS Only

Catalog Number: **MP01003-2**

Capture Antibody Information

Catalog Number:
82685-18-PBS
Host:
Rabbit
Isotype:
IgG
Purification Method:
Protein A purification

Clone ID:
241224C6
Reactivity:
human

Conjugate:
Unconjugated
Full name:
matrix metalloproteinase 9
(gelatinase B, 92kDa gelatinase,
92kDa type IV collagenase)
Gene ID:
4318

Detection Antibody Information

Catalog Number:
82685-16-PBS
Host:
Rabbit
Isotype:
IgG
Purification Method:
Protein A purification

Clone ID:
241224B5
Reactivity:
human
GenBank:
BC006093

Conjugate:
Unconjugated
Full name:
matrix metalloproteinase 9
(gelatinase B, 92kDa gelatinase,
92kDa type IV collagenase)
Gene ID:
4318

Applications

Tested Applications:
Cytometric bead array, Sandwich
ELISA

Range:
0.625-80 ng/mL (Cytometric Bead
Array)
39-2500 pg/mL (Sandwich ELISA)

Recommended Dilutions:
It is recommended that this reagent
should be titrated in each testing
system to obtain optimal results.

Product Information

MP01003-2 targets MMP-9 in immunoassays as a matched antibody pair. Validated in Cytometric bead array, Sandwich ELISA.

Capture antibody: MMP-9 Recombinant antibody, PBS Only (Capture) 82685-18-PBS (241224C6). 100 µg. Concentration 1 mg/mL.

Detection antibody: MMP-9 Recombinant antibody, PBS Only (Detector) 82685-16-PBS (241224B5). 100 µg. Concentration 1 mg/mL.

Alternative MMP-9 matched antibody pairs: MP00757-1, MP01003-1, MP01003-3

Unconjugated rabbit recombinant monoclonal antibody pair in PBS only storage buffer at a concentration of 1 mg/mL, ready for conjugation. Created using Proteintech's proprietary in-house recombinant technology. Recombinant production enables unrivalled batch-to-batch consistency, easy scale-up, and future security of supply.

Matched antibody pairs are designed for use in a variety of assays and platforms that require matched antibody pairs.

Antibody use should be optimized for each application and assay.

Storage

Storage:
Store at -80°C.
Storage buffer:
PBS only

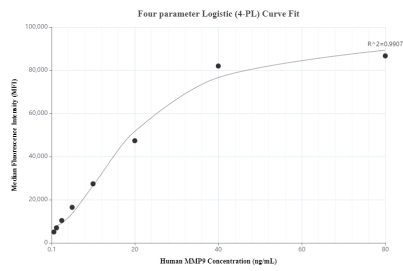
For technical support and original validation data for this product please contact:

T: 1 (888) 4PTGLAB (1-888-478-4522) (toll free
in USA), or 1(312) 455-8498 (outside USA)

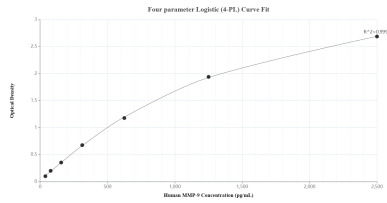
E: proteintech@ptglab.com
W: ptglab.com

This product is exclusively available under Proteintech Group brand and is not available to purchase from any other manufacturer.

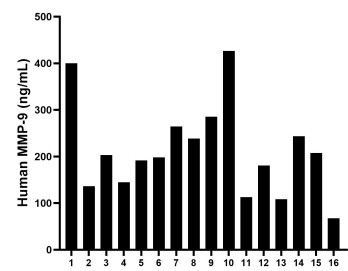
Selected Validation Data



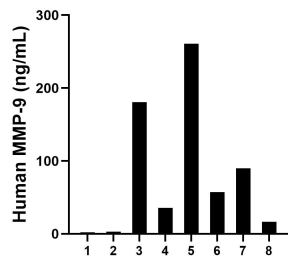
Cytometric bead array standard curve of MP01003-2, MMP-9 Recombinant Matched Antibody Pair, PBS Only. Capture antibody: 82685-18-PBS. Detection antibody: 82685-16-PBS. Standard: Eg0442. Range: 0.625-80 ng/mL



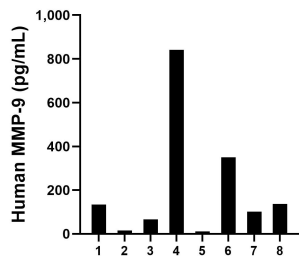
Sandwich ELISA standard curve of MP01003-2, Human MMP-9 Recombinant Matched Antibody Pair - PBS only. 82685-18-PBS was coated to a plate as the capture antibody and incubated with serial dilutions of standard Eg0442. 82685-16-PBS was HRP conjugated as the detection antibody. Range: 39-2500 pg/mL



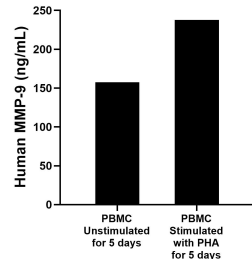
Serum of sixteen individual healthy human donors was measured. The MMP-9 concentration of detected samples was determined to be 213.0 ng/mL with a range of 67.5 - 426.4 ng/mL



Saliva of eight individual healthy human donors was measured. The MMP-9 concentration of detected samples was determined to be 80.7 ng/mL with a range of 1.9 - 260.9 ng/mL



Urine of eight individual healthy human donors was measured. The MMP-9 concentration of detected samples was determined to be 207.3 pg/mL with a range of 11.4 - 841.8 pg/mL



Human peripheral blood mononuclear cells (PBMC) were cultured unstimulated or stimulated with 10 µg/mL PHA for 5 days. The mean MMP-9 concentration was determined to be 157.3 ng/mL in unstimulated PBMC supernatant, 237.9 ng/mL in PHA stimulated PBMC supernatant.